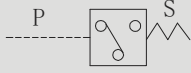


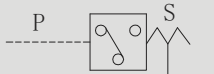
AED1型柱塞式压力继电器

AED1 SERIES PISTON PRESSURE SWITCH

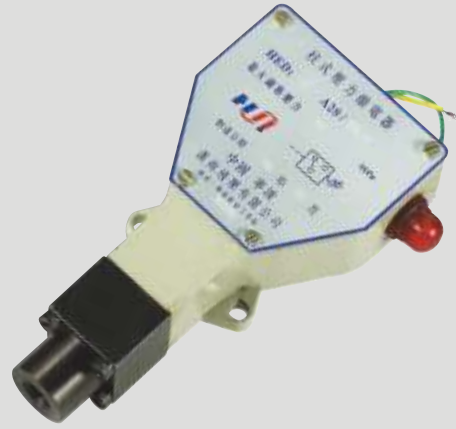
符号 SYMBOL



AED1...O



AED1...K



AED1 型柱塞式压力继电器为液—电压力继电器，用于某段油路达到调定压力时，压力继电器即发出电讯号，控制某些电气元件的通、断。实现系统的顺序动作或做安全保护。

AED1 series piston pressure switches with normally closed contacts, are used to activate an electrical contact at an adjustable pressure setting.

▶ 技术参数 Technical data

型号 Model		AED1 K	AED1 O
工作压力等级 (Mpa) Operating Pressure range(Mpa)		5,10,35	5,10,35
泄油口压力 (Mpa) Drain port pressure(Mpa)		0.2	—
开关频率 (次 / 分) Switching frequency(Time/min)		至 300 To 300	至 50 短时间至 100 To 50 Up To 100
连接尺寸 Installation dimensions		M14X1.5 G1/4	M14X1.5 G1/4
重量 (千克) Weight(KGS)	AED1OA	0.9	
	AED1KA	0.8	
阀体 (材料) 表面处理 Valve body (Material) Surface treatment		钢件 表面发黑处理 Steel Body Surface Black Oxide	
油液清洁度 /Oil cleanliness		NAS1638 9 级和 ISO4406 20/18/15 级 NAS1638 class 9 and ISO4406 class 20/18/15	

AED1 K A 20 / 100 Z L24 / 2 V *

型号
Model

K=带泄油口 O=不带泄油口
K=With drain port
O=Without drain port

系列号
Series number

压力等级 Pressure range (Mpa) 5;10;35

无 = 电缆螺纹连接

Z= 带有地线的 4 级插头连接

Z6= 带有地线的 6 级插头连接

No code=Concluit connection

Z=Plug-in connector with 4-pin ground

Z6=Plug-in connector with 6-pin ground

附加说明
For further details

无 = 丁晴橡胶

V= 氟橡胶

No code =NBR seals

V=FPM seals

无=英制

2=公制

No code=Inch

2=Metric

指示灯电压 Light voltage

L24=DC24

L110=AC110

L220=AC220