

AED4型压力继电器/ZAED4型压力继电器

AED4 SERIES PRESSURE SWITCH/ZAED4 SERIES PRESSURE SWITCH



符号 SYMBOL

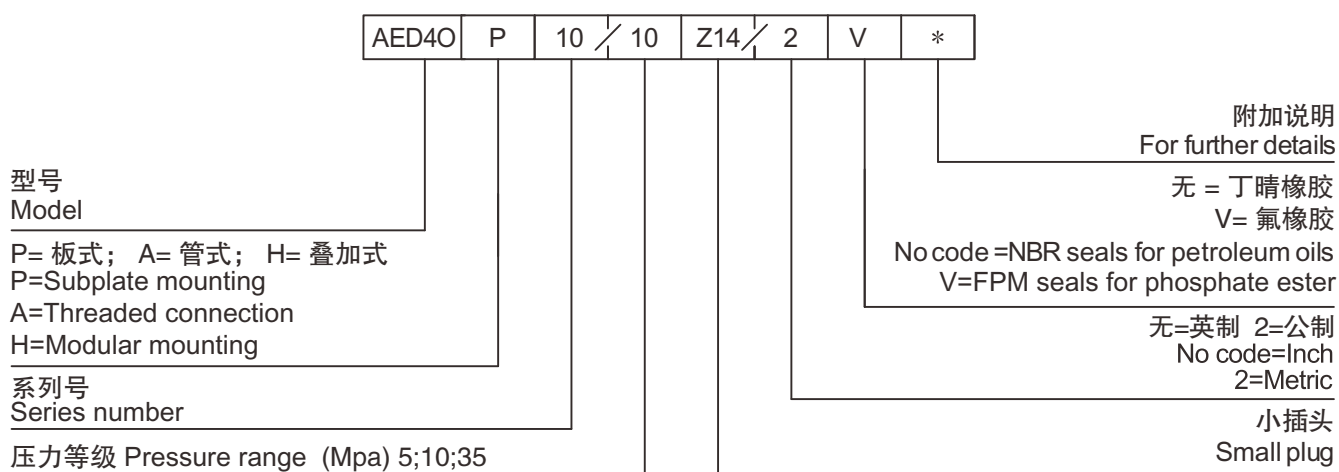


AED4 型压力继电器作用和用途同 AED1 型压力继电器相同。

The function and usage of AED4 series pressure switch are equivalent to AED1 series pressure switch.

▶ 技术参数 Technical data

| | | |
|---|--------|---|
| 工作压力 (Mpa) Operating Pressure range (Mpa) | | 5 ; 10 ; 35 |
| 开关频率 (次 / 分) Switching frequency (Time/min) | | 120 |
| 油温范围 (°C) Fluid temperature range (°C) | | -20 ~ 80 |
| 重量 (千克) Weight (KGS) | AED4OA | 0.7 |
| | AED4OP | 0.9 |
| 阀体 (材料) 表面处理 Valve body (Material) Surface treatment | | 钢件 表面发黑处理 Steel Body Surface Black Oxide |
| 油液清洁度 /Oil cleanliness | | NAS1638 9 级和 ISO4406 20/18/15 级 NAS1638 class 9 and ISO4406 class 20/18/15 |



▶ 作用与用途参照 AED1 型柱塞式压力继电器 For function and usage see the AED1 series piston pressure switch

Z AED40 A OH 6

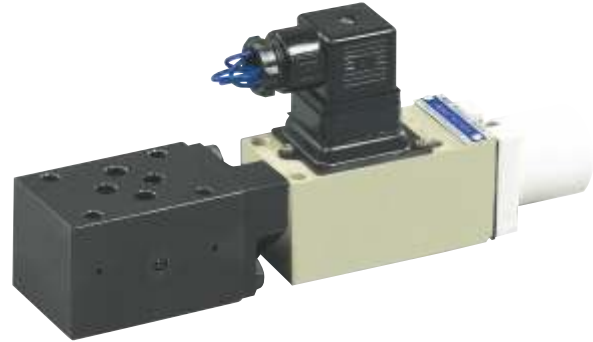
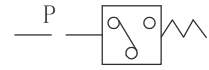
叠加式 Modular

型号 Model

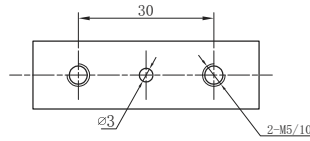
A=A 口控制 B=B 口控制 P=P 口控制
 A、B=A、B 双头控制
 A=A port pilot B=B port pilot
 P=P port pilot A.B=A.B port pilot

以下规格与 AED40 参数相同
 This specification is the same as AED40

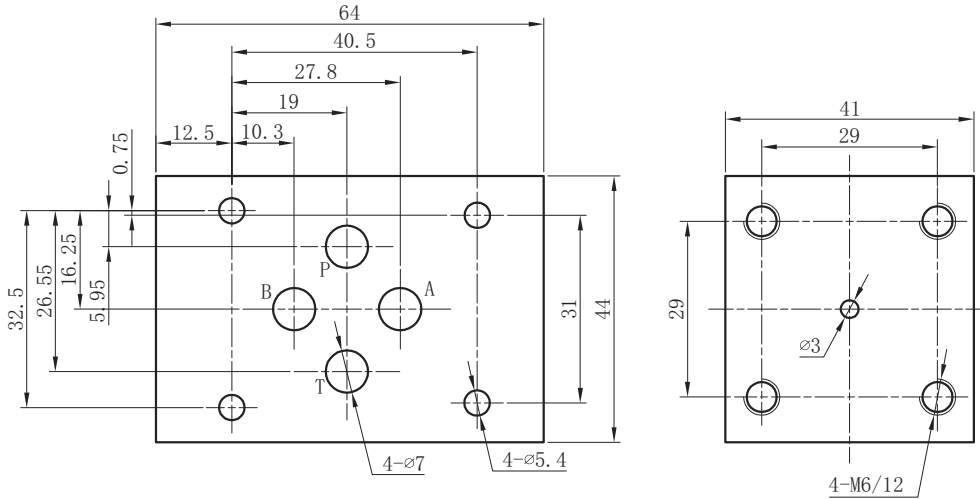
6=6 通径; 10=10 通径 6=Size 6; 10=Size 10



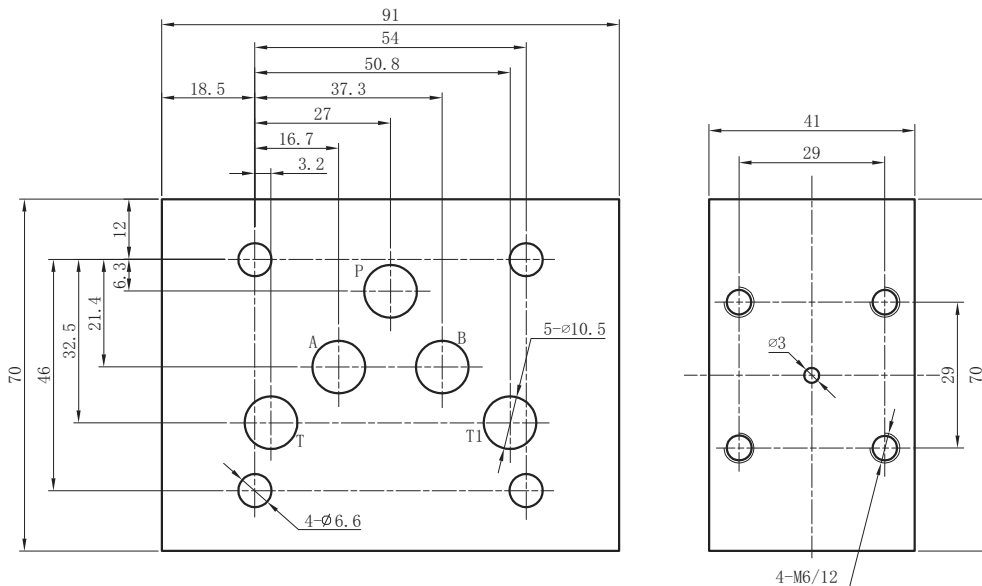
▶ OP 安装尺寸 OP Installation Dimensions



▶ ZAED 通径 6 叠加板 ZAED Size 6 subplate



▶ ZAED 通径 10 叠加板 ZAED Size 10 subplate



Catalogue 2022