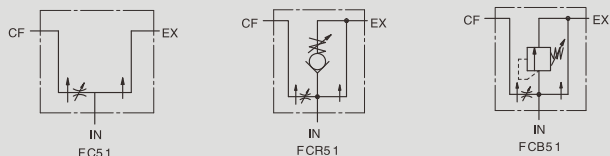


# FC 51流量阀

## FC51 FULL RANGE PRESSURE COMPENSATING VARIABLE FLOW CONTROL VALVE

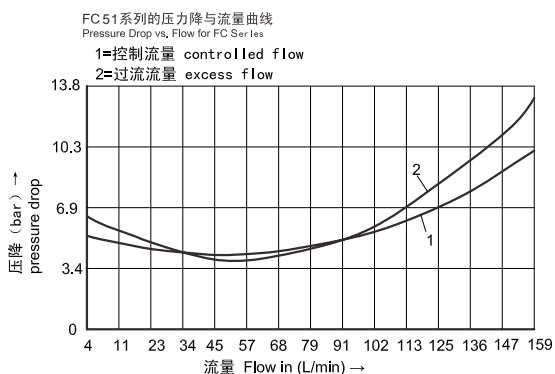
### 符号 SYMBOL



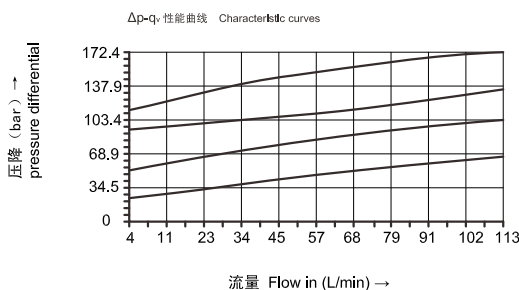
### ▶ 技术参数 Technical data

工作压力 (Mpa) Operating pressure(Mpa)	20.7
最大流量 (L/min) Max .flow rate(L/min)	114
介质温度 ( °C ) Fluid temperature( °C )	-20 ~ 70
转轴扭矩 Torque to turn side lever spool	EX 口压力为 20.7MPa 时转轴扭矩为 3.9Nm 3.9Nm with 20.7MPa on EX port
阀体 ( 材料 ) 表面处理 Valve body (Material) Surface treatment	铸件表面磷化处理 casting phosphating surface

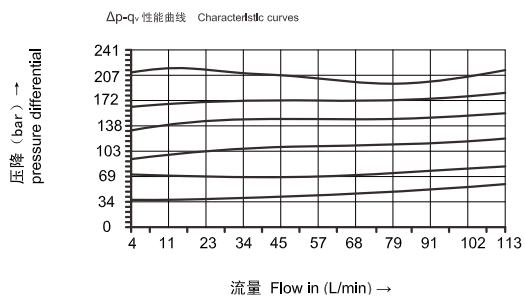
特性曲线: FC51



特性曲线: FCR51



特性曲线: FCB51



FC	*	51	G3/8
----	---	----	------

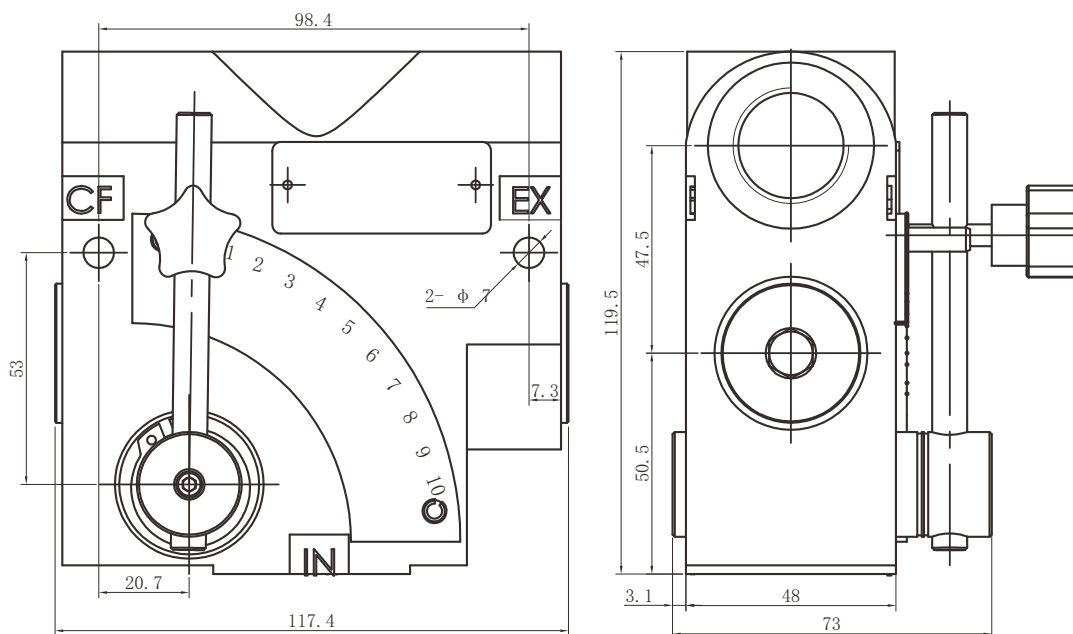
型号: Model

无 = 标准型不带溢流阀  
 R= 带有球溢流阀 (标准设定压力10.3MPa)  
 B= 带有可调节溢流阀 (标准设定压力10.3MPa)  
 Omit=No relief  
 R=Adj.ball spring relief  
 (Standard 10.3MPa setting)  
 B=Adj.high-lift spring relief  
 (Standard 10.3MPa setting)

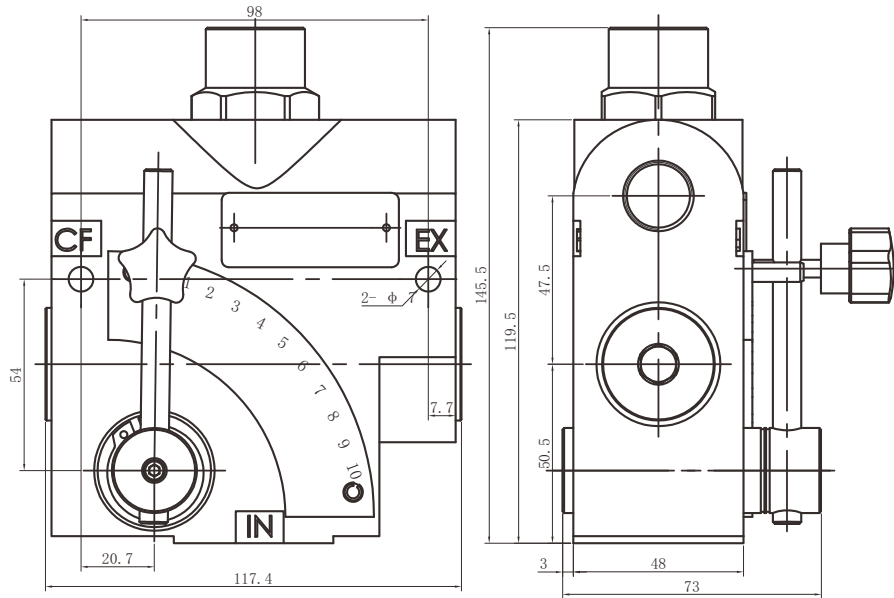
螺纹连接 Threaded Connection  
 标准优先流量范围 standard  
 G3/8 (0-30L/min)  
 G1/2 (0-61L/min)  
 G3/4 (0-114L/min)  
 NPT1/2 (0-61L/min)  
 NPT3/4 (0-114L/min)

51= 标准型  
 51-Standard flow control

FC51 安装尺寸 /Installation dimensions



▶ FCR51 安装尺寸 / Installation dimensions



▶ FCB51 安装尺寸 / Installation dimensions

