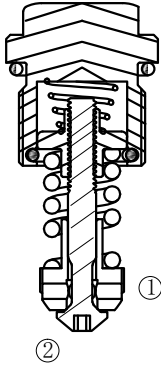


标准型 /standard

HSIRA0.M18

直动式溢流补油阀

Direct-Acting, Relief anti-cavitation Valve



OPERATION

工作原理

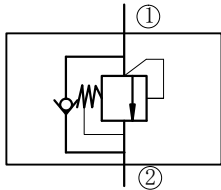
Flow is free from ① to ② until pressure increases to meet the selected valve setting, allowing relief flow through port ① to tank. This valve combines the typical function of shock relief valve (direct acting) and anticavitation function through the check valve. The direct action and the specific design allow a very fast opening and closing. Note: to obtain a good leak proof performance coin the cavity seat using a loose valve seat as acoring tool.

Torque to be applied :4.5 ± 2 Nm.

液体从①口到②口自由流动，直到压力上升到符合所选阀的设置压力，允许通过①口溢流到油箱。结合溢流阀（直动）的典型功能和单向阀的补油功能。直动式和特殊设计使阀芯快速打开和关闭。

注意：为了得到良好的防泄漏性能，使阀座结合活动阀芯作为一个密封副。要运用扭矩：4.5 ± 2Nm 调节，定值设置。

SYMBOL 机能符号

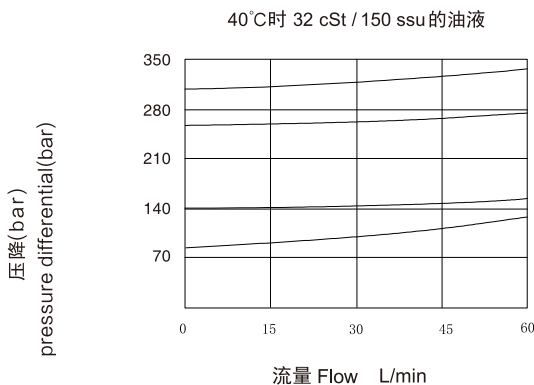


FEATURES

特性

- Hardened seat for long life 长寿命的阀
- Low Leakage 低泄漏
- Compact size 结构紧凑

PRESSURE DROP VS.FLOW 性能图



SPECIFICATIONS

技术参数

最大工作压力 Max. Operating Pressure): 350Bar

流量 Flow rate(L/min): 参见性能图 See Pressure Drop VS.Flow.

内泄漏 Internal Leakage: 10drops/min max. to 80% of nominal set point.

介质温度范围 (° C)Fluid temperature range(° C): -20 ° C to +70 ° C

过滤 Filtration:

Critical Application – ISO 18/16/13

Non-Critical Application – ISO 19/17/14

介质 Fluids : 矿物油。其它流体请咨询工厂。

Mineral-based fluids .

For other fluid compatibility,consult factory.

插孔 Cavity : VH002

阀块材料 Body Material :

6061-T6 铝，允许使用最大压力 207bar

钢材允许使用最大压力 350bar

6061-T6aluminum alloy rated to 207bar

Steel rated to 350bar

INSTALLATION DIMENSIONS
安装尺寸

Unit=Millimeters

