

HSPBBB

先导式减压阀

Pilot Operated, Pressure Reducing Valve

OPERATION

工作原理

Pilot-operated, pressure reducing valves a high primary pressure at the inlet 2 to a constant reduced pressure at 1, allowing circuits with multiple pressure requirements to be operated using a single pump.

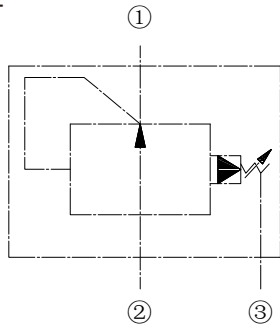
Pressure at port 3 is directly additive to the valve setting at a 1:1 ratio and should not exceed 4500 psi. Minimum settings is 75psi for all spring ranges.

先导式减压阀将2口初始高压减到1口，1口可得稳定不变的压力值，满足单泵回路提供多级工作压力要求。

油口3的压力按1:1叠加到阀的设定值上，且油口3的压力不应超过315bar 所有弹簧最小设定是5Bar。

SYMBOL

机能符号



FEATURES

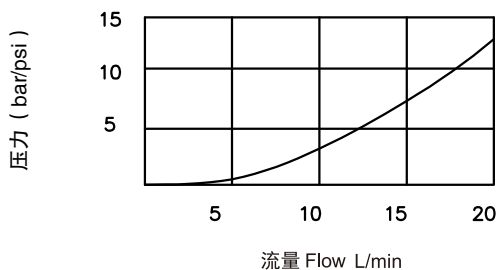
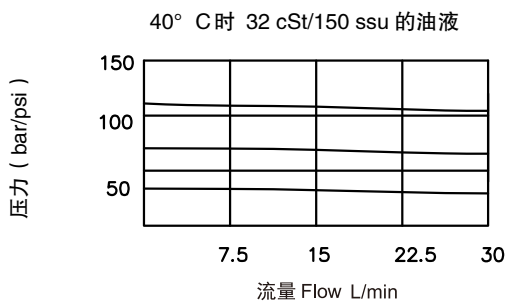
特性

- Fast response to pressure surges
- Hardened poppet and seat for long life
- Industry common cavity
- Compact size

- 迅速响应压力变化
- 长寿命的阀
- 工业通用插孔
- 紧凑结构

PRESSURE DROP VS.FLOW

性能图



SPECIFICATIONS

技术参数

最大工作压力 Max. Operating Pressure): 350Bar

流量 (Flow): See PRESSURE DROP VS.FLOW graph.

弹簧调压范围 : (Standard Spring Ranges): A 5 to 210 bar
B 5 to 150bar

介质温度 (Temperature): -30 ° C to +120 ° C

过滤 Filtration: ISO 19/17/14

介质 Fluids : 矿物油。其它流体请咨询工厂。

Mineral-based fluids.

For other fluid compatibility,consult factory 。

插孔 Cavity: T-163A

阀块材料Body Material:

6061-T6铝，允许使用最大压力207bar钢材才允许使用最大压力350bar

6061-T6 aluminum alloy rated to 207bar, Steel rated to 350bar

INSTALLATION DIMENSIONS 安装尺寸

Coil Must Be Installed With Lettering Up
安装线圈时字母必须朝上

Unit=Millimeters

