

# HDPR-08

## 直动式减压/溢流阀

Direct-Acting, Spool-Type  
Pressure Reducing / Relieving Valve

### OPERATION

#### 工作原理

In its steady state, the valve allows flow to pass bi-directionally from ② to ① with the spring chamber constantly drained at ③. On attainment of a pre-determined pressure at ①, the cartridge shifts to restrict input flow at ②, thereby regulating pressure at ①. In this mode, the valve will also relieve ① to ③ at approximately 10 bar over the reducing setting.

当在①口的压力超过弹簧设定的压力时，从②到①减压。弹簧腔内排到③口。当在①口的压力超过预设压力的10bar以上时，②口渐渐关闭，①到③口开始溢流。

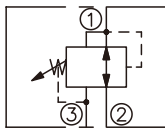
### FEATURES

#### 特性

- Adjustments cannot be backed out of the valve
- Industry common cavity
- Compact size
- 调节杆不会被旋出
- 工业通用插孔
- 紧凑结构

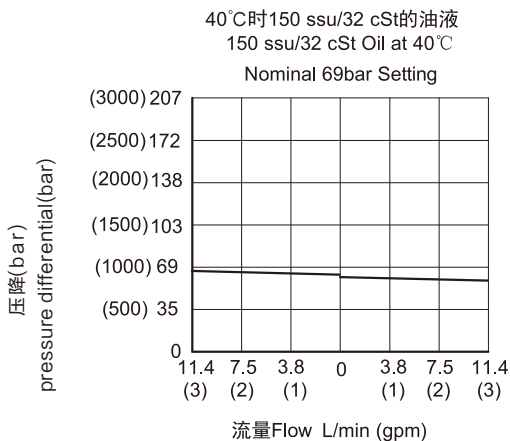
### SYMBOL

机能符号



### PRESSURE DROP VS.FLOW

#### 性能图



### SPECIFICATIONS

#### 技术参数

**最大工作压力(Max. Operating Pressure):** 207Bar

**流量(Flow):** See PRESSURE DROP VS.FLOW graph.

**内泄漏(Internal Leakage):**

from ② to ③ (内泄漏 ②到③) 82 ml/min max. at ΔP 207 bar

**弹簧调压范围(Standard Spring Ranges):** 3.5 to 20.7 bar

6.9 to 41.4 bar

20.7 to 82.8 bar

34.5 to 152 bar

**过滤(Filtration):** Critical Application – ISO 18/16/13

Non-Critical Application – ISO 19/17/14

**介质温度(Temperature):** -30 °C to +120°C

**介质(Fluids):** Mineral-based fluids

For other fluid compatibility, consult factory.

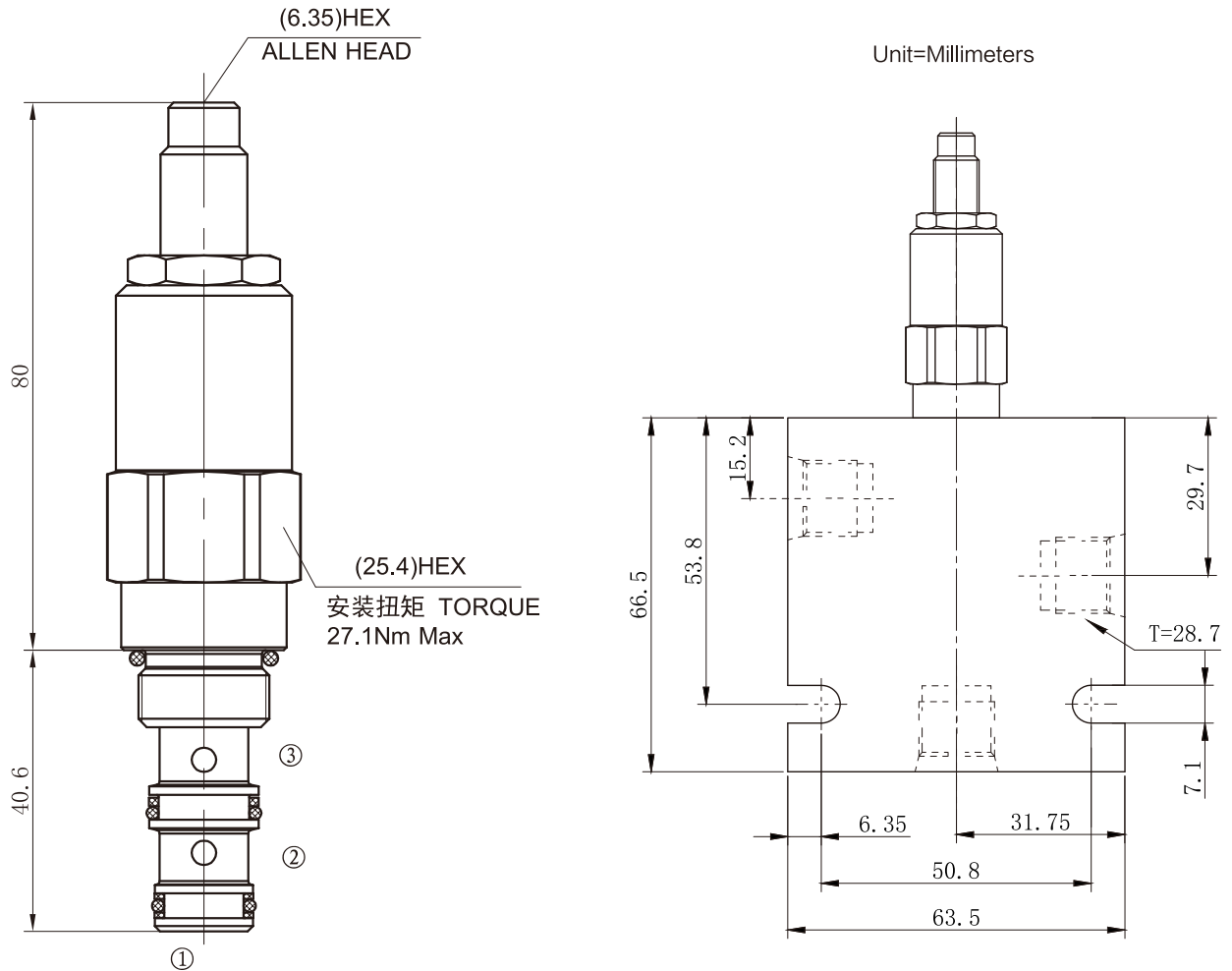
矿物油, 其它流体请咨询工厂。

**插孔 Cavity:** 08-3

**阀块材料(Body Material):** 6061-T6 aluminum alloy rated to 207bar, Steel rated to 350bar

6061-T6, 允许使用最大压力207Bar, 钢材允许最大压力350bar

INSTALLATION DIMENSIONS  
安装尺寸



HDPR — 08 — \* — \* / \* — \*

直动式减压/溢流阀  
Direct-Acting, Pressure  
Reducing/ Relieving Valve

08 规格 08 Size

弹簧调压范围 Spring Ranges  
3=3.5-20.7bar (50-300psi)  
6=6.9-41.4 bar (100-600psi)  
12=20.7-82.8 bar (300-1200psi)  
22=34.5-152 bar (500-2200psi)

调节方式 Adjustment  
省略为内六角调节杆  
(Omit for 1/4 Hex Allen head)

阀块油口 Body Porting  
4T=SAE4  
6T=SAE6  
2G=G1/4  
3G=G3/8  
Other Porting is Available  
其它螺纹油口也是可以选择的  
(Omit for Cartridge only  
省略为不带阀块)

设定压力 Setting In Bar  
例Example:0160=160bar  
Omit for standard省略则为标准