

HSEC10-42

压力补偿阀

优先型,具有静载传感的压力补偿,用于优先提供需求流量,同时将剩余流量用作辅助功能。

HSEC10-42 is a screw-in, cartridge style, priority on demand pressure compensator valve with static load sense. Intended to provide priority flow in required amount, while allowing excessive flow to be used for auxiliary functions

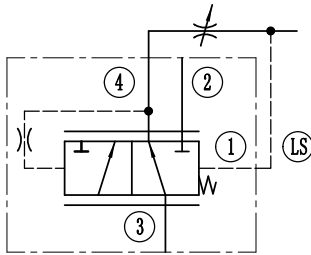
OPERATION

工作原理

With inlet flow at port③the HSEC10-42 will deliver required priority flow at port④regardless of load pressure. Excessive flow exits at port②and port①is the load sense port.All ports may be fully pressurized

油口③进油后,优先将必需的流量输送到④口,不受负载压力的影响。剩余的流入②口。①是负载传感油口。所有油口均可完全受压。

SYMBOL 机能符号



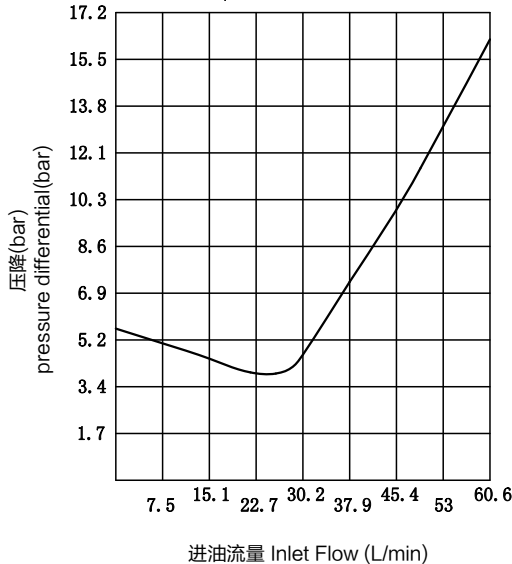
FEATURES 特性

- Hardened parts for long life. · 零件硬质处理, 耐用
- Quiet, modulated response. · 安静, 响应平稳
- Industry-common cavity. · 工业常规阀孔

PRESSURE DROP VS.FLOW

性能图

③to②, ④closed, ② not load
40°C时32cSt/150ssu的油液
150ssu/32cSt Oil at 40°C



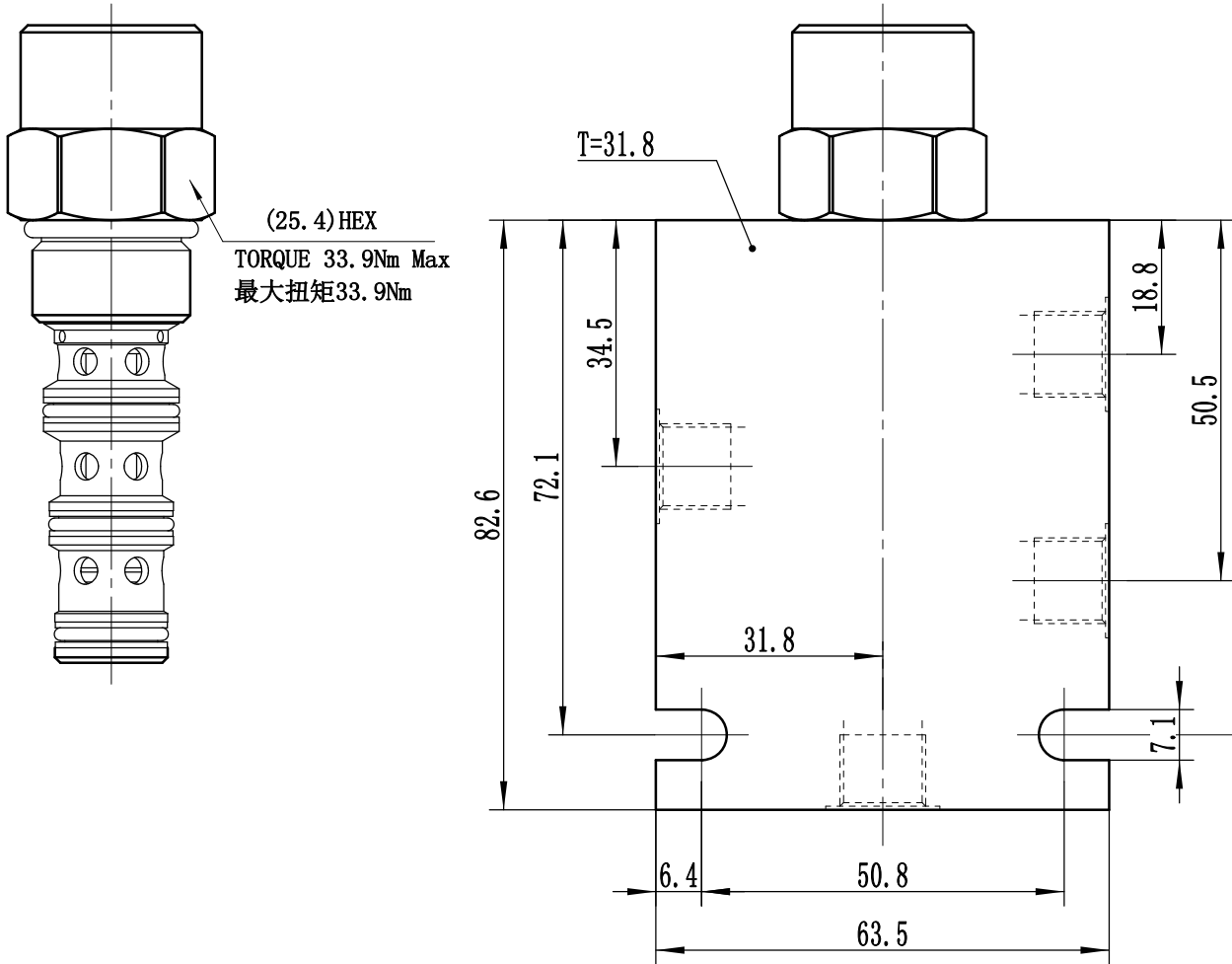
SPECIFICATIONS

技术参数

- 工作压力:** 240bar(入油口)
Working Pressure: 240bar(Pressure At Inlet)
- 最大调节流量:**
Maximum regulated flow:
补偿压力10.3bar(150psi):37.9L/min
补偿压力5.5bar(80psi):30.2L/min
- 流量Flow Rate:** 参见性能图
See Pressure Drop VS.Flow graph
- 温度范围Temperature Range:** -30°C+120°C
- 过滤Filtration:**
Critical Application-ISO 18/16/13
Non-Critical Application-ISO 19/17/14
- 介质Fluids:** 矿物油Mineral-based fluids
- 插孔Cavity:** 10-4

INSTALLATION DIMENSIONS
安装尺寸

Unit=Millimeters



(25.4) HEX
TORQUE 33.9Nm Max
最大扭矩33.9Nm

T=31.8

HSEC10-42 * * * * *

BODY PORTING 阀块油口
0=只订购插装件
6T=SAE6
8T=SAE8
2B=G1/4
3B=G3/8

补偿压力
80 5.5bar(80psi)
150 10.3bar(150psi)

密封材料
N=Nitrile Rubber Buna 丁晴橡胶(标准型)