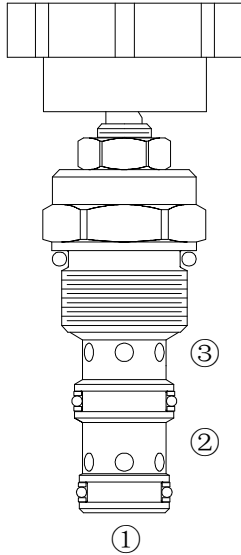


HSFR10-39

流量控制阀 压力补偿型

Regulator, Pressure-Compensated Flow Control Valve



OPERATION

工作原理

The valve maintains a constant flow rate from ③ regardless of load pressure changes in the system downstream of ③ or in the bypass leg at ② Reverse flow ③ to ① bypasses the control orifice. Bypass port ② may be fully pressurized. The regulated flow increases from closed to fully open, with counter-clockwise rotation of the knob.

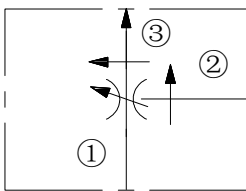
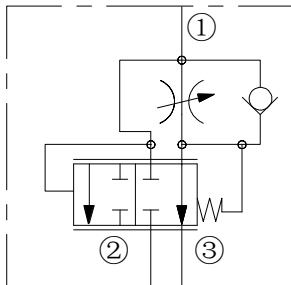
不管③口负载压力或旁路②口负载压力如何变化，从③口流出的流量维持不变。反向油液③流向①不经过控制节流孔。旁路②口可作为工作口。逆时针转动手柄，调节流量从闭合到完全打开时逐渐增加。

FEATURES

特性

- Hardened seat for long life
- Bypass port 2 may be fully pressurized
- Used for systems requiring priority
- 长寿命的阀。
- 旁路2口可加压。
- 应用于优先流量系统。

SYMBOL 机能符号



SPECIFICATIONS

技术参数

最大工作压力 Max. Operating Pressure): 240Bar

流量 Flow rate(L/min):

3-ported regulated flow:0-13lpm

3-ported regulated flow:0-12lpm

介质温度范围 (°C)Fluid temperature range(°C): -20°C to +70°C

过滤 Filtration:

Critical Application – ISO 18/16/13

Non-Critical Application – ISO 19/17/14

介质 Fluids : 矿物油。其它流体请咨询工厂。

Mineral-based fluids.

For other fluid compatibility,consult factory。

插孔 Cavity: 10-3

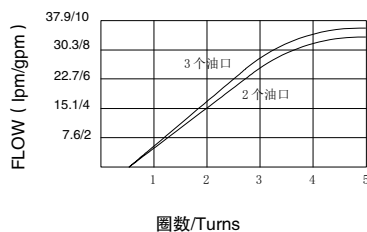
阀块材料Body Material:

6061-T6铝，允许使用最大压力207bar钢材允许使用最大压力350bar

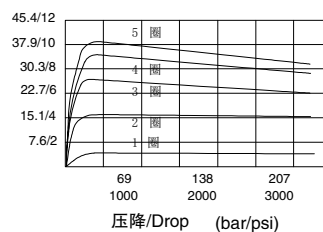
6061-T6aluminum alloy rated to 207bar Steel rated to 350bar

PRESSURE DROP VS.FLOW 性能图

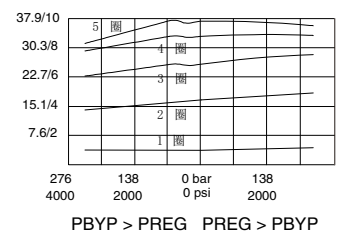
调节流量与圈数
油口③ 103 bar/1500 psi 输入压力
两个油口: 123 bar/1800 psi 进油压力
三个油口: 进油流量 38 lpm/10 gpm
40° C时 32 cSt/150 ssu 的油液



两个油口
进油 240 bar/3500 psi
时的调节流量与压力
32 cSt/150 ssu oil at 40C



三个油口
调节流量与负载
(进油38 lpm/10 gpm)
40° C时 32 cSt/150 ssu 的油液



INSTALLATION DIMENSIONS 安装尺寸

Unit=Millimeters

