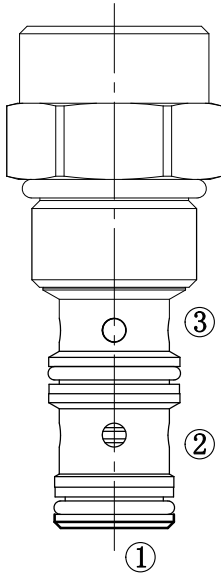


# HSFR10-30F

## 压力补偿阀



固定流量优先调节型压力补偿阀,推荐用于在需要部分泵流量分流到优先级的定量泵液压回路。

The HSFR10-30F is a screw-in, cartridge style, pressure compensated, non-adjustable hydraulic flow regulator valve. It can be used as a priority type flow regulator, delivering the pump flow to priority port③ first, then bypassing excess to port②; or a restrictive type, 2-way flow regulator when the bypass port② is blocked

### OPERATION

#### 工作原理

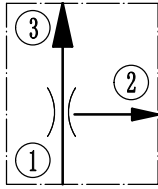
The valve maintains a constant flow rate from port③ regardless of pressure variations in the system downstream of priority port③ or in bypass leg at port②. All ports may be fully pressurized

从③口流出的流量保持不变,不受③口下游回路或旁路②的负载压力变化影响。阀芯在内固定节流孔保持6.5bar的压力差,调节①到③的流量。HSFR10-30F是优先调节型,首先将泵流量输送到③,然后将多余流量输送到旁路②。

所有油口可以充分受压。基于进油量的不同,从优先油口③出来的油液可能有差别,尤其是低温和液体粘度增加时。设置可能需要研究来决定。请联系工厂。

### SYMBOL

机能符号

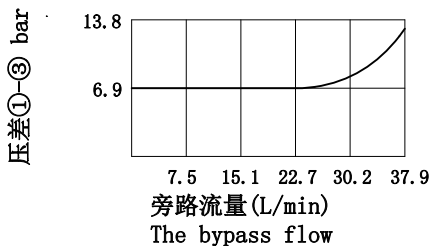
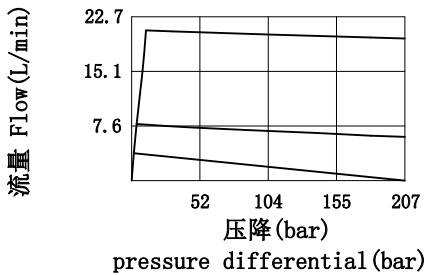


### PRESSURE DROP VS.FLOW

#### 性能图

#### 流量维持特点①-③

40°C时32cSt/150ssu的油液  
150ssu/32cSt Oil at 40°C



### FEATURES

#### 特性

- Hardened parts for long life. · 零件硬质处理, 耐用
- Quiet, modulated response. · 安静, 响应平稳
- Industry-common cavity. · 工业常规阀孔

### SPECIFICATIONS

#### 技术参数

最大调节流量:22.7L/min,最大输入:37.8L/min,

最高压力: 241bar

当旁路流量超过23L/min时,入口①的压力开始上升超过补偿压力。

标准补偿器复位弹簧 : 6.5bar

流量Flow Rate:参见性能图

See Pressure Drop VS.Flow graph

温度范围Temperature Range:-30°C+120°C

过滤Filtration:

Critical Application-ISO 18/16/13

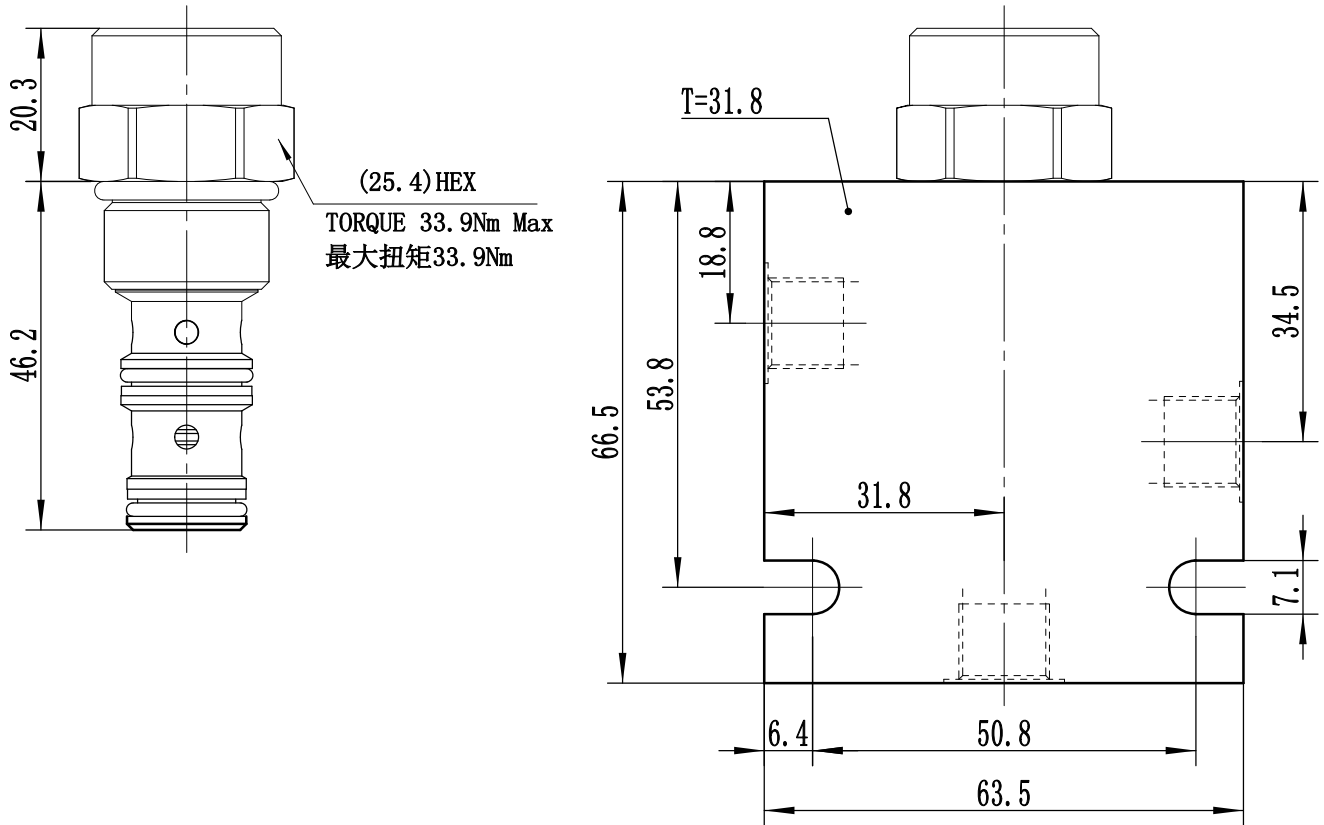
Non-Critical Application-ISO 19/17/14

介质Fluids:矿物油Mineral-based fluids

插孔Cavity:10-3

INSTALLATION DIMENSIONS  
安装尺寸

Unit=Millimeters



HSFR10-30F	*	*	*	*	*
------------	---	---	---	---	---

BODY PORTING 阀块油口  
 0=只订购插装件  
 6T=SAE6  
 8T=SAE8  
 2B=G1/4  
 3B=G3/8

优先流量 范围: 0.38-22.7L/Min  
 1.8L 1.8L/Min  
 5.0L 5L/Min

密封材料  
 N=Nitrile Rubber Buna 丁晴橡胶(标准型)