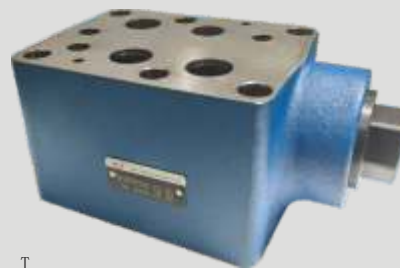
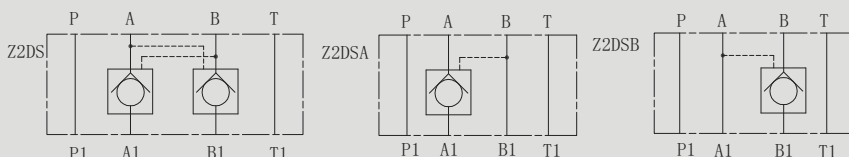


Z2DS22型叠加式单向阀

Z2DS22 SERIES PILOT CONTROLLED MODULAR CHECK VALVES



符号 SYMBOL

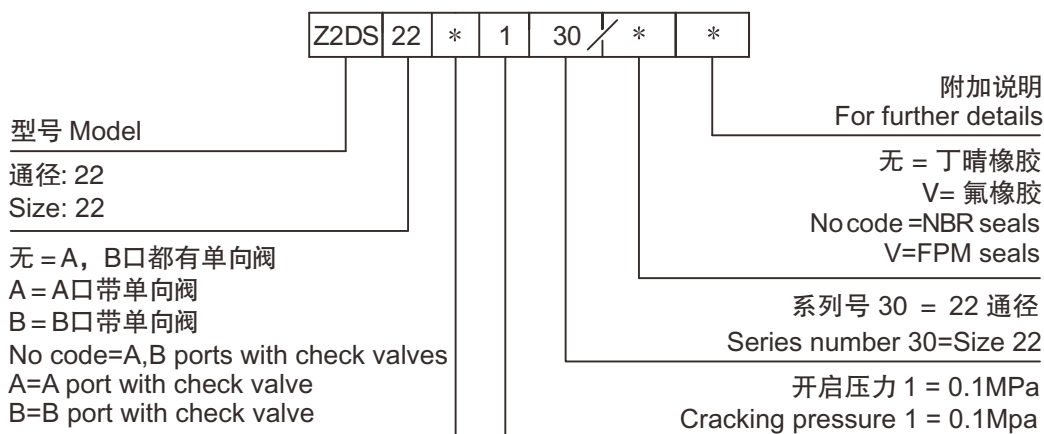


Z2DS22 型单向阀是叠加式液控单向阀，它可用于关闭一个或两个工作油口且无泄漏持续工作时间长，稳定性好。

Z2DS22 series are pilot operated style sandwich valves. These valves used to close one or two actuator ports.

▶ 技术参数 Technical data

通径 Size	22
工作压力 (MPa) Operating pressure (MPa)	31.5
流量 (L/min) Flow rate (L/min)	300
介质温度范围 (°C) Fluid temperature range (°C)	-30 ~ 80 °C
重量 (千克) Weight (KGS)	12.8
阀体 (材料) 表面处理 Valve body (Material) Surface treatment	铸件 表面磷化处理 casting phosphating surface
油液清洁度 /Oil cleanliness	NAS1638 9 级和 ISO4406 20/18/15 级 NAS1638 class 9 and ISO4406 class 20/18/15



▶ Z2DS22 外形尺寸和安装 Z2DS22 External Dimensions and Fittings

