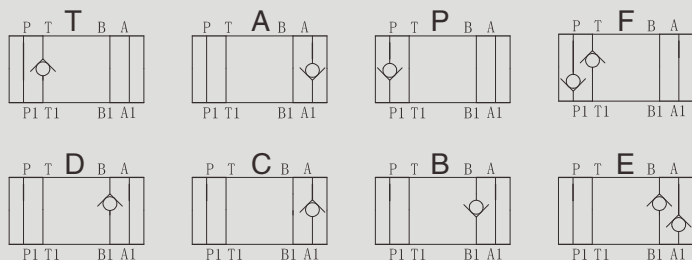


Z1DS10型叠加式单向阀

Z1DS10 SERIES MODULAR CHECK VALVES

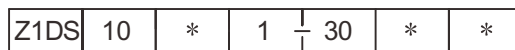
符号 SYMBOL



Z1DS 型单向阀是叠加式结构的单向阀。 Z1DS series are direct operated check valves.

▶ 技术参数 Technical data

通径 Size	10
工作压力 (Mpa) Operating pressure(Mpa)	31.5
流量 (L/min) Flow rate(L/min)	100
油温温度 (°C) Oil temperature range (°C)	-20 ~ 70
重量 (千克) Weight(KGS)	2.3
阀体 (材料) 表面处理 Valve body (Material) Surface treatment	铸件 表面磷化处理 casting phosphating surface
油液清洁度 /Oil cleanliness	NAS1638 9 级和 ISO4406 20/18/15 级 NAS1638 class 9 and ISO4406 class 20/18/15



型号 Model

通径: 10 Size: 10

油口液流形式见符号图
See the symbol for flow type

开启压力 Cracking pressure

1= 0.05MPa

2= 0.3MPa

3= 0.5MPa

附加说明
For further details

无 = 丁腈橡胶 V = 氟橡胶
No code=NBR seals
V=FPM seals

系列号
Series number

▶ Z1DS10 外形尺寸和安装 Z1DS10 Overall and Fittings

