

# HSRDDA

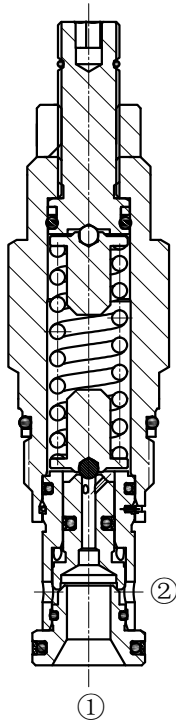
## 溢流阀

Direct-Acting, Poppet-Type,  
Relief Valve

### OPERATION

#### 工作原理

The valve prevents flow from ① to ② until the set crack pressure at ① is achieved. The poppet then unseats allowing flow from ① to ② protecting the circuit from over pressurization. 当在①口的压力超过调压弹簧设定的压力时，阀芯打开，①到②通，防止系统过压，这种阀对压力反应灵敏。

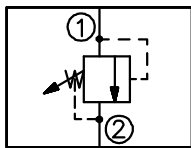


### FEATURES

#### 特性

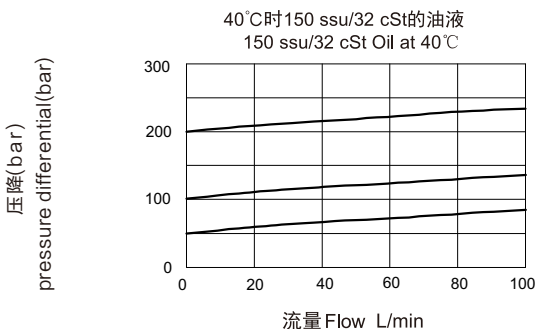
- Fast response to pressure surges
- Hardened seat for long life
- Industry common cavity
- Compact size
- 迅速响应压力变化
- 阀座经硬质处理，耐用
- 工业通用插孔
- 紧凑结构

### SYMBOL 机能符号



### PRESSURE DROP VS.FLOW

#### 性能图



### SPECIFICATIONS

#### 技术参数

**最大工作压力 (Max. Operating Pressure):** 350Bar

**流量(Flow):** See PRESSURE DROP VS.FLOW graph.

**内泄漏 (Internal Leakage):** 10 drops/min max. to 80% of nominal setting

**闭合压力 (Reseat Pressure):** 90% of crack pressure 开启压力  
(crack pressure at 0.95 lpm)

**弹簧调压范围:** (Standard Spring Ranges): 35 to 210 bar  
55 to 315 bar

**过滤 (Filtration):** ISO 19/17/14

**介质温度 (Temperature):** -30 °C to +120 °C

**介质 (Fluids):** Mineral-based fluids.

For other fluid compatibility, consult factory.

矿物油，其它流体请咨询工厂

**插孔 (Cavity):** HSRDDA : SUNT-10A;

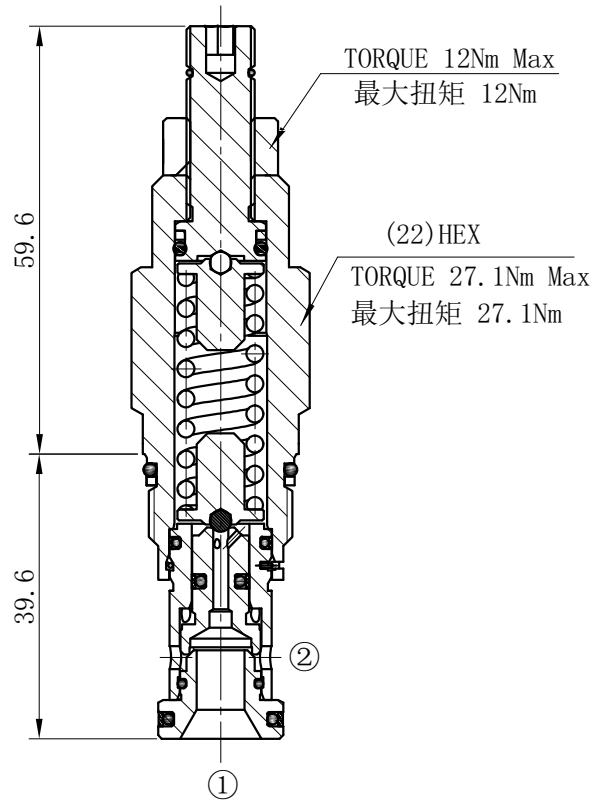
HSRDFA : SUNT-3A

**阀块材料 (Body Material):** 6061-T6 aluminum alloy rated at 207bar,  
Steel rated at 350bar

6061-T6, 允许使用最大压力 207Bar, 钢材允许最大压力 350bar

INSTALLATION DIMENSIONS  
安装尺寸

Unit=Millimeters



HSRDDA

