

# HSRVSO.S10

## 直动式溢流阀

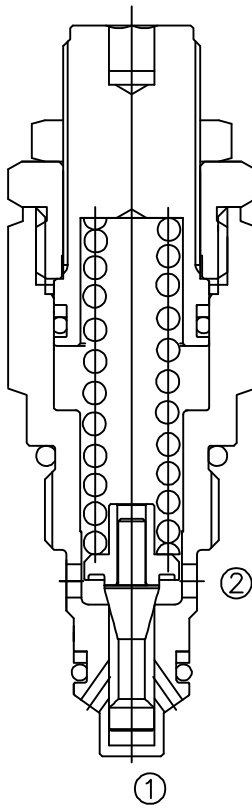
Adjustable, Direct-Acting  
Cartridge Relief Valve

### OPERATION

#### 工作原理

The valve prevents flow from ① to ② until the set crack pressure at ① is achieved. The poppet then unseats allowing flow from ① to ② protecting the circuit from over pressurization.

当在①口的压力超过调压弹簧设定的压力时，阀芯打开，①到②通，防止系统过压。



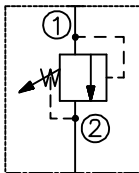
### FEATURES

#### 特性

|  |          |
|--|----------|
| Fast response to pressure surges       | 迅速响应压力变化 |
| Hardened poppet and seat for long life | 长寿命的阀    |
| Industry common cavity                 | 工业通用插孔   |
| Compact size                           | 紧凑结构     |
| Quiet response                         | 无噪音响应    |

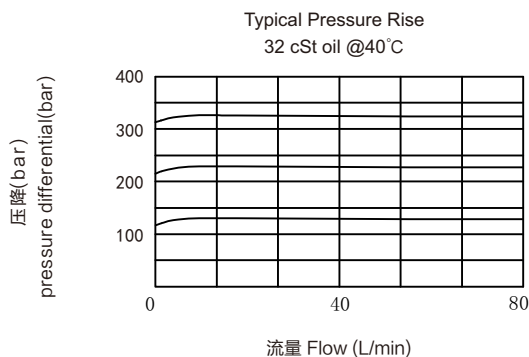
### SYMBOL

#### 机能符号



### PRESSURE DROP VS.FLOW

#### 性能图



### SPECIFICATIONS

#### 技术参数

**最大工作压力** (Max. Operating Pressure): 350Bar

**流量** (Flow): See PRESSURE DROP VS.FLOW graph.

**内 漏 砖** (Internal Leakage): 5drops/min. MAX.to 80% of nominal setting

Reseat Pressure :Nominal 80% of crack pressure

(crack(set)pressure at 5lpm/1.25gpm)

**弹簧调压范围**(Standard Spring Ranges): W 50 to 350 bar Preset=200Bar  
 N 5 to 110 bar Preset=60Bar  
 B 10 to 180 bar Preset=110Bar  
 G 10 to 240bar Preset=120Bar

**温度** (Temperature): -30 °C to +120 °C

**介质** (Fluids):Mineral-based fluids

For other fluid compatibility, consult factory.

矿物油，其它流体请咨询工厂

**插孔** (Cavity): 10-2

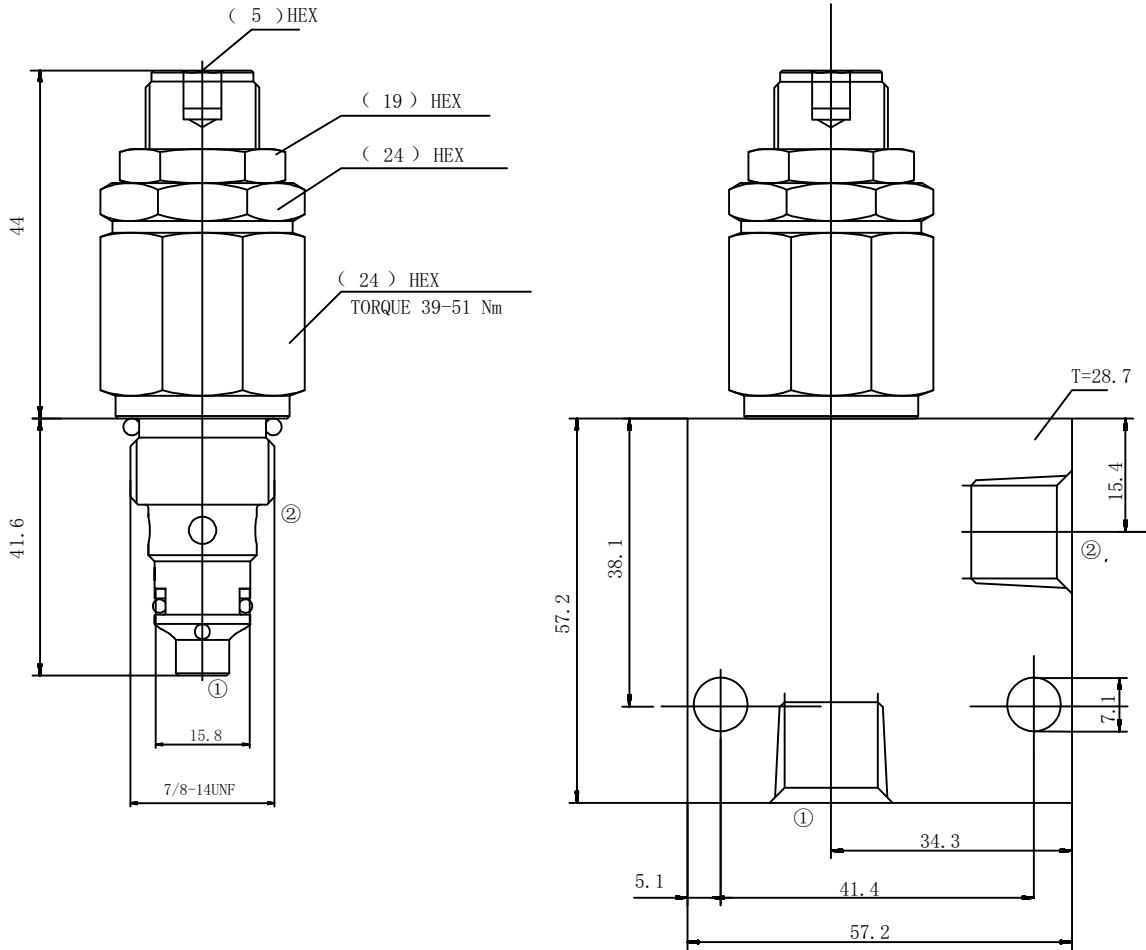
**阀块材料** (Body Material):

钢材允许使用最大压力 350bar

Steel rated to 350bar

INSTALLATION DIMENSIONS  
安装尺寸

Unit=Millimeters



HSRVSO S10 0 \* \*\* \*

直动式溢流阀  
Cartridge Relief Valve

S10=7/8-14UNF with 15.8 nose size

弹簧调压范围:SPRING RANGE

(Standard Spring Ranges):

W 50 to 350 bar Preset=200Bar

N 5 to 110 bar Preset=60Bar

B 10 to 180 bar Preset=110Bar

G 10 to 240bar Preset=120Bar

BODY PORTING 阀块油口

6T=SAE6

8T=SAE8

3G=G3/8

4G=G1/2

Other Porting is Available

其它螺纹油口也是可以选择的

(Omit for Cartridge only

省略为不带阀块)

设定压力: Pressure setting in ( bar)

00=无要求: NO specific setting required