

# HRV-08B

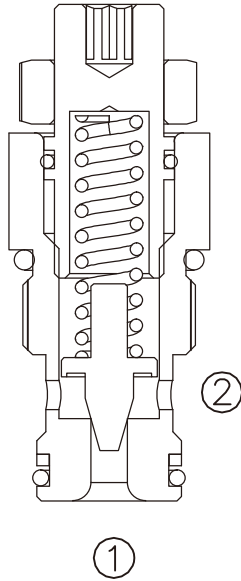
## 直动式溢流阀

Direct-Acting, Poppet-Type,  
Cartridge Relief Valve

### OPERATION

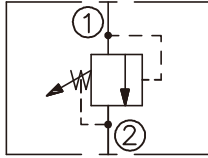
#### 工作原理

The valve prevents flow from ① to ② until the set crack pressure at ① is achieved. The poppet then unseats allowing flow from ① to ② protecting the circuit from over pressurization.  
当在①口的压力超过调压弹簧设定的压力时，阀芯打开，①到②通，防止系统过压。



### SYMBOL

#### 机能符号



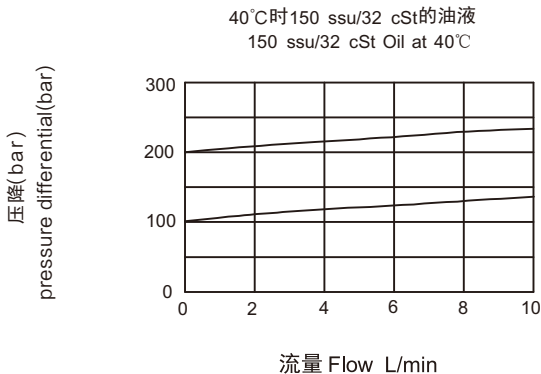
### FEATURES

#### 特性

- Fast response to pressure surges
- Hardened seat for long life
- Industry common cavity
- Compact size
- 迅速响应压力变化
- 阀座经硬质处理，耐用
- 工业通用插孔
- 紧凑结构

### PRESSURE DROP VS.FLOW

#### 性能图



### SPECIFICATIONS

#### 技术参数

- 最大工作压力 (Max. Operating Pressure):** 350Bar
- 流量(Flow):** See PRESSURE DROP VS.FLOW graph.
- 内泄漏 (Internal Leakage):** 5 drops/min max. to 80% of normal setting
- 闭合压力 (Reseat Pressure):** 80% of crack pressure 开启压力 (crack pressure at 0.95 lpm)
- 弹簧调压范围:** (Standard Spring Ranges): 0 to 350 bar
- 过滤 (Filtration):** ISO 19/17/14
- 介质温度 (Temperature):** -30 °C to +120 °C
- 介质 (Fluids):** Mineral-based fluids.  
For other fluid compatibility, consult factory.  
矿物油 . 其它流体请咨询工厂
- 插孔 (Cavity):** 08-2B, see the page 125, 参见 125 页
- 阀块材料 (Body Material):** 6061-T6 aluminum alloy rated at 207bar, Steel rated at 350bar  
6061-T6, 允许使用最大压力 207Bar, 钢材允许最大压力 350bar

INSTALLATION DIMENSIONS  
安装尺寸

Unit=Millimeters

