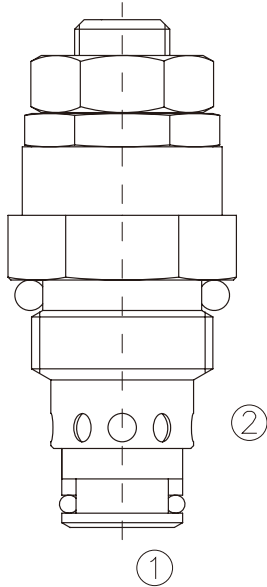


HRV-08

直动式溢流阀

Direct-Acting, Poppet-Type, Cartridge Relief Valve



OPERATION

工作原理

The valve prevents flow from ① to ② until the set crack pressure at ① is achieved. The poppet then unseats allowing flow from ① to ② protecting the circuit from over pressurization.

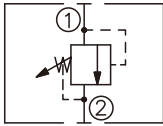
当在①口的压力超过调压弹簧设定的压力时，阀芯打开，①到②通，防止系统过压。

FEATURES

特性

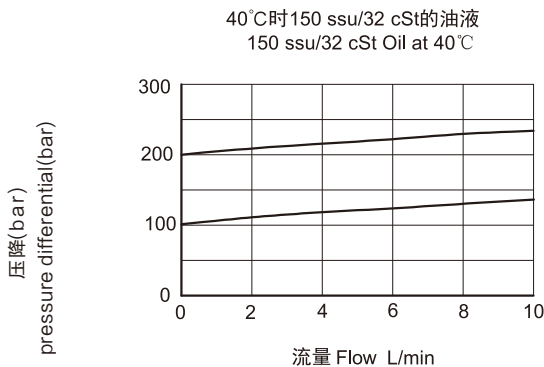
- Fast response to pressure surges
- Hardened seat for long life
- Industry common cavity
- Compact size
- 迅速响应压力变化
- 阀座经硬质处理，耐用
- 工业通用插孔
- 紧凑结构

SYMBOL 机能符号



PRESSURE DROP VS.FLOW

性能图



SPECIFICATIONS

技术参数

最大工作压力(Max. Operating Pressure): 250Bar

流量(Flow): See PRESSURE DROP VS.FLOW graph.

内泄漏(Internal Leakage): 5 drops/min max. to 80% of nominal setting

闭合压力(Reseat Pressure): 80% of crack pressure 开启压力
(crack pressure at 0.95 lpm)

弹簧调压范围(Standard Spring Ranges): 40 to 250 bar

过滤(Filtration): ISO 19/17/14

介质温度(Temperature): -30 °C to +120°C

介质(Fluids): Mineral-based fluids.

For other fluid compatibility, consult factory.

矿物油,其它流体请咨询工厂。

插孔 Cavity: 08-2, See page 123 08-2, 参见 123 页

阀块材料(Body Material): 6061-T6 aluminum alloy rated at 207bar,

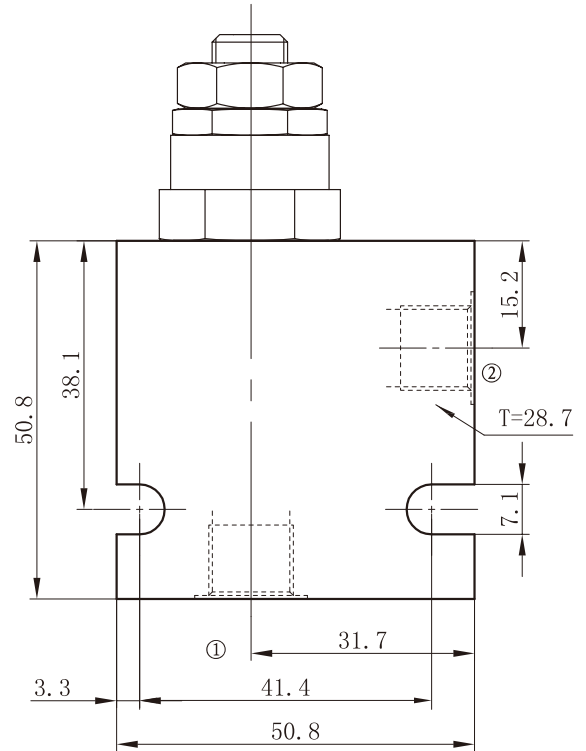
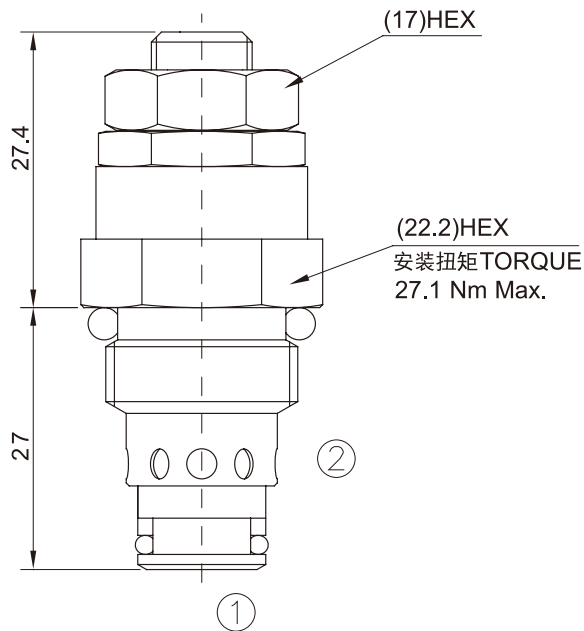
Steel rated at 350bar

6061-T6, 允许使用最大压力207Bar,

钢材允许最大压力350bar

INSTALLATION DIMENSIONS 安装尺寸

Unit=Millimeters



HRV - 08 - * / * - *

直动式溢流阀
Direct-Acting,
Relief Valve

08 规格 08 Size

弹簧调压范围 Spring Ranges
23=40-160 bar (580-2300psi)
36=80-250 bar (1150-3600psi)

阀块油口 Body Porting
4T=SAE4
6T=SAE6
2G=G1/4
3G=G3/8
Other Porting is Available
其它螺纹油口也是可以选择的
(Omit for Cartridge only
省略为不带阀块)

设定压力 Setting In Bar
例Example:0160=160bar
Omit for standard 省略则为标准