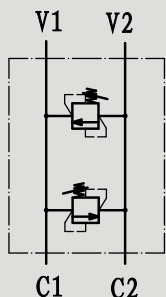


NHSDI-OMS型双向溢流阀(法兰式)

NHSDI-OMS FLANGEABLE ON SAUER-DANFOSS ORBITAL MOTORS OMS SERIES

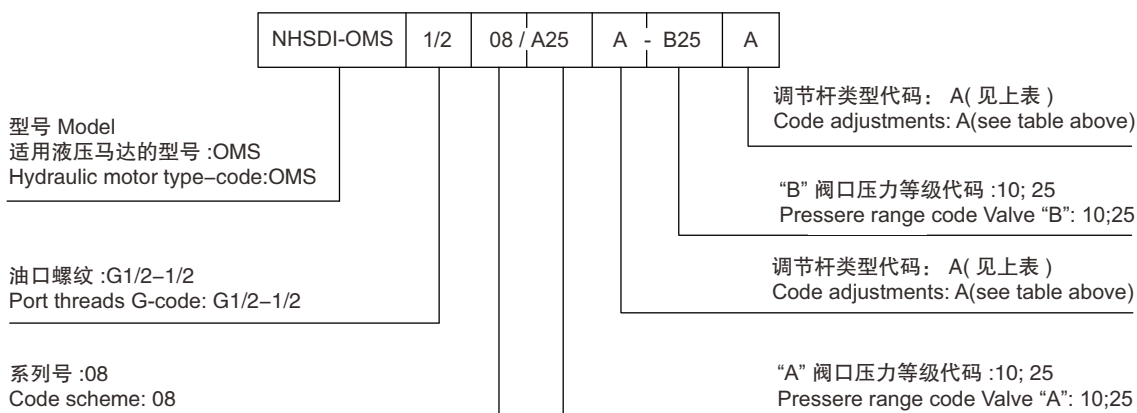
符号 SYMBOL



▶ 技术参数 Technical data

型号 Model	NHSDI-OMS	代码 code	调节方式 Adjustments	压力范围 Pressure range	
最大工作压力 (Mpa) / Operating pressure(Mpa)	25	A	无泄漏的内六角螺钉 Leakproof hex socket screw 	压力调节范围 Adj. Pressure range	
最大流量 (L/min) / Max.flow rate (L/min)	85			代码 code	bar
阀体 (材料) 表面处理 Valve body (Material) Surface treatment	(钢体) 表面镀锌处理 (steel body) surface clear zinc plating			10	10-100
油液清洁度 Oil cleanliness	NAS 1638 9 级和 ISO4406 20/18/15 级	25		20-250	

▶ 订单选型 Ordering Details



外形尺寸和安装 External Dimensions and Fittings

