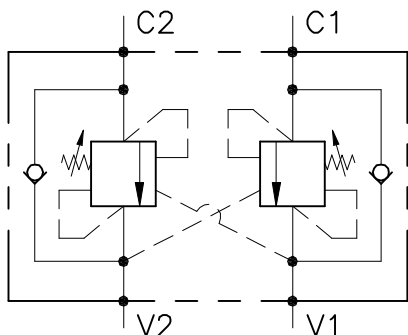


HSN01.026 型双作用平衡阀(法兰式)

DOUBLE COUNTERBALANCE VALVE WITH FLANGEABLE BODY



性能

PERFORMANCE

公称口径
 最小/最大流量
 最大峰值压力
 最大设定压力
 标准先导比
 室温
 油温
 推荐过滤
 重量

DN 8/10
 1/60 l/min - 0.26/15.9 GPM
 350 bar - 5075 PSI
 350 bar - 5075 PSI
 4.25: 1
 -30°C + 50°C
 -30°C + 80°C
 30 micron

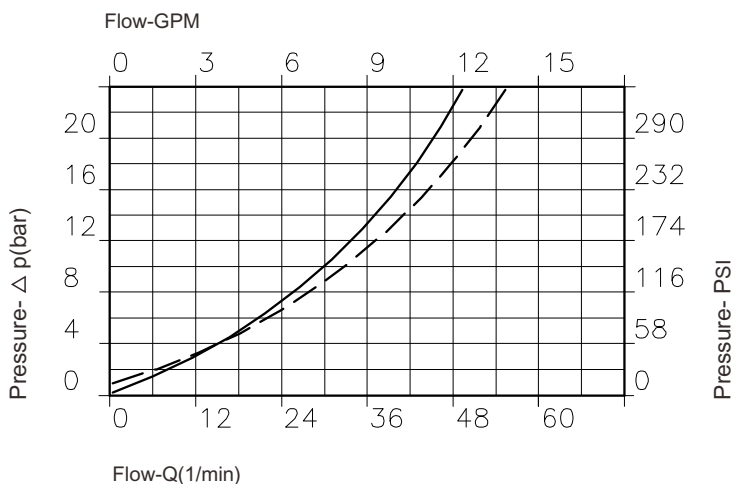
Rated size
 Min/max flow-rate
 Max peak pressure
 Max setting pressure
 Standard pilot ratio
 Room temperature
 Oil temperature
 Recommended filtration
 Weight

NOTE:

阀设定压力至少为负载压力的1.3倍
 Valve should be set at 1.3 times load induced pressure.

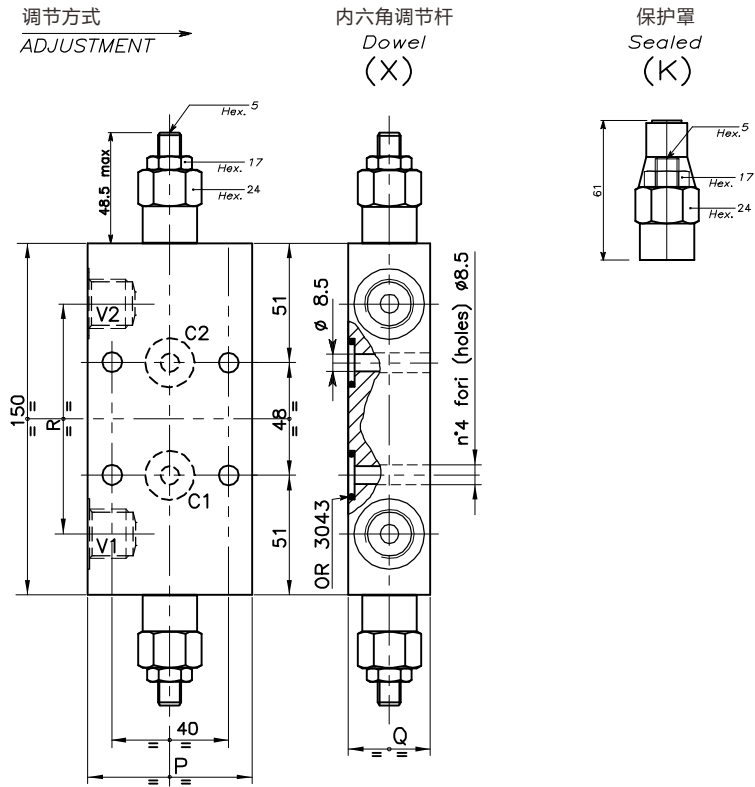
EXAMPLE:

最大工作压力
 Max working pressure:
 350 bar / 1.3 = 270 bar



V2 - - - C2 C2 - - - V2

油液粘度46cSt 50°C
 Oil viscosity 46 cSt at 50°C



尺寸 DIMENSIONS

调压范围 Setting range	P	Q	R	油口规格 Port size V2-V1 GAS (BSPP)	最大流量 Max flow-rate l/min - GPM
026	55	29.5	109.5	3/8"	40-10
028	65	34.5	112	1/2"	60-15

订货型号 HOW TO ORDER

HSN01. 026 . 0 X 0 . A

调压范围 Setting range
026
028
调压范围 Setting range 60+350 bar

标准设定压力
Std. bar setting
(Q=5 l/1')
250 bar

每周调压值
Pressure rise -
turn of screw
(90)

先导比 Pilot ratios	调节方式 Adjustment	阀体 Body
O 4.25: 1	X 内六角调节杆 Dowel K 保护罩 Sealed	A 钢件镀锌 Zinc plated steel