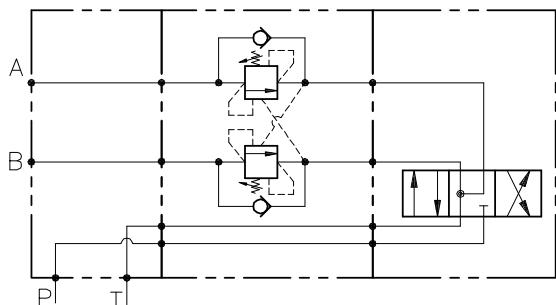


HSN01.226 双作用平衡阀(CETOP3)  
DOUBLE COUNTERBALANCE WITH SANDWICH INSTALLATION (CETOP3)



性能

公称通径	DN 6
最小/最大流量	1/50 l/min - 0.26/12.5 GPM
最大峰值压力	350 bar - 5075 PSI
最大设定压力	350 bar - 5075 PSI
标准先导比例	4.25: 1
室温	-30°C + 50°C
油温	-30°C + 80°C
推荐过滤	30 micron
重量	

PERFORMANCE

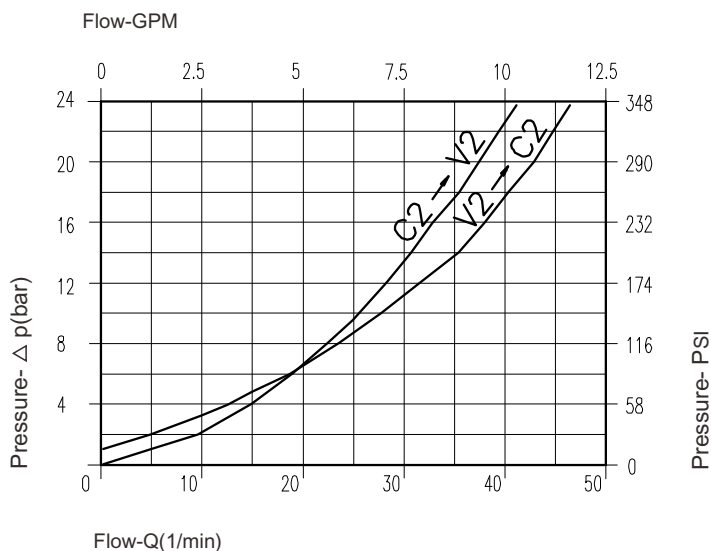
Rated size
Min/max flow-rate
Max peak pressure
Max setting pressure
Standard pilot ratio
Room temperature
Oil temperature
Recommended filtration
Weight

NOTE:

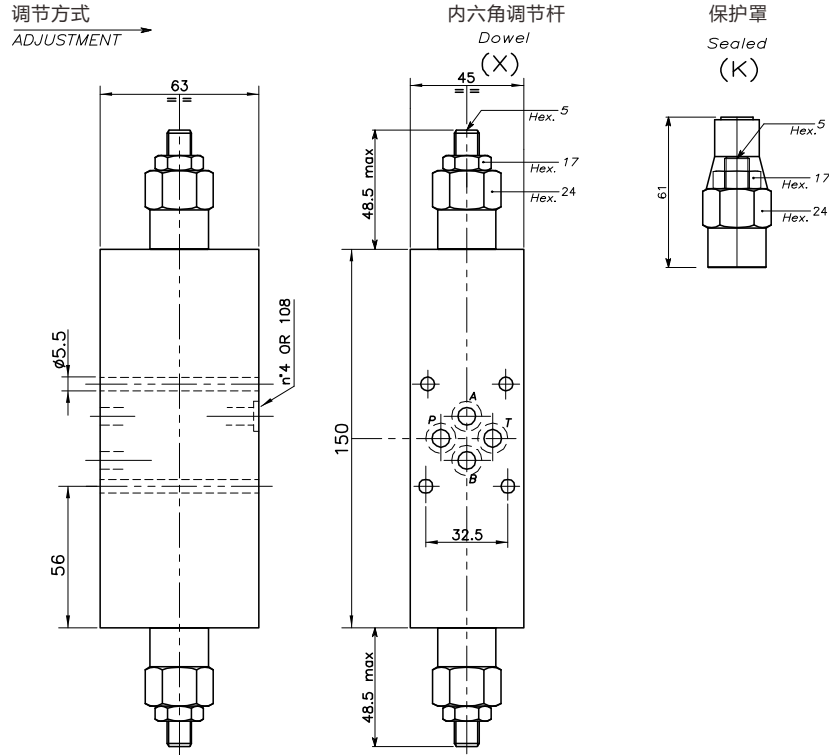
阀设定压力至少为负载压力的1.3倍  
Valve should be set at 1.3 times load induced pressure.

ESEMPIO/EXAMPLE:

最大工作压力  
Max working pressure:  
350 bar / 1.3 = 270 bar



油液粘度46cSt 50°C  
Oil viscosity 46 cSt at 50°C



## 尺寸 DIMENSIONS

调压范围 Setting range	安装标准 Flange type	最大流量 Max flow-rate l/min - GPM
226	CETOP 03	50-12.5

## 订货型号 HOW TO ORDER

# HSN01. 226 . 0 X 0 . A

调压范围 Setting range 226		先导比 Pilot ratios 0   4.25: 1	调节方式 Adjustment X   内六角调节杆 Dowel K   保护罩 Sealed	阀体 Body A   钢件镀锌 Zinc plated steel
调压范围 Setting range 60÷350 bar				
标准设定压力 Std. bar setting Q=5 l/1' 250 bar	每周调压值 Pressure rise - turn of screw (90)			