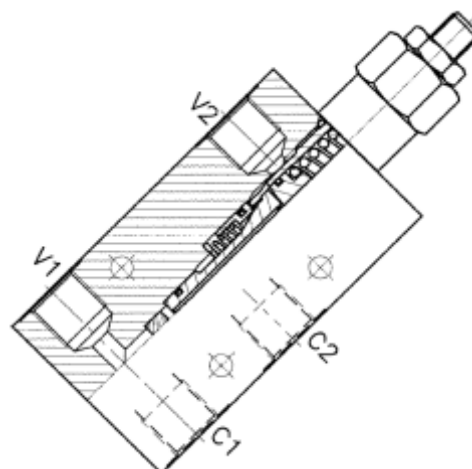
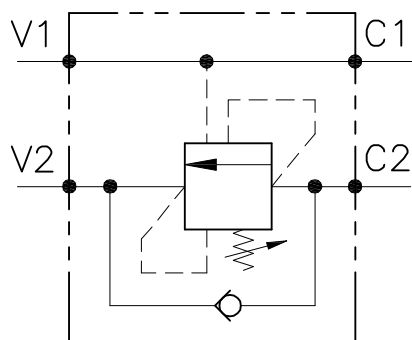


HSN01.327 型管式单作用平衡阀
SINGLE COUNTERBALANCE VALVE WITH IN LINE BODY



性能

PERFORMANCE

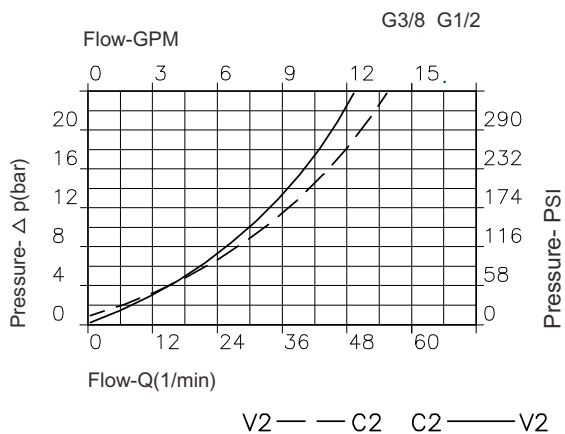
公称通径	DN 8/10	Rated size
最小/最大流量	1/60 l/min - 0.26/15.9 GPM	Min/max flow-rate
最大峰值压力	450 bar - 6525 PSI	Max peak pressure
最大设定压力	350 bar - 5075 PSI	Max setting pressure
标准先导比	4.25: 1	Standard pilot ratio
室温	-30°C + 50°C	Room temperature
油温	-30°C + 80°C	Oil temperature
推荐过滤	30 micron	Recommended filtration
拧紧扭矩		Tightening torque
重量		Weight

NOTE:

阀设定压力至少为负载压力的1.3倍
Valve should be set at 1.3 times load induced pressure.

EXAMPLE:

最大工作压力
Max working pressure:
350 bar / 1.3 = 270 bar

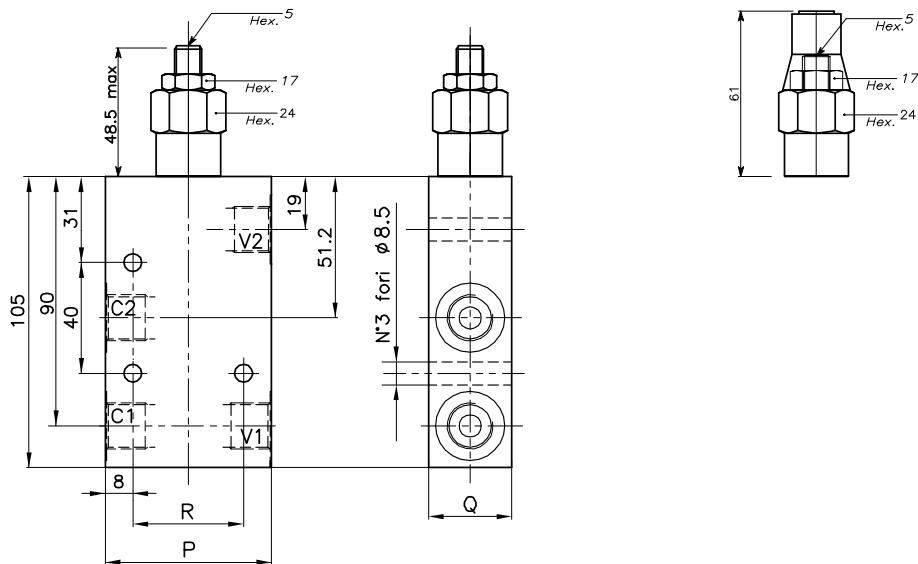


油液粘度46cSt 50°C
Oil viscosity 46 cSt at 50°C

调节方式
ADJUSTMENT →

内六角调节杆
Dowel
(X)

保护罩
Sealed
(K)



尺寸 DIMENSIONS

调压范围 Setting range	P	Q	R	油口规格 Port size V2-C2 V1-C1 GAS (BSPP)	公称通径 Rated size DN	最大流量 Max flow-rate l/min - GPM
327	60	30	40	3/8"	8	40-10
329	70	35	50	1/2"	10	60-15

订货型号 HOW TO ORDER

HSN01. 327 . 0 X 0 . A

调压范围 Setting range	327
调压范围 Setting range 60+350 bar	329
标准设定压力 Std. bar setting (Q=5 l/1') 250 bar	每周调压值 Pressure rise - turn of screw - (90)

先导比 Pilot ratios	调节方式 Adjustment	阀体 Body
O 4.25: 1	X 内六角调节杆 Dowel K 保护罩 Sealed	A 钢件镀锌 Zinc plated steel