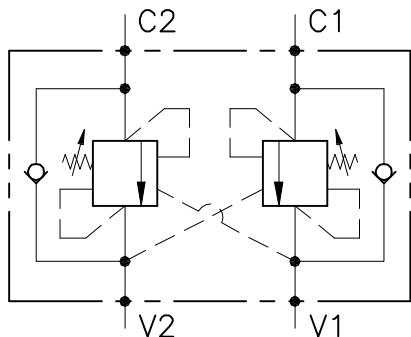


HSN01.080 型管式双作用平衡阀

DOUBLE COUNTERBALANCE VALVE WITH IN LINE BODY



性能

公称通径
 最小/最大流量
 最大峰值压力
 最大设定压力
 标准先导比
 室温
 油温
 推荐过滤
 拧紧扭矩
 重量

DN 6/8/10
 1/60 l/min - 0.26/15.9 GPM
 350 bar - 5075 PSI
 350 bar - 5075 PSI
 4.25: 1
 -30°C + 50°C
 -30°C + 80°C
 30 micron

PERFORMANCE

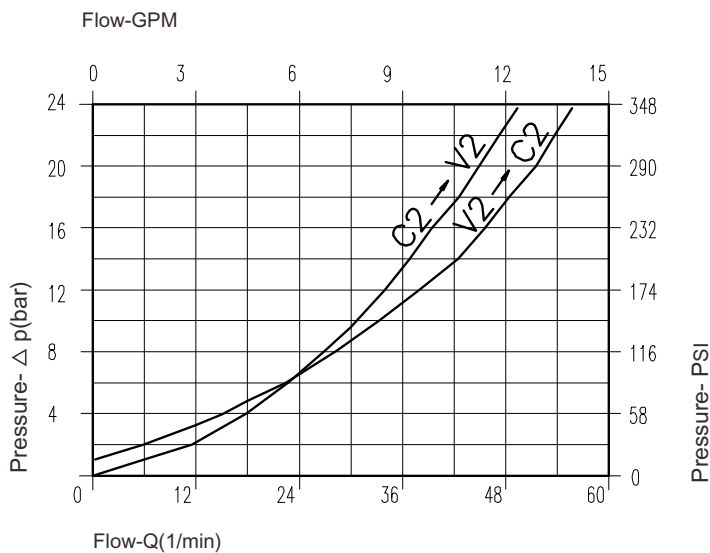
Rated size
 Min/max flow-rate
 Max peak pressure
 Max setting pressure
 Standard pilot ratio
 Room temperature
 Oil temperature
 Recommended filtration
 Tightening torque
 Weight

NOTE:

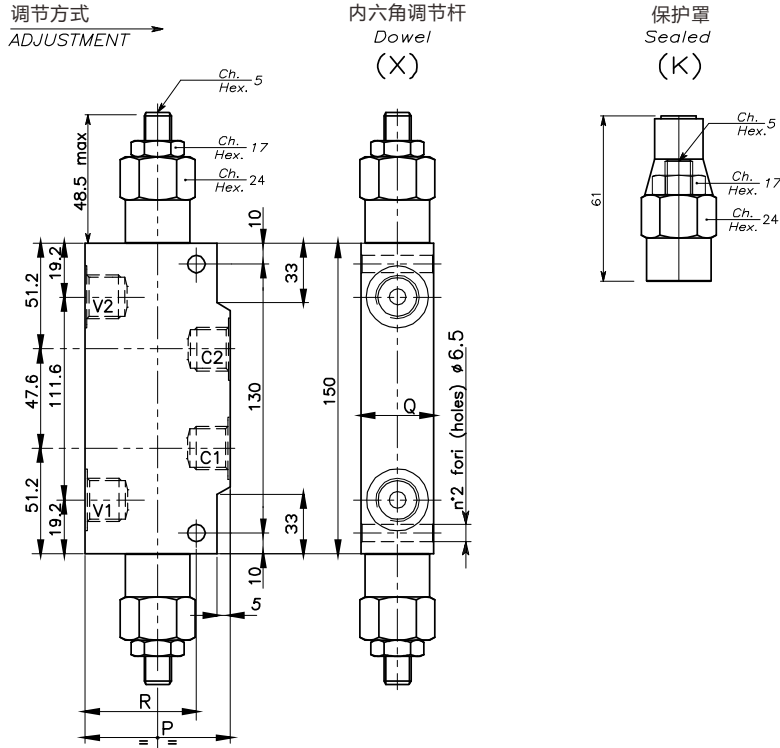
阀设定压力至少为负载压力的1.3倍
 Valve should be set at 1.3 times load induced pressure.

ESEMPIO/EXAMPLE:

最大工作压力
 Max working pressure:
 350 bar / 1.3 = 270 bar



油液粘度46cSt 50°C
 Oil viscosity 46 cSt at 50°C



尺寸 DIMENSIONS

调压范围 Setting range		P	Q	R	油口规格 Port size V2-C2 V1-C1 GAS (BSPP)	公称通径 Rated size DN	最大流量 Max flow-rate l/min - GPM
081	080	60	30	47,5	3/8"	8	40-10
083	082	70	35	55	1/2"	10	60-15

订货型号 HOW TO ORDER

HSN01. 080 . 0 X 0 . A

调压范围 Setting range			
081		080	
083		082	
调压范围 Setting range 30÷220 bar		调压范围 Setting range 60÷350 bar	
标准设定压力 Std. bar setting (Q=5 l/1')	每周调压值 Pressure rise - turn of screw (50)	标准设定压力 Std. bar setting (Q=5 l/1')	每周调压值 Pressure rise - turn of screw (90)
180 bar		250 bar	

先导比 Pilot ratios	调节方式 Adjustment	阀体 Body
O 4.25: 1	X 内六角调节杆 Dowel K 保护罩 Sealed	A 钢件镀锌 Zinc plated steel