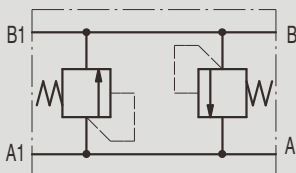


# NHDR 双向溢流阀


## NHDR DUAL CROSS RELIEF VALVE

### 符号 SYMBOL



### ▶ 技术参数 Technical data

型号	NHDR-3/8	NHDR-1/2
最大流量 (L/min) Max .flow rate(L/min)	45	60
工作压力 (Mpa) Operating pressure(Mpa)	25	
油液清洁度	MAS1638 9级和 ISO4406 20/18/15 级	
阀体 (材料) 表面处理 Valve body (Material) Surface treatment	( 钢体 ) 表面镀锌处理 ( Steel body ) Surface clear zinc plating	

代码 Code	调节方式 Adjustments
A	无泄漏的内六角螺钉 Leakproof hex socket screw 

压力范围 Pressure Range	
代码 Code	压力调节范围 Adj. Pressure Range
	bar
10	10-100
25	20-250

NHDR 3/8 08 / A10 A B25 A

型号 Model

油口螺纹: G1/2-1/2  
G3/8-3/8  
Port threads G-code  
G1/2-1/2  
G3/8-3/8

系列号: 08  
Code scheme: 08

调节杆类型代码: A  
(见上表)  
Code adjustments:A  
(see table above)

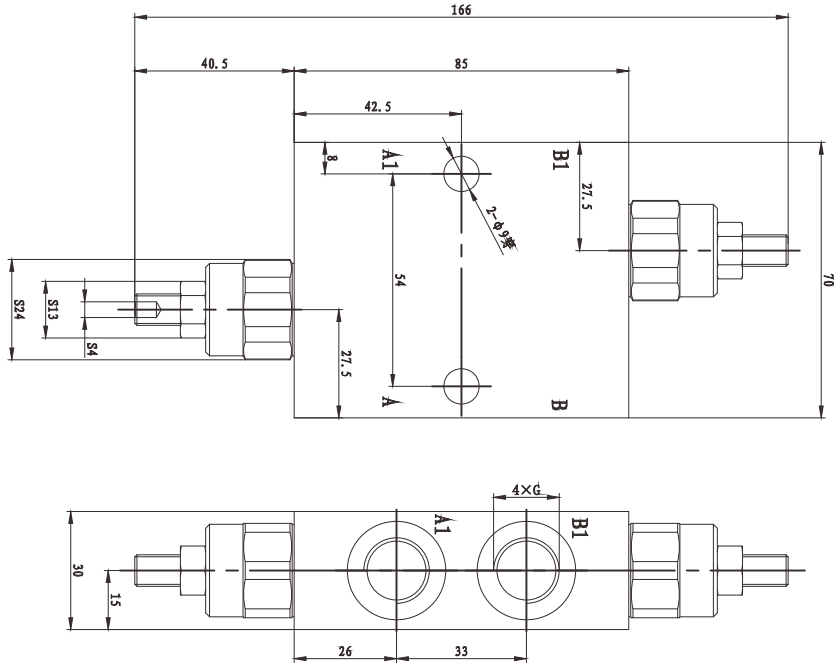
"B" 阀口压力等级代码: 10; 25  
Pressure range code  
Valve"B":10;25

调节杆类型代码: A  
(见上表)  
Code adjustments:A  
(see table above)

"A" 阀口压力等级代码: 10; 25  
Pressure range code  
Valve"A":10;25

▶ NHDR 安装尺寸 / Installation dimensions

NHDR-3/8



NHDR-1/2

