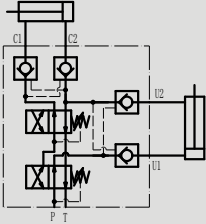


HSVRAP80/100SE 自动换向阀

DOUBLE ACTING PLOUGH OVERTURNING VALVES BY UP MOULDBOARD LOAD SHIFTING

符号 SYMBOL



▶ 技术参数 Technical data

型号 Model	HSVRAP80/100SE
工作压力 (Mpa) Operating pressure(Mpa)	40
最大换向压力 (Mpa) Max .Exchange pressure(Mpa)	25
单向阀开启压力(Mpa)	0.3
溢流阀设定压力(Mpa)	15
油液清洁度 Oil cleanliness	NAS1638 9 级和 ISO4406 20/18/15 级 NAS1638 class 9 and ISO4406 class 20/18/15
阀体 (材料) 表面处理 Valve body (Material) Surface treatment	表面镀白锌处理 Surface clear zinc plating

▶ HSVRAP80/100SE 安装尺寸 /Installation dimensions

