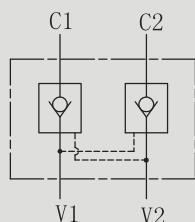


HKW 双向液压锁

HKW DOUBLE-DIRECTION HYDRAULIC LOCK

符号 SYMBOL



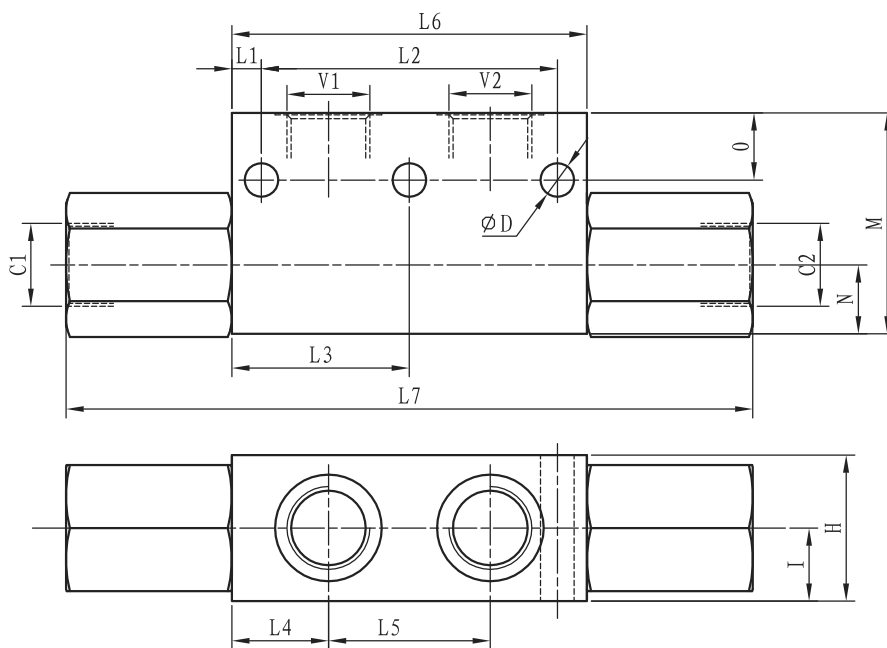
油液从V1口到C1口或V2口到C2口可以自由流动，为了保证液压缸或其它执行器锁定在固定的位置，油液由C1流向V1或C2流向V2时，阀处于关闭状态，当作用在V2口或V1口的先导压力足够大时，相对应的V1到C1或V2到C2是导通的。

Flow is allowed to pass in one direction (V1 to C1 or V2 to C2), then the valve remains closed (checked) in both reverse directions (C1 to V1 or C2 to V2) in order to hold and lock in position the cylinder or other actuators; reverse flow is possible only when sufficient pilot pressure is applied at V2 or V1, which act as cross connected pilot ports, and the pilot piston lifts the poppet from its seat overcoming cylinder port pressure.

▶ 技术参数 Technical data

型号 Model	HKW-1/4-15	HKW-3/8-35	HKW-1/2-50	HKW-3/4-100
最大流量 (L/min) Max Flow rate (L/min)	15	35	50	100
最大工作压力 (Mpa) Max operating pressure (MPa)	31.5			
控制比 Pilot ratio	4:1	5.2:1	4.3:1	3.9:1
阀体 (材料) 表面处理 Valve body (Material) Surface treatment	(钢体) 表面镀锌处理 (Steel body) Surface clear zinc plating			
油液清洁度 Oil cleanliness	NAS1638 9级和ISO4406 20/18/15级 NAS1638 class 9 and ISO4406 class 20/18/15			

HKW安装尺寸 HKW Installation Dimensions



型号 Model	L1	L2	L3	L4	L5	L6	L7	O	N	M	I	H	φ D	V1 C1 V2 C2
HKW-1/4-15	-	-	32.2	17.5	29	63	130	8	14.5	43	14.5	29	6.4	G1/4"
HKW-3/8-35	-	-	32	17	30	64	120	9	13	40	15	30	6	G3/8"
HKW-1/2-50	7.5	75	-	24.5	41	90	174	17	17.5	56	18.5	37	8.5	G1/2"
HKW-3/4-100	8	104	-	30	60	120	213	16	25	70	25	50	9	G3/4"