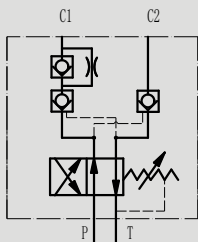


## HSVRAP60/80SE 自动换向阀

DOUBLE ACTING PLOUGH  
OVERTURNING VALVES

## 符号 SYMBOL



## ▶ 技术参数 Technical data

型号 Model	HSVRAP60/80SE
工作压力 (Mpa) Operating pressure(Mpa)	40
最大换向压力 (Mpa) Max .Exchange pressure(Mpa)	25
单向阀开启压力(Mpa)	0.3
溢流阀设定压力(Mpa)	14
油液清洁度 Oil cleanliness	NAS1638 9 级和 ISO4406 20/18/15 级 NAS1638 class 9 and ISO4406 class 20/18/15
阀体 (材料) 表面处理 Valve body (Material) Surface treatment	表面镀白锌处理 Surface clear zinc plating

## ▶ HSVRAP60/80SE 安装尺寸 /Installation dimensions

