

## DWMG32 型手动换向阀

### DWMG32 SERIES MANUALLY OPERATED DIRECTIONAL VALVES



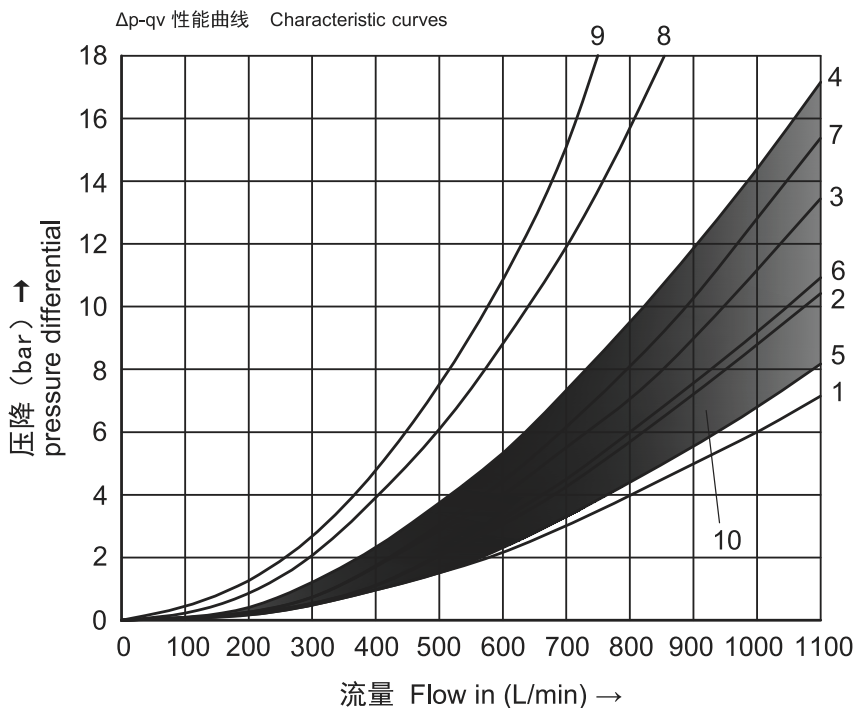
DWMG32 型手动换向阀是通过手柄的操作使阀芯做轴向移动，从而对油路进行切换的直动式换向阀，采用定位器或弹簧复位装置。

DWMG32 series manually operated directional valves are direct type directional valves ,It can control the start ,stop & direction of fluid flow. This series with detent or return spring are available.

#### ▶ 技术参数 Technical data

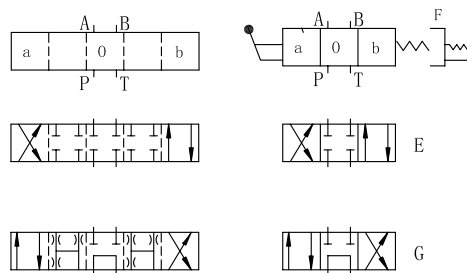
通径 Size	32
流量 Flow rate(L/min)	1100
工作压力 (Mpa)Operating pressure(Mpa)	A、B、P 油口 31.5T 油口 16/A、B、P oilports 31.5 T oil ports16
重量 ( 千克 ) Weight(KGS)	39.2
阀体 ( 材料 ) 表面处理 Valve body (Material) Surface treatment	铸件 表面磷化处理 casting phosphating surface
油液清洁度 /Oilcleanliness	NAS1638 9 级和 ISO4406 20/18/15 级 NAS1638 class 9 and ISO4406 class 20/18/15

特性曲线 Characteristic curves 4DWMG32

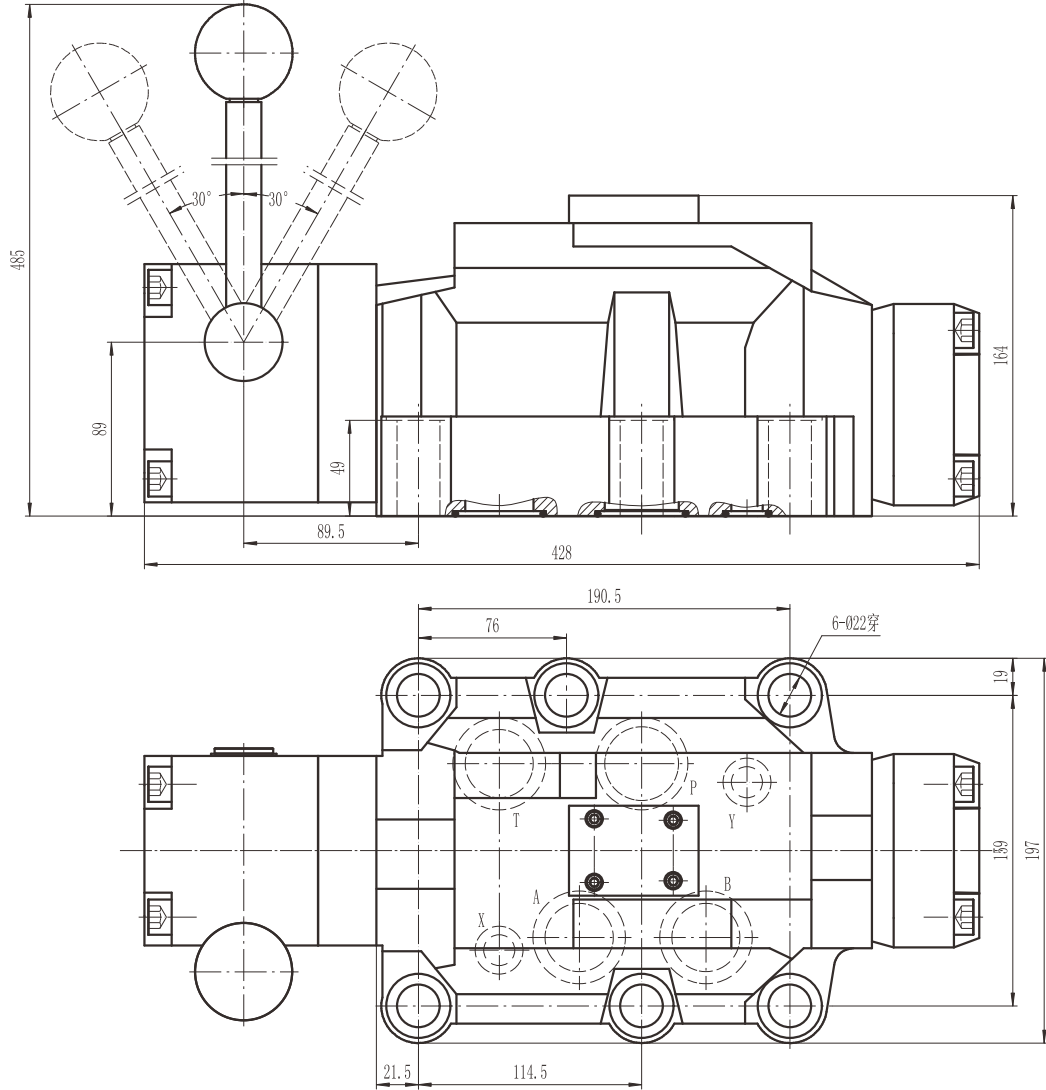


机能符号 Spool symbol	切换位置 Spool position					
	P-A	P-B	A-T	B-T	P-T	B-A
E	1	1	2	3	-	-
G	6	5	6	7	7	-

DWMG32 机能符号 DWMG32 Spool symbols



▶ DWMG32 外型尺寸 DWMG32 Overall Dimensions



阀固定螺钉  
6 个 M20X80 GB/T 70.1-2000-12.9 级 拧紧扭矩  
Ma=430Nm  
P.T.A.B 口 O 型圈:  $\Phi$  42X3  
X.Y 口 O 型圈:  $\Phi$  18.5  $\times$  3.1

Valve's set screw  
6 of M20  $\times$  80 GB/T70.1-2000-12.9 Tightening torque Ma=430Nm.  
O-ring for P.T.A.B Port:  $\Phi$  42  $\times$  3  
O-ring for X.Y Port:  $\Phi$  18.5  $\times$  3.1

4	DWMG	32	E	60	/	F	*	*
---	------	----	---	----	---	---	---	---

3=三油口  
4=四油口  
3=3 Oil ports  
4=4 Oil ports

型号  
Model

口径 :32  
Size :32

机能符号  
Spool type

附加说明  
For further details

无 = 丁晴橡胶  
V= 氟橡胶  
No code =NBR seals  
V=FPM seals

无=弹簧复位 F=带定位器  
No code= Spring return  
F=With detent

系列号  
Size32=60