

DWVG16 型手动换向阀

DWVG16 SERIES MANUALLY OPERATED DIRECTIONAL VALVES



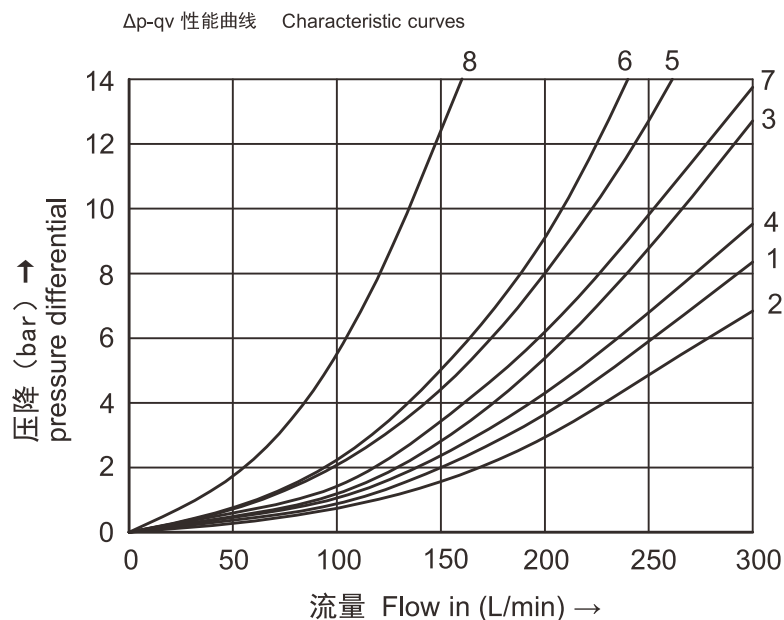
DWVG16 型手动换向阀是通过手柄的操作使阀芯做轴向移动，从而对油路进行切换的直动式换向阀，采用定位器或弹簧复位装置。

DWVG16 series manually operated directional valves are direct type directional valves ,It can control the start ,stop & direction of fluid flow. This series with detent or return spring are available.

▶ 技术参数 Technical data

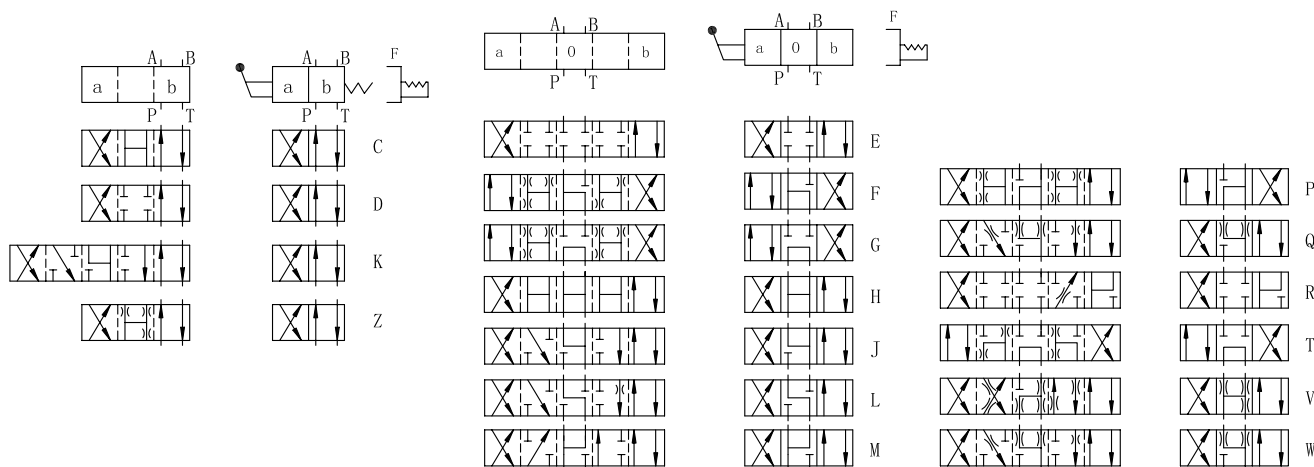
通径 Size	16
流量 Flow rate(L/min)	300
工作压力 (Mpa)Operating pressure(Mpa)	A、B、P 油口 31.5T 油口 16/A、B、P oilports 31.5 T oil ports16
重量 (千克) Weight(KGS)	8.9
阀体 (材料) 表面处理 Valve body (Material) Surface treatment	铸件 表面磷化处理 casting phosphating surface
油液清洁度 /Oilcleanliness	NAS1638 9 级和 ISO4406 20/18/15 级 NAS1638 class 9 and ISO4406 class 20/18/15

特性曲线 Characteristic curves DWMG16

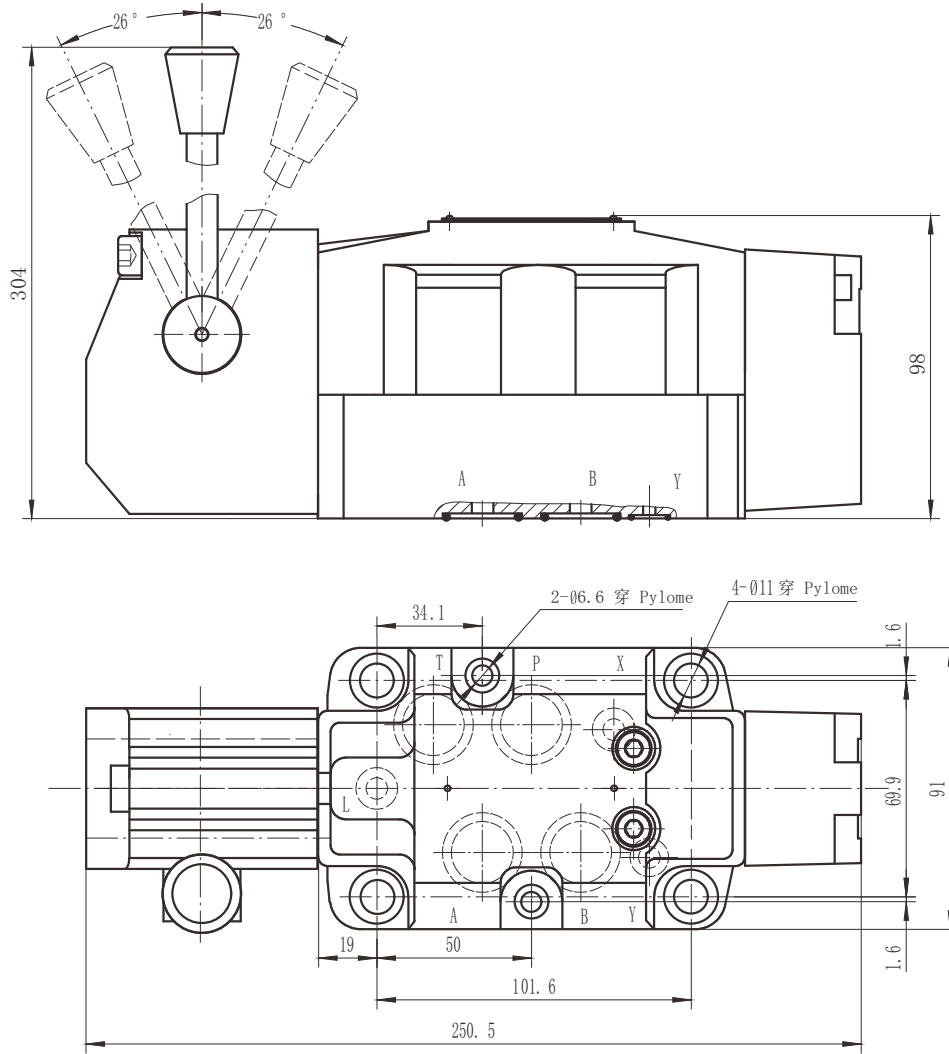


机能符号 Spool symbol	切换位置 Spool position				
	P-A	P-B	A-T	B-T	P-T
E,D,Y	1	1	3	3	-
F	2	2	3	3	-
G,T	5	1	3	7	6
H,C,Q	2	2	3	3	-
V,Z	2	2	3	3	-
J,K,L	1	1	3	3	-
M,W	2	2	4	3	-
R	2	2	4	-	-

DWMG16 机能符号 DWMG16 Spool symbols



▶ DWMG16 外型尺寸 DWMG16 Overall Dimensions



阀固定螺钉
 4个 M10X60GB/T70.1-12.9 级 拧紧扭矩 Ma=75Nm
 2个 M6X60GB/T70.1-12.9 级 拧紧扭矩 Ma=15.5Nm
 P.T.A.B 口 O 型圈: Φ 26X2.4
 X.Y.L 口 O 型圈: Φ 15X1.9

Valve's set screw
 4 of M10 \times 60 GB/T70.1-12.9 Tightening torque Ma=75Nm.
 2 of M6 \times 60 GB/T70.1-12.9 Tightening torque Ma=15.5Nm.
 O-ring for P.T.A.B Port: ϕ 26 \times 2.4
 O-ring for X.Y.L Port: ϕ 15 \times 1.9

4	DWMG	16	E	30	F	*	*
3=三油口 4=四油口 3=3 Oil ports 4=4 Oil ports	型号 Model	口径 :16 Size :16	机能符号 Spool type				
							附加说明 For further details 无 = 丁晴橡胶 V= 氟橡胶 No code = NBR seals V=FPM seals 无=弹簧复位 F=带定位器 No code= Spring return F=With detent 系列号 16 口径=30 Series number Size16=30