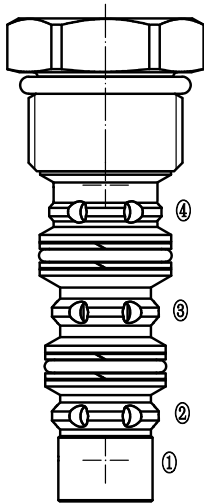


# HSHS50-43

## 三位三通热油梭阀

Three-Way, Three-Position, Spool-Type  
Hot oil shuttle Valve



The HSHS50-43 is a screw-in, cartridge style, spring centered spool, closed center, 3-position, 3-way hot oil shuttle valve for use with general purpose hydraulic fluids. The valve CAN be used for hydrostatic transmissions to direct charge pump oil to a heat exchanger or to tank. HSHS50-43是一种螺旋式, 插装式, 弹簧对中中位闭合的三位三通热油梭阀, 用于通用液压传动。该阀可用于静液传输, 将油直接充入热交换器或油箱。

### OPERATION

#### 工作原理

With internal piloting at port 1,2 or 4,the HSHS50-43 with direct oil from the port opposite of the piloted port 3, thus removing oil from the low-pressure side for cooling or filtration purpose.

The valve has a spring-centered spool,and is closed in neutral position. 利用油口1, 2, 或4处的内强压力信号, HSHS50-43将油液从与内腔油口相反的油口流到油口3, 从而排出低压端的油液, 以达到冷却或过滤目的。该阀带有弹簧对中阀芯, 并且再中位闭合。

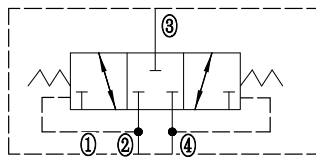
### FEATURES

#### 特性

阀芯和阀套经硬质处理, 耐用。工业常规阀孔。  
Hardened spool and cage for long life. Industry-common cavity.

### SYMBOL

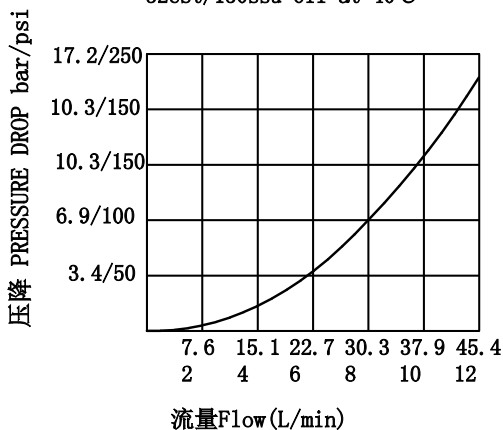
机能符号



### PRESSURE DROP VS.FLOW

#### 性能图

②to③ and ④to③  
2口到3口; 4口到3口  
40℃时32cSt/150ssu的油液  
32cSt/150ssu Oil at 40℃



### SPECIFICATIONS

#### 技术参数

#### 工作压力 Operating Pressure:

350bar ( 5000psi) when used in steel body.

**流量 Flow Rate:** See Performance Chart

**弹簧压力值:** Bias Spring Value: 4.1bar(60spi)

#### 内泄漏Internal Leakage:

<541ML/min ( 328ml/min ) Max.at 207bar ( 5000psi)

#### 温度范围Temperature Range:

-40℃to+120℃ with standard polyurethane seals

#### 过滤Filtration:

Critical Application-ISO 18/16/13

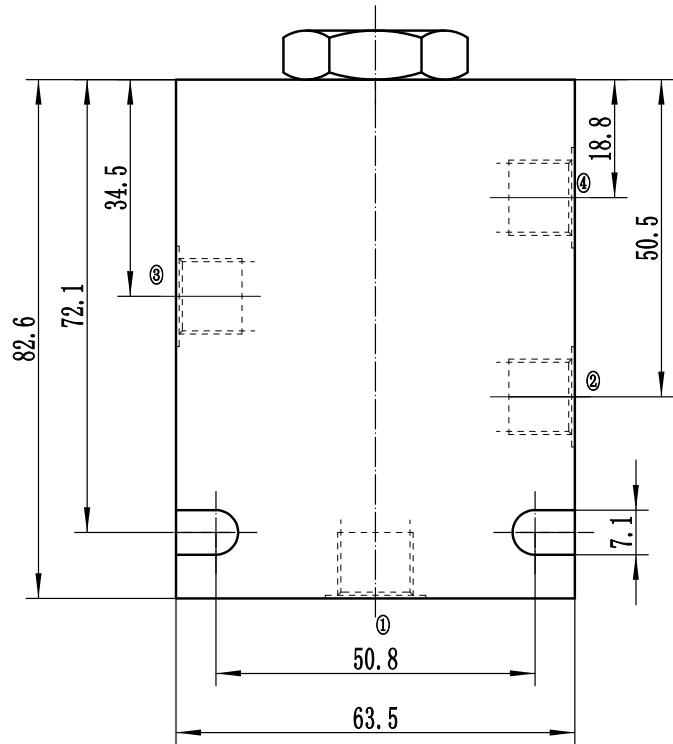
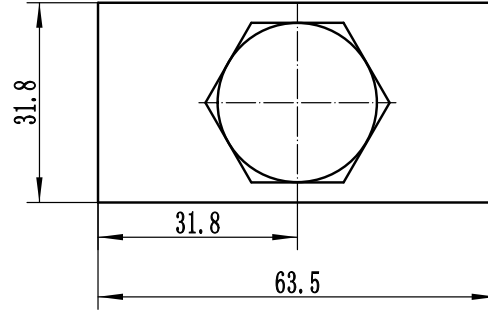
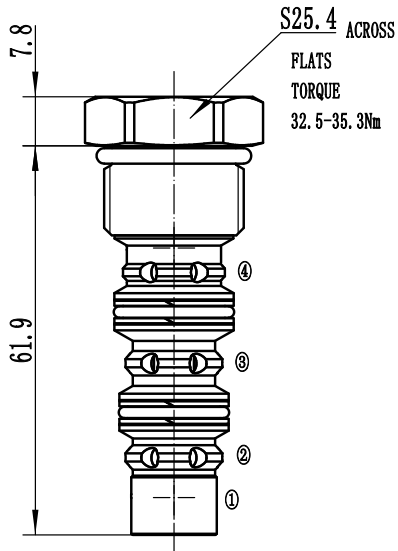
Non-Critical Application-ISO 19/17/14

**介质Fluids:** 矿物油Mineral-based fluids

**插孔Cavity:** 10-4

INSTALLATION DIMENSIONS  
安装尺寸

Unit=Millimeters



HSHS50-43 - \* \* \* - P

BODY PORTING 阀块油口  
0=只订购插件件 Cartridge Only  
SAE6=6TS (45, 表面镀锌)  
SAE6=6TD (QT)  
钢制或球墨铸铁阀块最大工作压力345bar  
Steel and Ductile Iron Valve blocks up to 345 bar

密封材料 Sealing material  
P=Polyurethane 聚氨酯