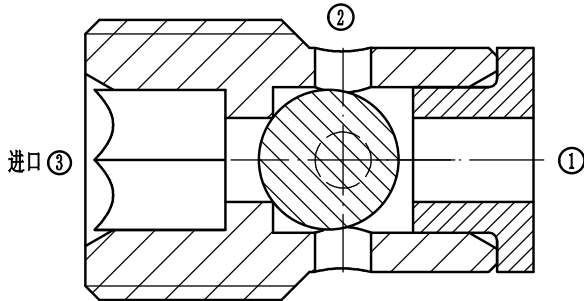


HS1SH10

梭阀

Shuttle Valve
Ball type



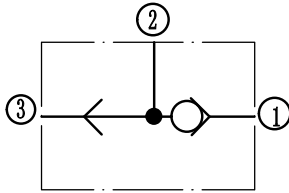
OPERATION

工作原理

When a higher pressure is sensed at inlet 1 than at inlet 2 the ball within the cartridge is forced against a seat opening the higher pressure to outlet. When the higher pressure appears at inlet 2 the ball is forced against the other seat which blocks inlet 1 and opens up inlet 2 to outlet.

SYMBOL

机能符号



FEATURES

特性

插装设计便于快速安装在阀体或阀组上

Cartridge design enabling speedy servicing when mounted in a body or in a composite manifold.

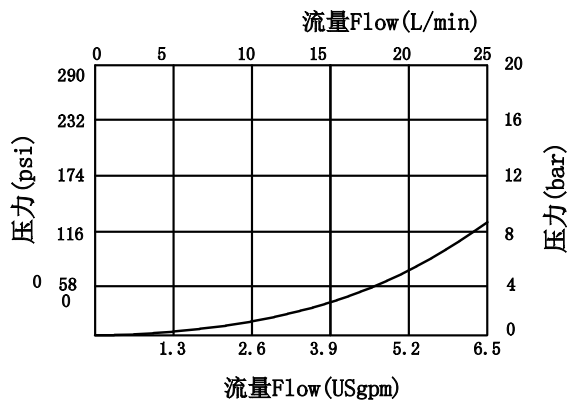
PRESSURE DROP VS.FLOW

性能图

①to②or③to②

40°C时32cSt/150ssu的油液
150ssu/32cSt Oil at 40°C

压降 PRESSURE DROP bar/psi



SPECIFICATIONS

技术参数

最大工作压力 Max Working Pressure: 350bar

最大流量 Max Flow: 20L/min

泄漏 Internal Leakage: <0.6ML/min. Max at 350bar

温度范围 Temperature Range: -30°C+90°C

过滤 Filtration:

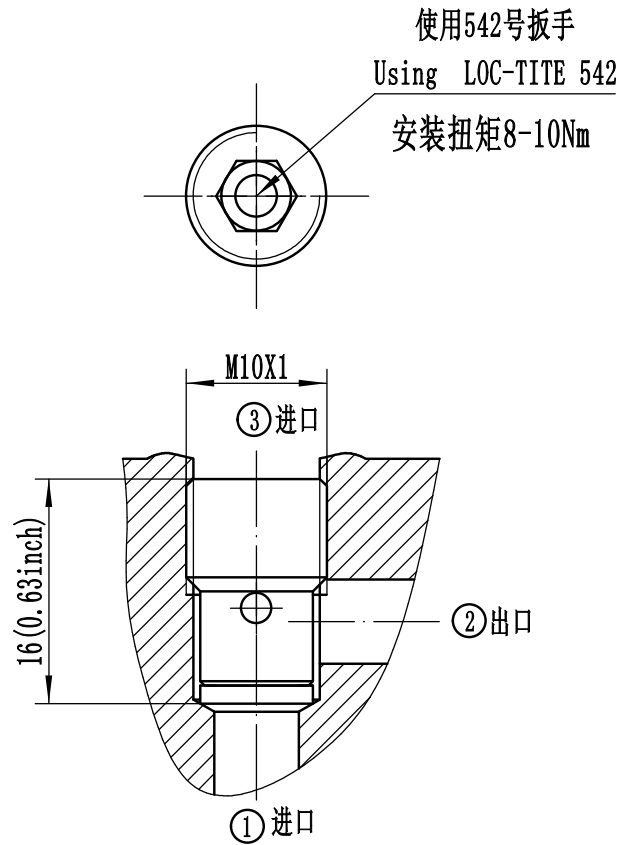
Critical Application-ISO 18/16/13

Non-Critical Application-ISO 19/17/14吧

介质 Fluids: 矿物油 Mineral-based fluids

INSTALLATION DIMENSIONS
安装尺寸

Unit=Millimeters



HS1SH10

基本代号-仅插件
Basic Code-Cartridge Only