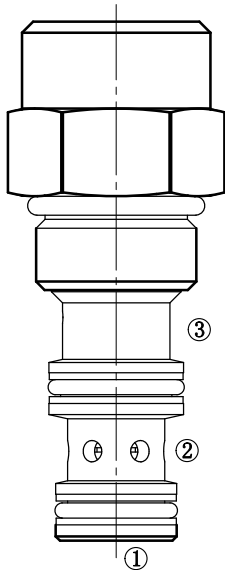


HSEP08-35

滑阀型液控方向阀



The HSEP08-35 is a screw-in, cartridge style, spool type, hydraulic directional element

OPERATION

工作原理

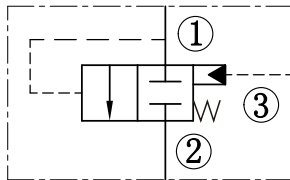
The HSEP08-35 is a spring-biased blocking valve, which will open port ① to ② when pressure at port ① exceeds the cumulative pressure at port ③ and the bias spring pressure value. With nopressure at port ③ flow will be allowed from port ① to ② once the bias spring force is overcome with pressure at port ①

HSEP08-35为弹簧截止阀,只有在①口的压力超过③口的压力和弹簧预压力之和时,阀芯才会移动,从而使油液由①完全流向②。HSEP08-35为液控闭合方向阀。

当③口无压力时,一旦①口的压力超过弹簧预压力,油液将从①流向②。

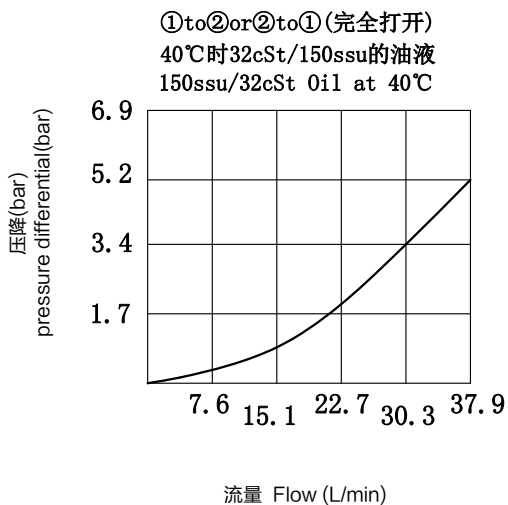
SYMBOL

机能符号



PRESSURE DROP VS.FLOW

性能图



FEATURES

特性

- Multiple function/application potential. · 功能多,用途广
- Low pressure drop. · 压力损失小
- Compact size. · 尺寸紧凑
- Industry-common cavity. · 工业常规阀孔

SPECIFICATIONS

技术参数

最大工作压力 Max Working Pressure : 345bar

流量Flow Rate:参见性能图

See Pressure Drop VS.Flow graph

内泄漏Internal Leakage:<164ML/min.Max at 207bar

温度范围Temperature Range:-30℃+120℃

过滤Filtration:

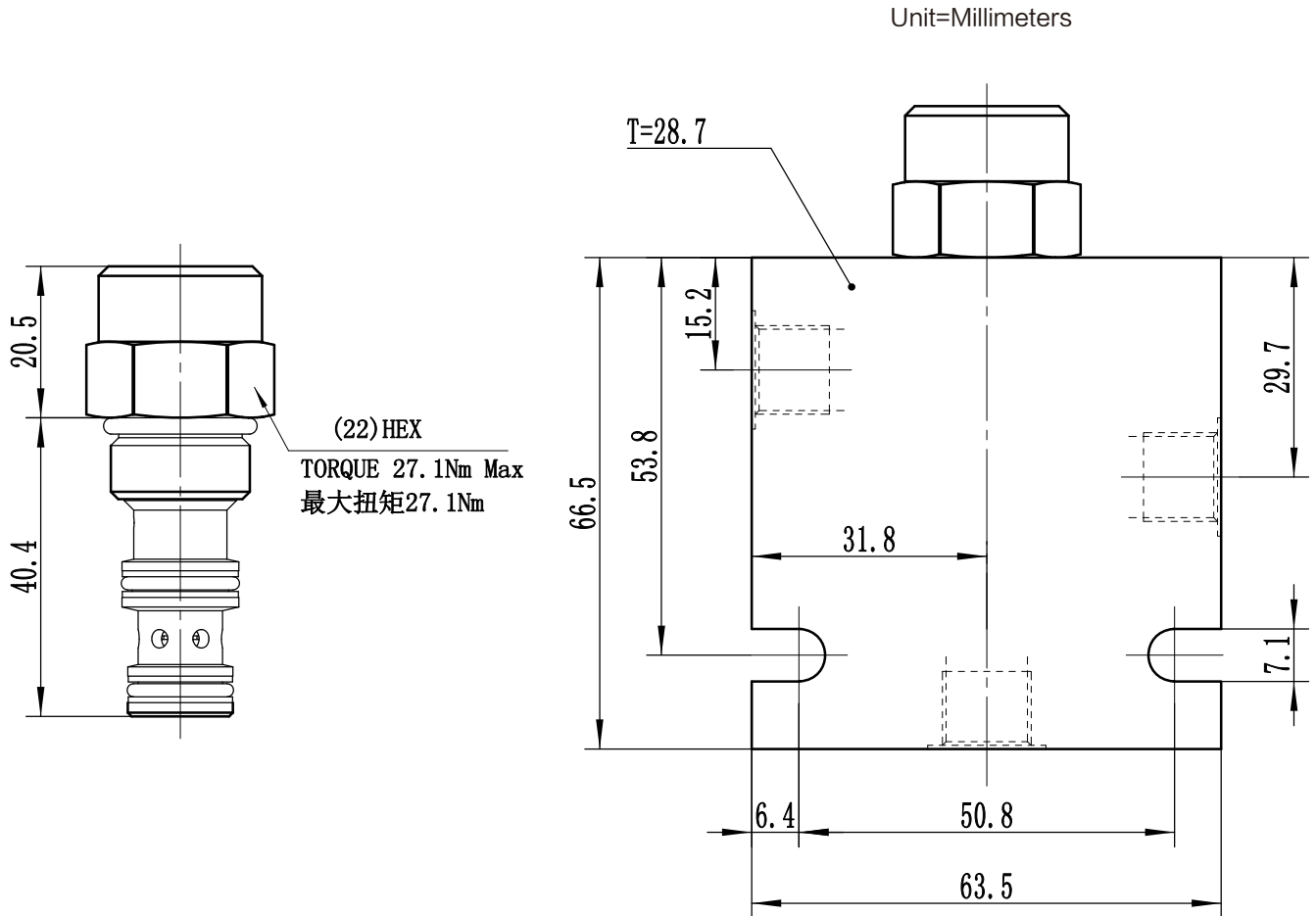
Critical Application-ISO 18/16/13

Non-Critical Application-ISO 19/17/14

介质Fluids:矿物油Mineral-based fluids

插孔Cavity:08-3 See page 参见页

INSTALLATION DIMENSIONS
安装尺寸



HSEP08-35 | * | * | * | * | *

BODY PORTING 阀块油口
0=只订购插装件
6TA=SAE6(铝制阀块)
6TF=SAE6(钢制阀块)
铝制阀块最大工作压力240bar
钢制和球墨铸铁阀块最大工作压力345bar

密封材料
N=Nitrile Rubber Buna 丁晴橡胶(标准型)

弹簧规格
10 0.7bar(10psi)
40 2.8bar(40psi)
80 5.5bar(80psi)
110 7.6bar(110psi)
150 10.3bar(150psi)