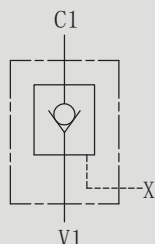


HPLK 型液控单向阀

HPLK PILOT OPERATED
CHECK VALVES

符号 SYMBOL



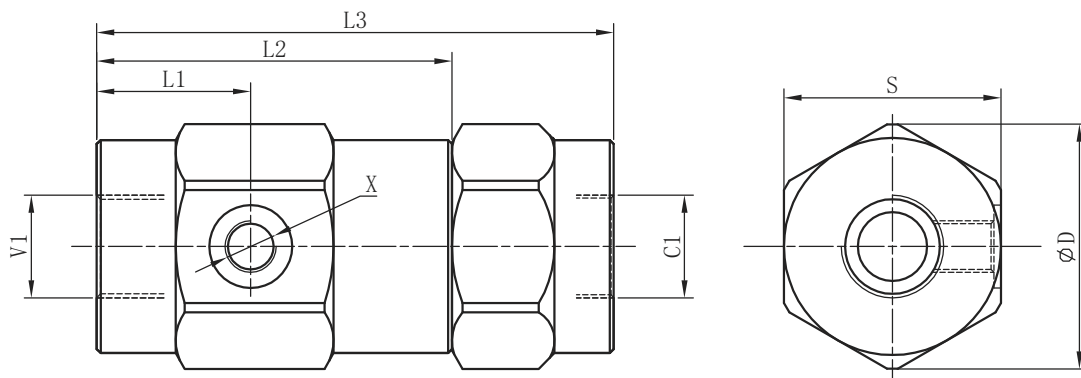
当V1口压力升高至弹簧设定压力时，阀芯被顶起脱离阀座，油液从V1到C1可以自由流动，正常状态下从C1到V1阀是关闭的，当X口的先导压力足够大时，先导油作用在先导活塞上推动阀芯脱离阀座油液可以从C1到V1自由流动，在阀处于截止状态时，阀为零泄漏。

Flow is allowed to pass from V1 to C1 when pressure at V1 rises above the spring bias pressure and the poppet is pushed from its seat. The valve is normally closed (checked) from C1 to V1; when sufficient pilot pressure is present at X port, the pilot piston acts to push the poppet from its seat and flow is allowed from C1 to V1. Precision machining and hardening processes allow virtually leak-free performance in the checked condition.

▶ 技术参数 Technical data

型号 Model	HPLK-1/4-20	HPLK-3/8-35	HPLK-1/2-50	HPLK-3/4-100	HPLK-1-150
最大流量 (L/min) Max Flow rate (L/min)	20	35	50	100	150
最大工作压力 (Mpa) Max operating pressure (MPa)	31.5				
控制比 /Pilot ratio	4.7:1	4.4:1	4.6:1	3.8:1	3.2:1
阀体 (材料) 表面处理 Valve body (Material) Surface treatment	(钢体) 表面镀白锌处理 (Steel body) Surface clear zinc plating				
油液清洁度 Oil cleanliness	NAS1638 9 级和 ISO4406 20/18/15 级 NAS1638 class 9 and ISO4406 class 20/18/15				

HPLK 安装尺寸 HPLK Installation Dimensions



型号 Model	L1	L2	L3	V1 C1	X	S	φ D
HPLK-1/4-20	29	78	101.5	G1/4"	G1/4"	40	44
HPLK-3/8-35	31.5	82	106	G3/8"	G1/4"	41	45
HPLK-1/2-50	36	85	120	G1/2"	G1/4"	42	47
HPLK-3/4-100	39	90	131	G3/4"	G1/4"	55	62

HPLK-1-150 安装尺寸 HPLK-1-150 Installation Dimensions

