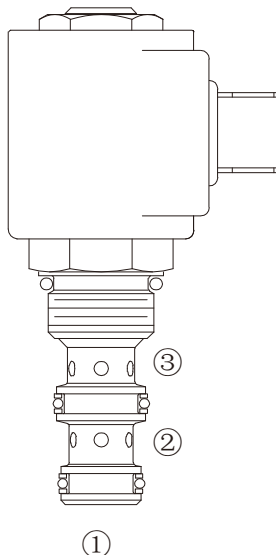


# HSV08-33

## 二位三通电磁阀 滑阀型

### Three-Way, Two-Position, Spool-Type Cartridge Solenoid Valve



#### OPERATION

##### 工作原理

When de-energized, the valve allows flow from ③ to ①, while blocking flow at ②. When energized, the cartridge's spool shifts to allow flow from ② to ①, while blocking flow at ③

失电时, ③和①通, 与②不通;

得电时, ②和①通, 与③不通;

手控应急 Operation of Manual Override Option:

To override, push button in, twist counterclockwise 180° and release.

In this position, valve will remain detented in the shifted condition.

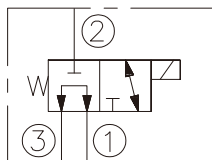
To return to normal operation, push button in, twist clockwise 180° and release. Override will be detented in this position.

应急手动操控方法: 要进行应急操作时, 先按下旋钮, 然后逆时针旋转 180° 后松开, 2与1通, 与3不通;

要恢复操作, 按下按钮顺时针旋转 180° 后松开, 返回到常态。

#### SYMBOL

##### 机能符号



#### FEATURES

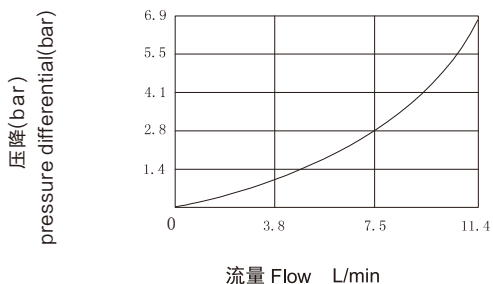
##### 特性

- Continuous-duty solenoid. · 可持续工作的电磁铁。
- Efficient wet-armature construction. · 高效能电磁铁结构。
- Hardened seat for long life. · 长寿命的阀。
- Industry common cavity. · 工业通用插孔。
- Compact size · 结构紧凑。

#### PRESSURE DROP VS.FLOW

##### 性能图

③ to ① — De-energized; 不通电  
38°C时150 ssu/32 cSt的油液 150 ssu/32 cSt Oil at 38°C



#### SPECIFICATIONS

##### 技术参数

**最大工作压力 Max. Operating Pressure:** 207Bar

**流量 Flow rate(L/min):** 参见性能图 See Pressure Drop VS. Flow graph

**内泄漏 Internal Leakage:** 82ml/min max. at 207bar

**介质温度范围 Fluid temperature range:** -30 °C to +120°C

**线圈电压范围 Coil Rating:** 90% to 110% Of Rated Voltage

**过滤 Filtration:**

Critical Application – ISO 18/16/13

Non-Critical Application – ISO 19/17/14

**介质 Fluids:** 矿物油。其它流体请咨询工厂。

Mineral-based fluids.

For other fluid compatibility, consult factory.

**插孔 Cavity:** 08-3

**阀块材料 Body Material:**

6061-T6铝, 允许使用最大压力207bar

钢材允许使用最大压力350bar

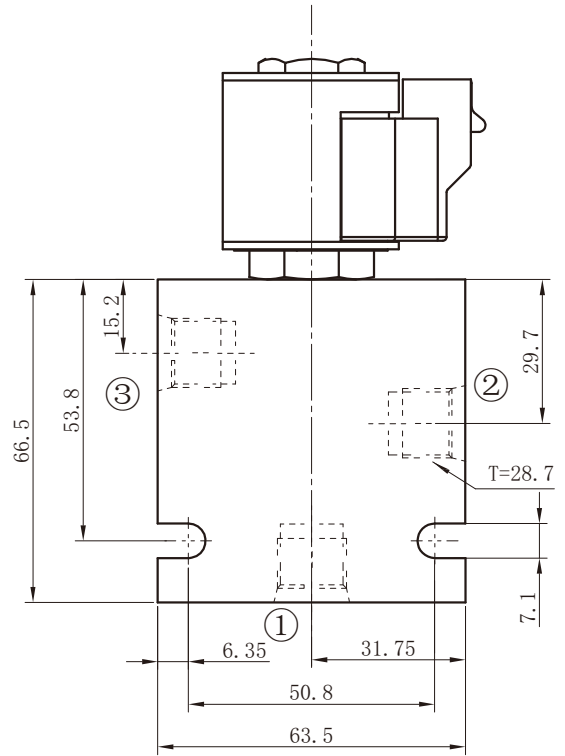
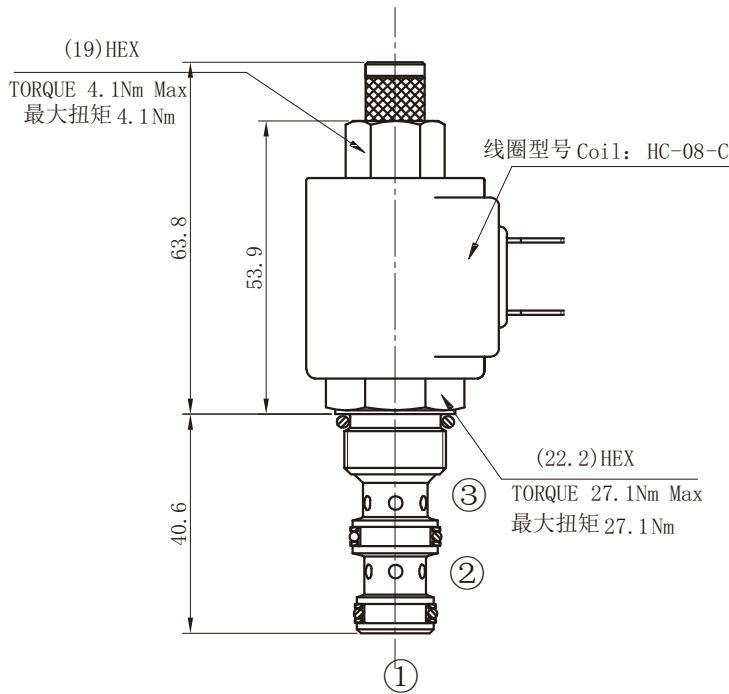
Anodized 6061-T6 aluminum alloy rated at 207bar

Steel rated at 350bar

# INSTALLATION DIMENSIONS 安装尺寸

Coil Must Be Installed With Lettering Up  
安装线圈时字母必须朝上

Unit=Millimeters



<p>电磁阀 Solenoid Valve</p> <p>S=Screen 过滤网 Omit for standard 省略为常规</p> <p>M=Manual Override 手动卸荷 Omit for standard 省略为常规</p> <p>油封 Seal Kits 无 = 丁晴橡胶 (标准型) Omit for Buna N (standard)</p> <p>VOLTAGE 电压 1=12V Volt DC 2=24V Volt DC 3=110V Volt AC 4=220V Volt AC</p>		<p>HSV08-33 * - * - * - * - * - *</p>	<p>BODY PORTING 阀块油口 6T=SAE6 8T=SAE8 3G=G3/8 4G=G1/2 Other Porting is Available 其它螺纹油口也是可以选择的 ( Omit for Cartridge only 省略为不带阀块)</p> <p>COIL CONNECTION 线圈连接 D=Double Lead 双线 H=Hirschmann 三插 ER=Deutsch Connector (Water proof Coil) 德意志插座 (防水线圈)</p>
---	--	---------------------------------------	--