

HSVP0.M18-100

二位三通电磁阀 滑阀型

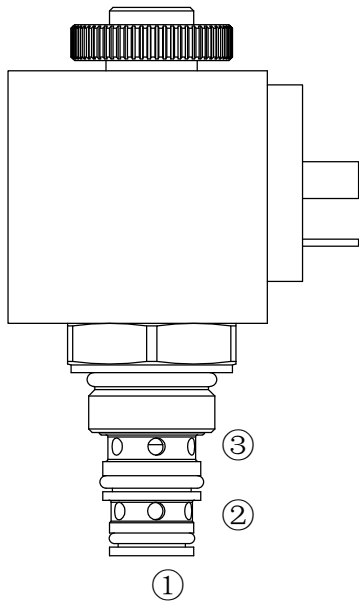
Three-Way, Two-Position, Spool-Type
Cartridge Solenoid Valve

OPERATION

工作原理

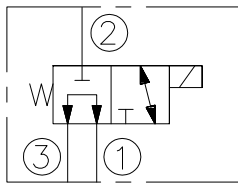
When de-energized, the valve allows flow from ③ to ①, while blocking flow at ②. When energized, the cartridge's spool shifts to allow flow from ② to ①, while blocking flow at ③

失电时, ③和①通, 与②不通;
得电时, ②和①通, 与③不通;



SYMBOL

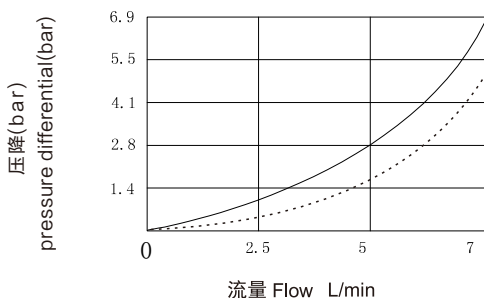
机能符号



PRESSURE DROP VS.FLOW

性能图

① to ② ——— Energized; 通电
③ to ① - - - - - De-energized; 不通电
40°C时32cSt / 150 ssu的油液



FEATURES

特性

- Continuous-duty solenoid. · 可持续工作的电磁铁。
- Efficient wet-armature construction. · 高效能电磁铁结构。
- Hardened seat for long life. · 长寿命的阀。
- Industry common cavity. · 工业通用插孔。
- Compact size · 结构紧凑。

SPECIFICATIONS

技术参数

最大工作压力 Max. Operating Pressure : 210Bar
流量 Flow rate(L/min): 参见性能图 See Pressure Drop VS.Flow
内泄漏 Internal Leakage: 30ml/min max. at 210bar
介质温度范围 Fluid temperature range: -20 °C to +70°C
线圈电压范围 Coil Rating: 90% to 110% Of Rated Voltage
过滤 Filtration:
 Critical Application – ISO 18/16/13
 Non-Critical Application – ISO 19/17/14
介质 Fluids: 矿物油。其它流体请咨询工厂。
 Mineral-based fluids.
 For other fluid compatibility, consult factory.
插孔 Cavity: 08-3B, See page 129 08-3B, 参见 129页
阀块材料 Body Material:
 6061-T6铝, 允许使用最大压力207bar
 钢材允许使用最大压力350bar
 Anodized 6061-T6 aluminum alloy rated at 207bar
 Steel rated at 350bar

INSTALLATION DIMENSIONS
安装尺寸

Unit=Millimeters

