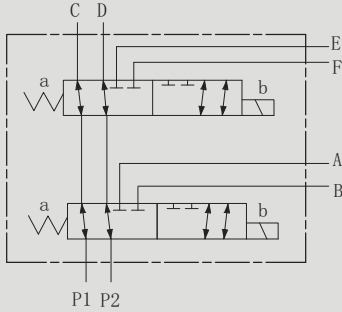


2KVH 多回路选择阀

2KVH FLOW DIVERTERS

符号 SYMBOL

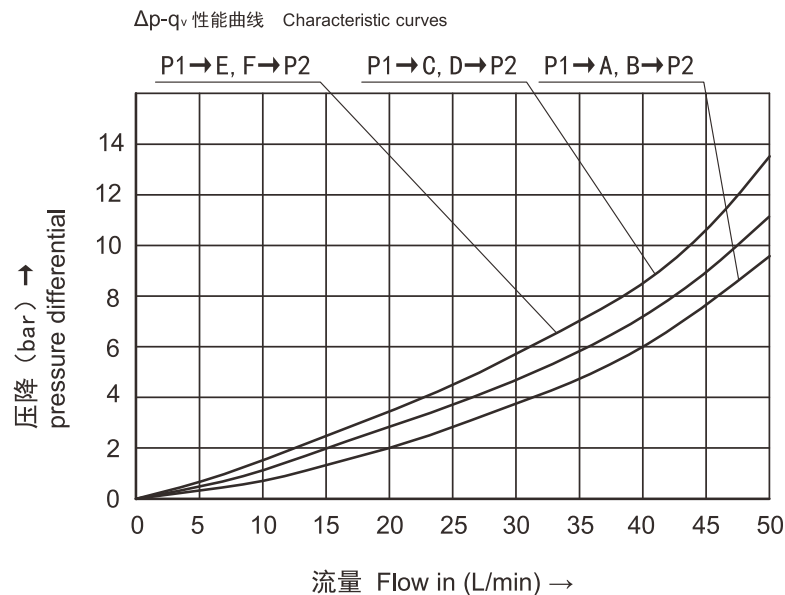


技术参数 Technical data

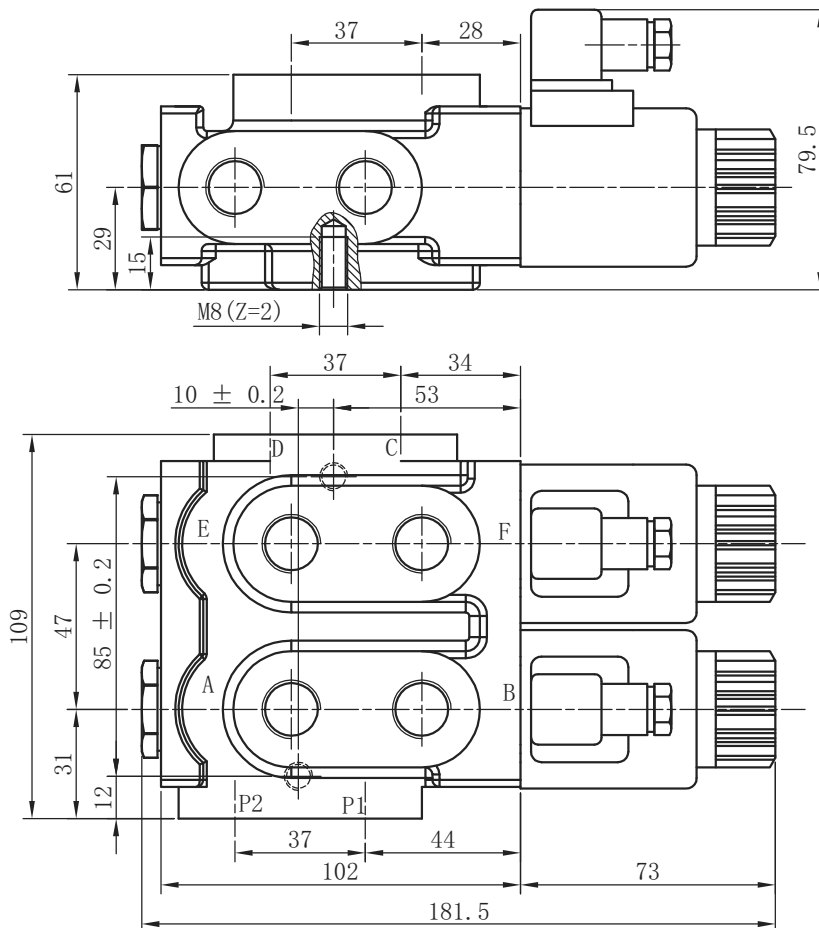
型号 Model	2KVH
最大流量 (L/min) Max Flow rate (L/min)	50
最大工作压力 (Mpa) Max operating pressure(MPa)	25
阀体 (材料) 表面处理 Valve body (Material) Surface treatment	(铸件) 表面磷化处理 / (casting) phosphating surface
油液清洁度 Oil cleanliness	NAS1638 9 级和 ISO4406 20/18/15 级 NAS1638 class 9 and ISO4406 class 20/18/15

特性曲线 (在使用 HLP46 , 油温=40 °C ± 5 °C 时测得)

Characteristic curves (measured with HLP46 , $Voil=40\text{ }^{\circ}\text{C} \pm 5\text{ }^{\circ}\text{C}$)



安装尺寸 Installation Dimensions



2KVH	*	*	Z5L	*
------	---	---	-----	---

型号
Model

螺纹连接 Threaded connection
G 3/8 G 1/2 SAE 8

电压 Voltage DC12;DC24

附加说明
For further details

Z5L= 带灯大方形插头
Z5L=Large quadrate plug with light