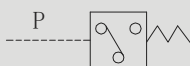


## LPS型压力继电器

### LPS-01 PRESSURE SWITCH

#### 符号 SYMBOL

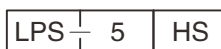


LPS 型柱塞式压力继电器，采用微动开关发讯，用于控制带电器的液压元件通断，使执行机构工作或停止。该型号压力继电器压力控制范围大、操作方便、安装简单。

LPS-01 series piston pressure switches are adopted micro-switch to control the start or stop of hydraulic components, it has characteristic of large pressure control range ,easy operation and installation.

#### ▶ 技术参数 Technical data

型号 Model	LPS
工作压力 (Mpa) Operating Pressure(Mpa)	0.5~31.5
连接螺纹 Connection threaded	G1/4
最高使用电压 (V) Max. operating pressure(V)	240
开关频率 (次 / 分) Switching frequency(Time/min)	至 300/ To 300
重量 ( 千克 ) Weight(KGS)	0.8
油液清洁度 /Oil cleanliness	NAS1638 9 级和 ISO4406 20/18/15 级 NAS1638 class 9 and ISO4406 class 20/18/15



管式压力继电器  
Pipeline pressure switch

压力等级 Pressure Range  
7.5=3~7.5MPa 14=7.5~14Mpa  
21=14~21MPa 35=17~35MPa

Design No. 设计号