

HSV10-22

二位二通电磁阀 常闭 锥阀型

Normally-Closed, Two-Way, Two-Position, Pilot-Operated Cartridge Solenoid Valve With Reverse Flow Energized

OPERATION

工作原理

When de-energized, the valve acts as a check valve, allowing flow from ① to ②, while blocking flow from ② to ①.

When energized, the poppet lifts to open the ② to ① flow path. In this mode, flow is also allowed from ① to ②.

当电磁铁不通电时，①到②相当于单向阀，②到①关闭；

当电磁铁通电时，②到①，①到②互通。

手控应急 Operation of Manual Override Option: To override, push button in, twist counterclockwise and release. In this position, the valve will remain open. To return to normal operation, push button in, twist clockwise and release. Override will be detented in this position.

先推进按钮，然后逆时针方向旋转，释放。此时阀口打开；返回到常态推进按钮，然后顺时针方向旋转，释放。旋钮将被固定在这位置。

FEATURES

特性

- Continuous-duty solenoid. · 可持续工作的电磁铁。
- Efficient wet-armature construction. · 高效能电磁铁结构。
- Hardened seat for long life. · 长寿命的阀。
- Industry common cavity. · 工业通用插孔。
- Compact size · 结构紧凑。

SPECIFICATIONS

技术参数

最大工作压力 Max. Operating Pressure: 207Bar

流量 Flow rate (L/min): 参见性能图 See Pressure Drop VS. Flow graph

内泄漏 Internal Leakage: < 3drops/min. Max at 207 bar

介质温度范围 Fluid temperature range: -30 °C to +120°C

线圈电压范围 Coil Rating: 90% to 110% Of Rated Voltage

过滤 Filtration:

Critical Application - ISO 18/16/13

Non-Critical Application - ISO 19/17/14

介质 Fluids: 矿物油。其它流体请咨询工厂。

Mineral-based fluids.

For other fluid compatibility, consult factory.

插孔 Cavity: 10-2

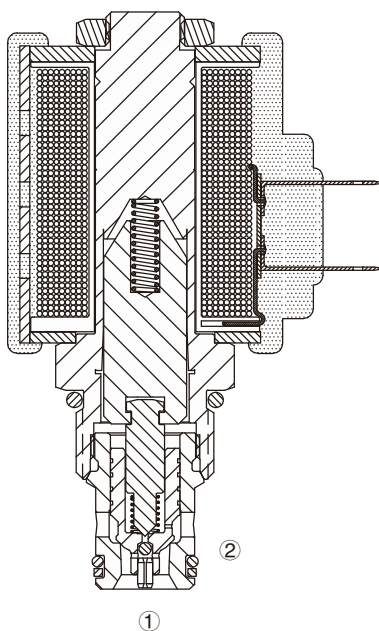
阀块材料 Body Material:

6061-T6铝，允许使用最大压力207bar

钢材允许使用最大压力350bar

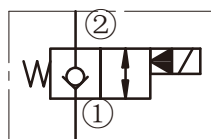
Anodized 6061-T6 aluminum alloy rated at 207bar

Steel rated at 350bar



SYMBOL

机能符号

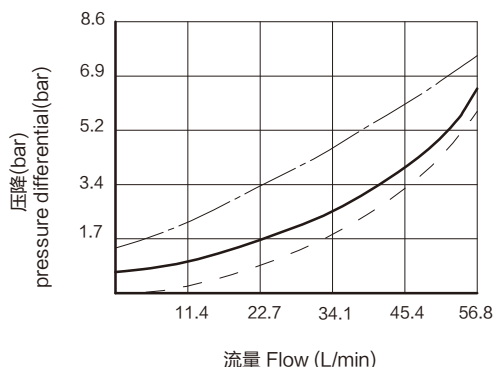


PRESSURE DROP VS. FLOW

性能图

- ② to ① — — Energized ; 通电
- ① to ② - - - De-energized; 不通电
- ① to ② ——— Energized ; 通电

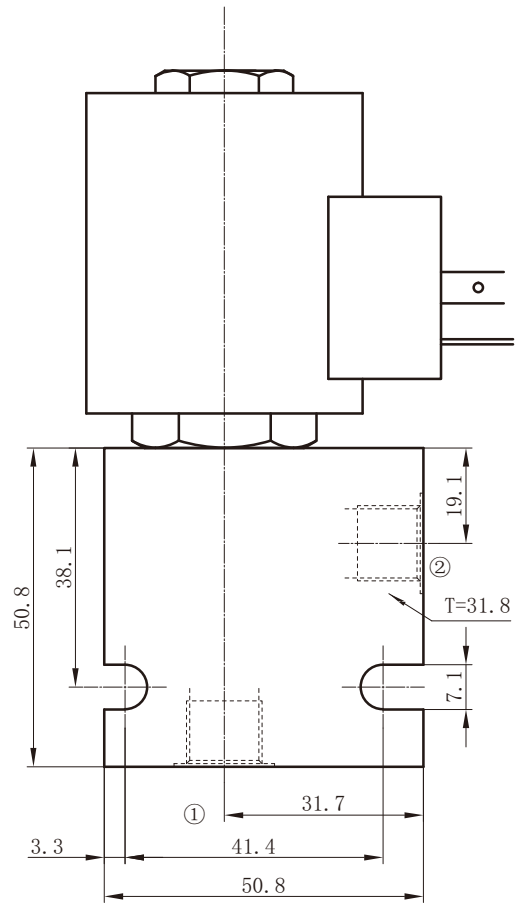
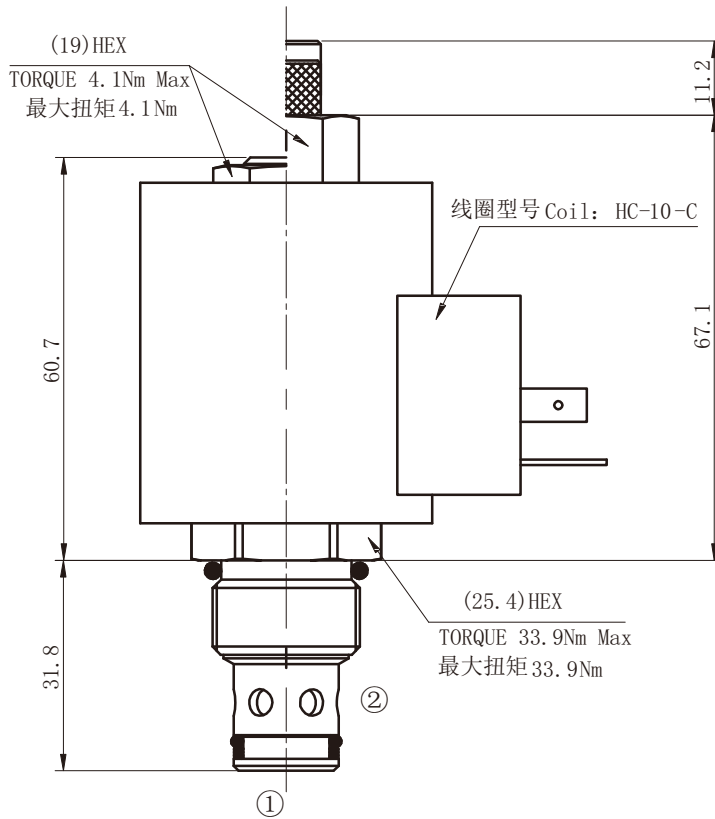
38°C时150 ssu/32 cSt的油液 150 ssu/32 cSt Oil at 38°C



INSTALLATION DIMENSIONS 安装尺寸

Coil Must Be Installed With Lettering Up
安装线圈时字母必须朝上

Unit=Millimeters



<p>HSV10-22 * * * * *</p>	
<p>电磁阀 Solenoid Valve</p>	<p>BODY PORTING 阀块油口 6T=SAE6 8T=SAE8 3G=G3/8 4G=G1/2 Other Porting is Available 其它螺纹油口也是可以选择的 (Omit for Cartridge only 省略为不带阀块)</p>
<p>M=Manual Override 手动卸荷 Omit for standard 省略为常规</p>	<p>COIL CONNECTION 线圈连接 D=Double Lead 双线 H=Hirschmann 三插 ER=Deutsch Connector (Water proof Coil) 德意志插座 (防水线圈)</p>
<p>油封 Seal Kits 无 = 丁晴橡胶 (标准型) Omit for Buna N (standard)</p>	
<p>VOLTAGE 电压 1=12V Volt DC 2=24V Volt DC 3=110V Volt AC 4=220V Volt AC</p>	