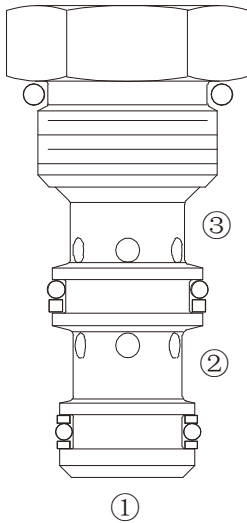


# HPC-10

## 液控单向阀

Direct-Acting, Poppet-Type,  
Cartridge Check Valve



### OPERATION

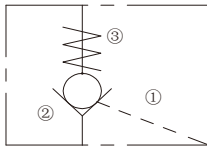
#### 工作原理

The valve allows flow from ② to ③, while normally blocking flow from ③ to ②. Flow will be allowed from ③ to ② when sufficient pressure is applied at ①. The cartridge has a 4:1 pilot ratio, meaning that at least a quarter of the load pressure held at ③ is required at ① to open the valve.

当在②口的压力超过开启压力，②到③开启；在反方向，③到②闭；当在①口所需的液压力达到负载的 1/4 时，阀芯打开，③到②通，液控比 4:1.

### SYMBOL

#### 机能符号



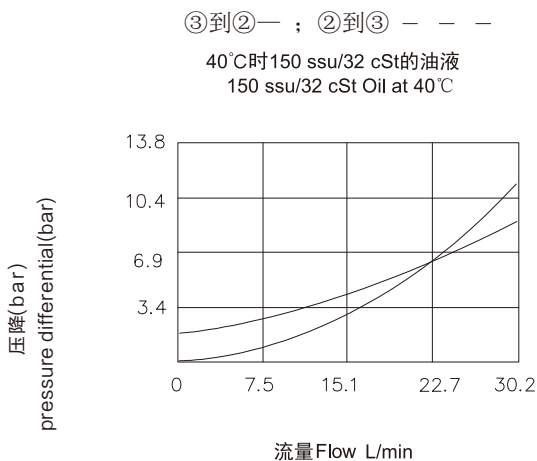
### FEATURES

#### 特性

- Hardened seat for long life
- Low leakage
- Optional sealed piston
- Industry common cavity
- Compact size
- 阀座经硬质处理，耐用
- 低泄漏
- 可选密封活塞
- 工业通用插孔
- 紧凑结构

### PRESSURE DROP VS.FLOW

#### 性能图



### SPECIFICATIONS

#### 技术参数

**最大工作压力 (Max. Operating Pressure):** 240 Bar

**流量 (Flow):** See PRESSURE DROP VS.FLOW graph.

**内泄漏 (Internal Leakage):**

③ to ② : 5 drops/min(0.25ml/min.) at 240bar

② to ① without sealed piston: 115 ml/min at 240bar

② to ① with sealed piston: zero leakage

**开启压力 (Cracking Pressures):** 1.7=1.7bar

4.8=4.8 bar

6.2=6.2 bar

**控制比 (Pilot Ratio):** 4:1

**介质温度 (Temperature):** -30 ° C to +120 ° C

**过滤 (Filtration):** ISO 19/17/14

**介质 (Fluids):** Mineral-based fluids.

For other fluid compatibility, consult factory.

矿物油 . 其它流体请咨询工厂

**插孔 (Cavity):** 10-3

**阀块材料 (Body Material):** 6061-T6 aluminum alloy rated at 207bar,  
Steel rated at 350bar

6061-T6, 允许使用最大压力 207Bar, 钢材允许最大压力 350bar

INSTALLATION DIMENSIONS  
安装尺寸

Unit=Millimeters

