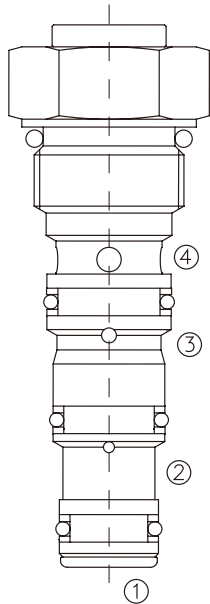


HDPC-08

液压锁

Dual Pilot-Operated Cartridge Check Valve



OPERATION

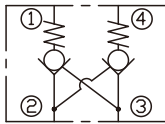
工作原理

The valve will block flow from ①to②, and from ④to③. Flow is allowed in the opposite direction when pressure is applied to port ②and/or③. The valve has a 2.5:1 pilot ratio, so at least 40 percent of the load pressure at port ①or④ is required at the pilot lines (port③or②) to open the flow passage to allow flow from port ①or④.

①到②, ④到③关闭; 在反方向, ②到①, ③到④打开; 此阀有2.5:1的控制比, 所以在②口或③口的压力超过负载压力的40%时, ①到②, ④到③打开。

SYMBOL

机能符号



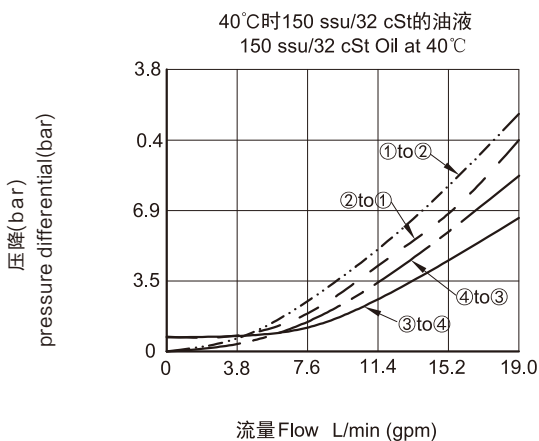
FEATURES

特性

- Hardened seat for long life
- Low leakage
- Industry common cavity
- Compact size
- 阀座经硬质处理, 耐用
- 低泄漏
- 工业通用插孔
- 紧凑结构

PRESSURE DROP VS.FLOW

性能图



SPECIFICATIONS

技术参数

- 最大工作压力(Max. Operating Pressure):** 207Bar
- 流量(Flow):** See PRESSURE DROP VS.FLOW graph.
- 内泄漏(Internal Leakage):** 5 drops/min max.(0.25 ml/min) at 207bar
- 开启压力(Crack Pressures):** 0.4=0.4 bar
3.4=3.4 bar
- 控制比(Pilot Ratio):** 2.5:1
- 介质温度(Temperature):** -30 °C to +120°C
- 过滤(Filtration):** ISO 19/17/14
- 介质(Fluids):** Mineral-based fluids
For other fluid compatibility, consult factory.
矿物油.其它流体请咨询工厂。

插孔 Cavity: 08-4

阀块材料(Body Material): 6061-T6 aluminum alloy rated at 207bar, Steel rated at 350bar
6061-T6,允许使用最大压力207Bar, 钢材允许最大压力350bar

INSTALLATION DIMENSIONS 安装尺寸

Unit=Millimeters

