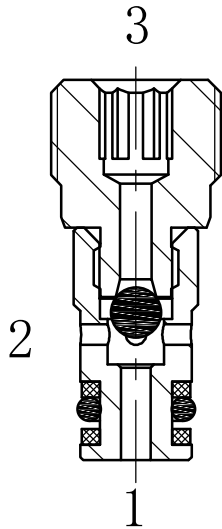


标准型 /standard

# HLS04-B30

梭阀

Ball-Type, Cartridge  
Shuttle Valve



## OPERATION

工作原理

The valve will allow flow from the higher pressure of 1 or 3 port to the 2 port .valve is commonly used to direct oil from the pressure side of a bidirectional hydraulic motor to a pressure-released hydraulic brake.

当①口超过③口的压力时，①到②打开；

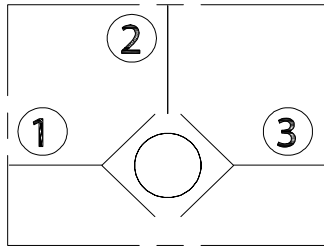
当③口超过①口的压力时，③到②打开。

一般用于自动开启液压马达制动器：

比较液压马达油口压力，压力高的油口与液压制动器释放端连接。

## SYMBOL

机能符号



## FEATURES

特性

Rapid response to load direction changes.

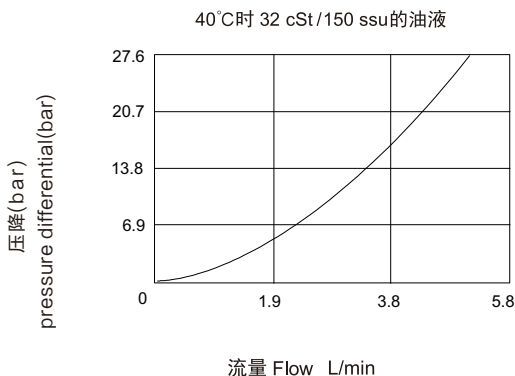
Compact size.

迅速响应负载方向变化。

结构紧凑。

## PRESSURE DROP VS.FLOW

性能图



## SPECIFICATIONS

技术参数

**最大工作压力** (Max. Operating Pressure ): 240Bar

**流量** Flow rate(L/min): 参见性能图 See Pressure Drop VS.Flow.

**内泄漏** Internal Leakage: 5drops/min max. at 210bar

**介质温度范围** (° C)Fluid temperature range(° C): -20 ° C to +70 ° C

**过滤** Filtration:

Critical Application – ISO 18/16/13

Non-Critical Application – ISO 19/17/14

**介质** Fluids: 矿物油。其它流体请咨询工厂。

Mineral-based fluids .

For other fluid compatibility,consult factory .

**插孔** Cavity:04-B3

**阀块材料** Body Material :

6061-T6 铝，允许使用最大压力 207bar

钢材允许使用最大压力 350bar

6061-T6aluminum alloy rated to 207bar

Steel rated to 350bar

INSTALLATION DIMENSIONS  
安装尺寸

Unit=Millimeters

