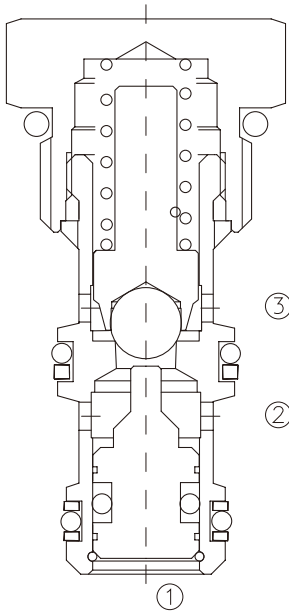


HPC-08

液控单向阀

Direct-Acting, Ball-Type, Cartridge Check Valve



OPERATION

工作原理

The valve allows flow from ② to ③, while normally blocking flow from ③ to ②. Flow will be allowed from ③ to ② when sufficient pressure is applied at ①. The cartridge has a 3:1 pilot ratio, meaning that at least one-third of the load pressure held at ③ is required at ① to open the valve.

当在②口的压力超过开启压力，②到③开启；在反方向，③到②关闭；当在①口所需的液压力达到负载的1/3时，阀芯打开，③和②通，液控比3:1。

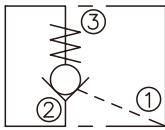
FEATURES

特性

- Hardened seat for long life
- Low leakage
- Optional sealed piston
- Industry common cavity
- Compact size
- 阀座经硬质处理，耐用
- 低泄漏
- 可选密封活塞
- 工业通用插孔
- 紧凑结构

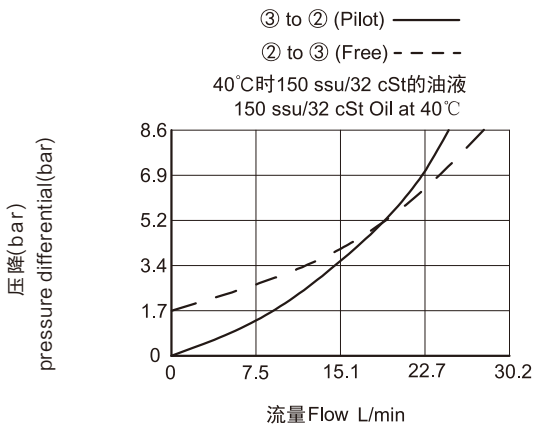
SYMBOL

机能符号



PRESSURE DROP VS.FLOW

性能图



SPECIFICATIONS

技术参数

- 最大工作压力(Max. Operating Pressure):** 240Bar
- 流量(Flow):** See PRESSURE DROP VS.FLOW graph.
- 内泄漏(Internal Leakage):**
 - ③ to ②: 5 drops/min (0.25 ml/min.) at 240bar
 - ② to ① without sealed piston: 115 ml/min at 240bar
 - ② to ① with sealed piston: zero leakage
- 开启压力(Crack Pressures):** 1.7=1.7 bar
4.8=4.8 bar
6.2=6.2 bar

控制比(Pilot Ratio): 3:1

介质温度(Temperature): -30 °C to +120°C

过滤(Filtration): ISO 19/17/14

介质(Fluids): Mineral-based fluids

For other fluid compatibility, consult factory.
矿物油.其它流体请咨询工厂。

插孔 Cavity: 08-3

阀块材料(Body Material): 6061-T6 aluminum alloy rated at 207bar, Steel rated at 350bar

6061-T6,允许使用最大压力207Bar，钢材允许最大压力350bar

INSTALLATION DIMENSIONS 安装尺寸

Unit=Millimeters

