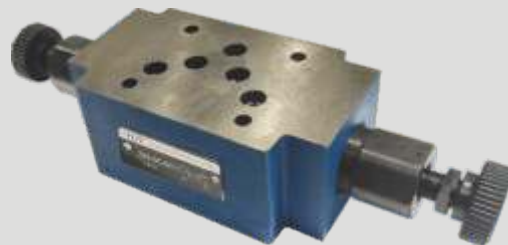
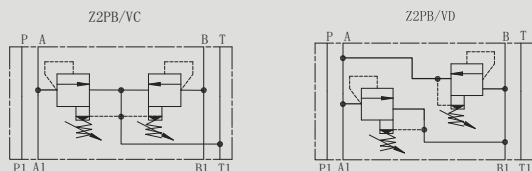


## Z2PB10型叠加式溢流阀

### Z2PB10 SERIES MODULAR RELIEF VALVES

#### 符号 SYMBOL

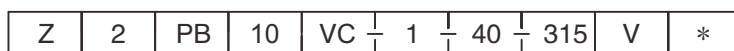


Z2PB10 型压力控制阀是叠加板结构的先导式溢流阀。

Pressure relief valves of Z2PB10 series are pilot operated style modular valves.

#### ▶ 技术参数 Technical data

通径 Size		10
工作压力 (MPa) Operating pressure (MPa)		31.5
流量 (L/min) Flow rate (L/min)		100
油温范围 (°C) Oil temperature range (°C)		-20 ~ 70
重量 (千克) Weight (KGS)	Z2PB	3.1
阀体 (材料) 表面处理 Valve body (Material) Surface treatment		铸件 表面磷化处理 casting phosphating surface
油液清洁度 /Oil cleanliness		NAS1638 9 级和 ISO4406 20/18/15 级 NAS1638 class 9 and ISO4406 class 20/18/15



叠加式  
Modular type

2=双溢流阀(只有 VC,VD)  
2=Two relief cartridges  
(Only for VC,VD)

型号  
Model

通径:10  
Size:10

溢流方向 Relief from  
VC:A→T B→T  
VD:A→B B→A

附加说明  
For further details

无 = 丁晴橡胶  
V = 氟橡胶

No code=NBR seals for petroleum oils  
V=FPM seals for phosphate ester

Pressure range 压力等级  
50 = 5Mpa  
100 = 10Mpa  
200 = 20Mpa  
315 = 31.5Mpa

系列号  
Series number

1=手柄  
1=handwheel

▶ Z2PB10VC VD 外形尺寸和安装 Z2PB10VC VD External Dimensions and Fittings

