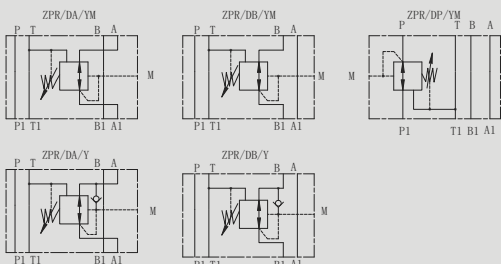


ZPR-D 型叠加式直动减压阀

ZPR-D SERIES DIRECT MODULAR REDUCING VALVES

符号 SYMBOL



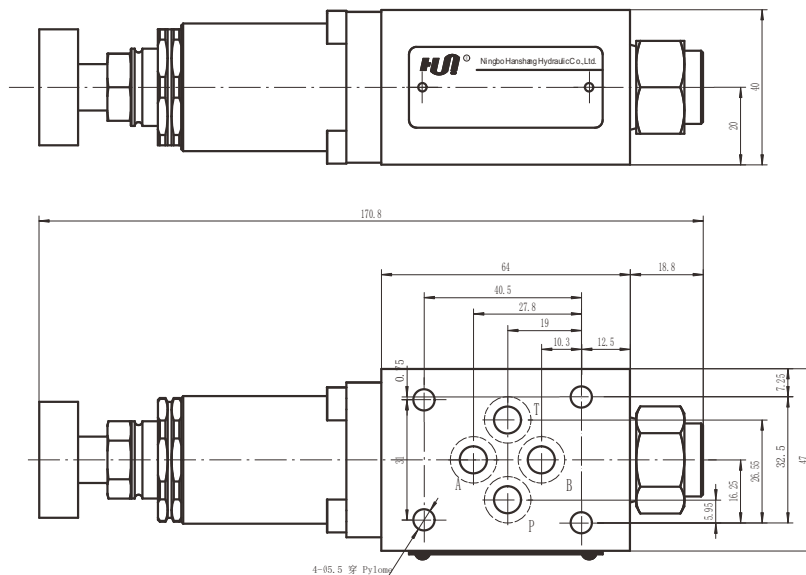
ZPR-D型减压阀是叠加式直动三通减压阀，具有二次压力保护装置，主要用来降低系统某一回路的压力。

ZPR-D series are 3-way direct operated pressure reducing valves, which are used to reduce the pressure in a certain circuit lower than of the main circuit.

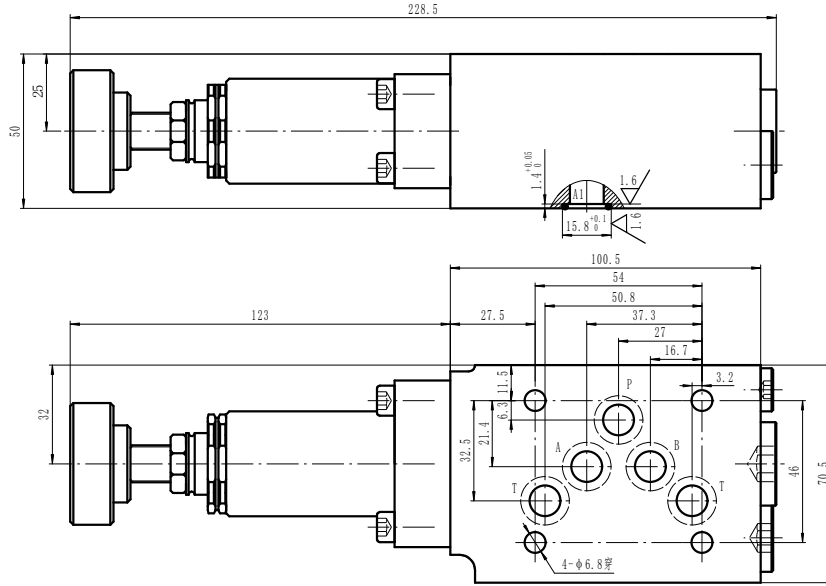
▶ 技术参数 Technical data

通径 Size	6	10
工作压力 (Mpa) Operating pressure (Mpa)	31.5	31.5
次工作压力 (Mpa) Second working pressure (Mpa)	21	21
背压 (MPa) Back pressure (MPa)	6	6
流量 (L/min) Flow rate (L/min)	30	60
介质温度 (°C) Fluid temperature (°C)	-20 ~ 80	-20 ~ 80
重量 (千克) Weight (KGS)	1.3	2.8
阀体 (材料) 表面处理 Valve body (Material) Surface treatment	铸件 表面磷化处理 casting phosphating surface	
油液清洁度 /Oil cleanliness	NAS1638 9 级和 ISO4406 20/18/15 级 NAS1638 class 9 and ISO4406 class 20/18/15	

▶ ZPR6D 外形尺寸和安装 ZPR6D External Dimensions and Fittings



▶ ZPR10 外形尺寸和安装 ZPR10 External Dimensions and Fittings



Z	PR	6	D	A	2	30	25	Y	M	*
---	----	---	---	---	---	----	----	---	---	---

叠加式
Modular
型号
Model

通径 6;10
Size 6;10

直动式
Direct type

控制油口
A=A 油口
B=B 油口
P=P 油口
Pilot oil port
A=A oil port B=B oil port P=P oil port

1 = 手轮
2 = 调节螺栓
1=Adjustable handwheel
2=Adjustable screw

附加说明
For further details

无: 带单向阀
M=不带单向阀
No code=With check valve
M=Without check valve
Y=内部控制外泄
Y=Internal pilot;external drain

压力等级
Pressure range
25 = 2.5Mpa
75 = 7.5Mpa
150 = 15Mpa
210 = 21Mpa

系列号
Series number