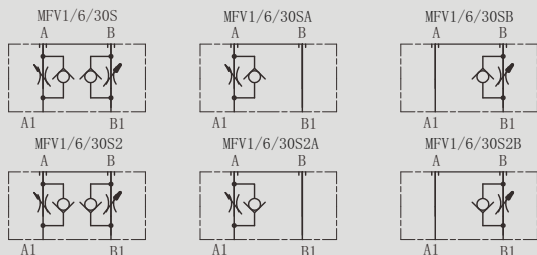


# MFV 型叠加式单向节流阀

## MFV SERIES MODULAR THROTTLE CHECK VALVES

### 符号 SYMBOL



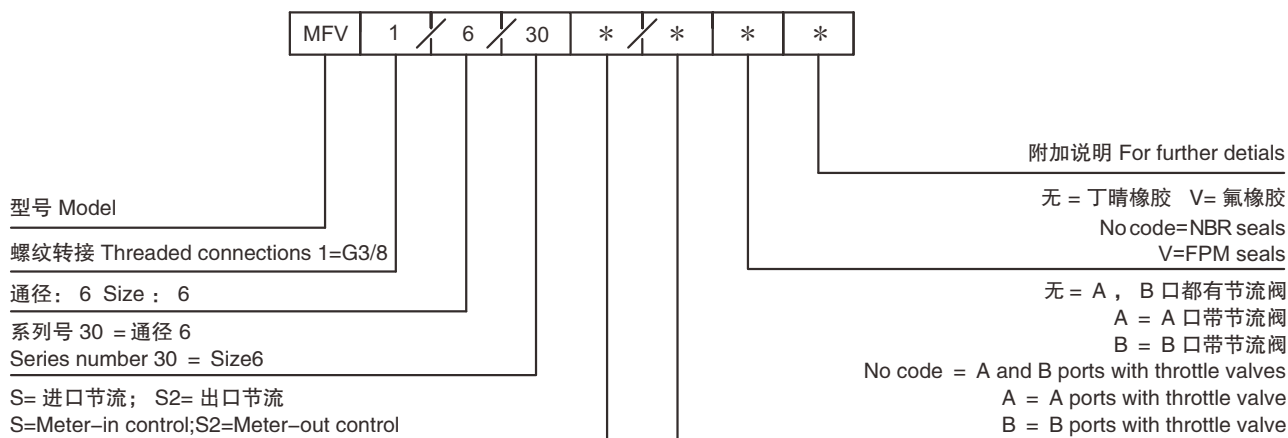
叠加式节流阀通过改变节流口断面大小来调节油路流量，从而实现流量控制。

MFV series modular check/throttle valves are used to restrict flow in one direction while allowing free-flow .

### ▶ 技术参数 Technical data

型号 Model	MFV
最大流量 / Max flow rate (L/min)	40
工作压力 / Operating pressure (MPa)	31.5
阀体 ( 材料 ) 表面处理 Valve body ( Material ) Surface treatment	铸件表面磷化处理 casting phosphating surface
油液清洁度 Oil cleanliness	NAS 1638 级和 ISO4406 20/18/15 级 NAS class 1638 和 ISO4406 class 20/18/15

### ▶ 订单选型 Ordering Details



外形尺寸和安装 External Dimensions and Fittings

