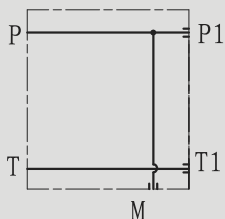


泵侧模块 PTMWE6-G 3/8

PUMP SIDE INLET ELEMENTS PTMWE6

符号 SYMBOL



▶ 技术参数 Technical data

| | |
|-------------------------------------|--|
| 最大流量 (L/min) Max.flow rate (L/min) | 50 |
| 工作压力 (Mpa) Operating pressure (Mpa) | 25 |
| 油液清洁度 / Oil cleanliness | NAS 1638 级和 ISO4406 20/18/15 级 NAS class 1638 级和 ISO4406 class 20/18/15 |

▶ 外形尺寸和安装 External Dimensions and Fittings

