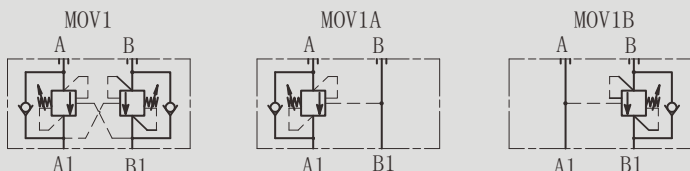


## MOV 型叠加式平衡阀

### MOV SERIES MODULAR COUNTERBALANCE VALVES FOR OPEN CENTER

#### 符号 SYMBOL



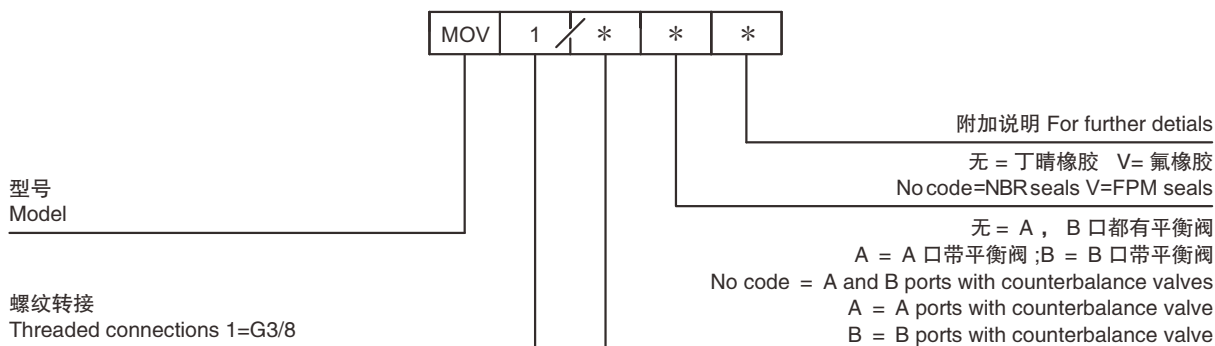
MOV 型叠加式平衡阀通过对A口和B口的控制来调节进出执行器的流量,从而达到对负载进行动态与静态的控制,这类阀包含两部分,每部分都由一个单向阀和一个带先导相互控制的溢流阀组成,单向阀允许油液正向自由流向执行器,反向则截止,先导压力相互交叉控制,溢流阀的设定压力被比例的减小,直到阀口被打开允许油液反向流动,A1口或B1口的背压会附加到弹簧设定压力上。

It provides static and dynamic control of load by regulating the flow IN and OUT of the actuator, through ports A and B. This valve module includes 2 sections, each one composed by a check and a relief valve pilot assisted by pressure in the opposite line: the check section allows free flow into the actuator, then holds the load against reverse movement; with pilot pressure applied at the line across, the pressure setting of the relief is reduced in proportion to the stated ratio until opening and allowing controlled reverse flow. Back-pressure at A1 or B1 is additive to the pressure setting in all functions.

#### ▶ 技术参数 Technical data

|   |  |
|---|--|
| 型号 Model  | MOV  |
| 最大流量 / Max flow rate (L/min)                            | 40   |
| 工作压力 / Operating pressure (MPa)                         | 31.5   |
| 先导比 Pilot ratio   | 4.3:1  |
| 阀体 (材料) 表面处理<br>Valve body (Material) Surface treatment | 铸件表面磷化处理 casting phosphating surface                                   |
| 油液清洁度 Oil cleanliness                                   | NAS 1638 级和 ISO4406 20/18/15 级 NAS class 1638 和 ISO4406 class 20/18/15 |

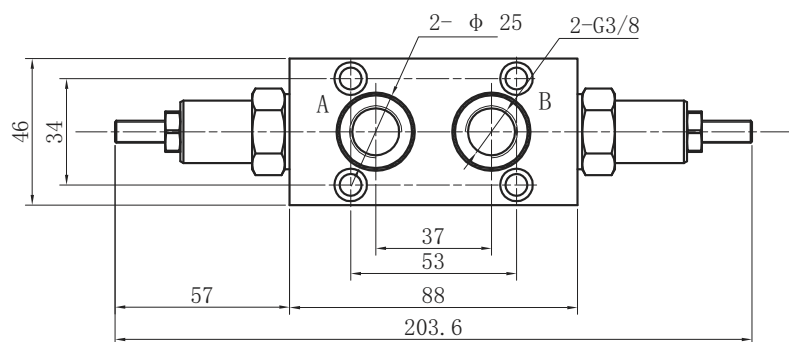
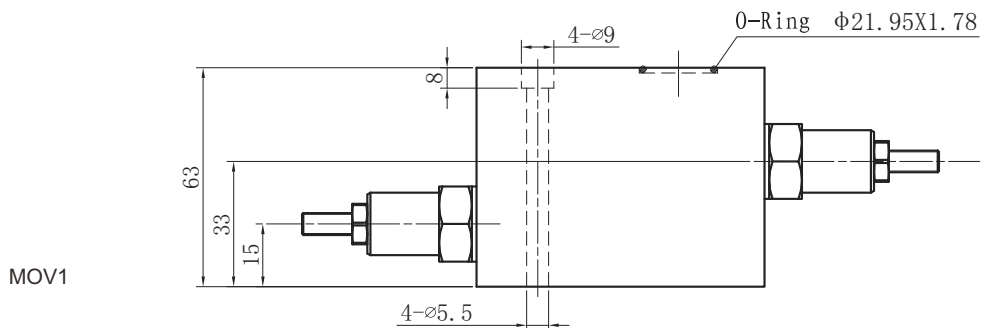
#### ▶ 订单选型 Ordering Details



型号  
Model

螺纹转接  
Threaded connections 1=G3/8

外形尺寸和安装 External Dimensions and Fittings



MOV1A

MOV1B

