

4DWG6-EL 型带应急手动装置的电磁换向阀

4DWG6-EL SERIES SOLENOID OPERATED DIRECTIONAL CONTROL VALVES WITH EMERGENCY CONTROL LEVER



4DWG6-EL 型方向控制阀是可用手柄操纵的电磁换向阀，用以控制油液的开启、停止和换向。

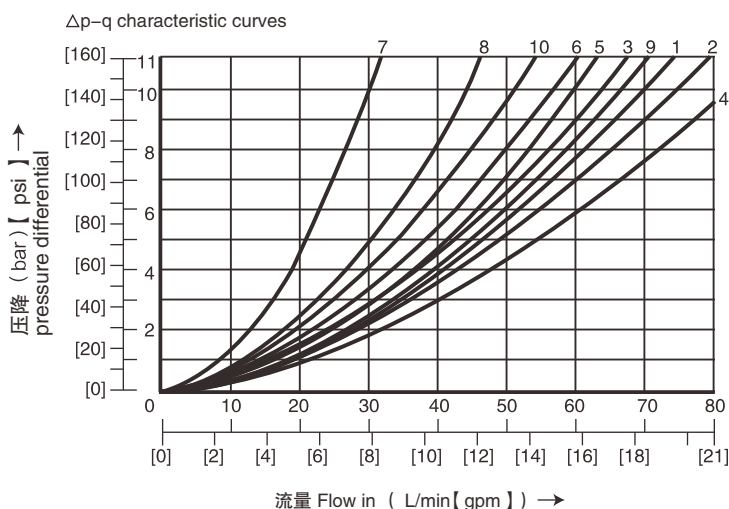
4DWG6-EL series directional control valves are solenoid operated directional spool valves, with emergency control lever, these valves are used to the start, stop and direct flow.

▶ 技术参数 Technical data

通径 Size		6
最大流量 (L/min)Max.flow rate(L/min)		60
工作压力 (MPa)Operating pressure(MPa)		A、B、P 油口 31.5 / A、B、P oil port 31.5 T 油口 16 / T oil port 16
重量 (千克) Weight(KGS)	单头 valve with one solenoid	2.2
	双头 valve with two solenoids	2.8
阀体 (材料) 表面处理 Valve body (Material) Surface treatment		铸件表面磷化处理 casting phosphating surface

▶ 特性曲线 (在使用 HLP46 测量, $\nu_{\text{油}} (\nu = 190 \text{ SUS}) = 40^\circ\text{C} \pm 5^\circ\text{C} [104^\circ\text{F} \pm 9^\circ\text{F}]$ 测得)

Characteristic curves (measured with HLP46, $\nu_{\text{oil}} = 40^\circ\text{C} \pm 5^\circ\text{C} [104^\circ\text{F} \pm 9^\circ\text{F}]$)



机能符号 Spool symbol	流向 Flow direction			
	P-A	P-B	A-T	B-T
A; B	3	3	-	-
C	1	1	3	1
D; Y	5	5	3	3
E	3	3	1	1
F	1	3	1	1
T	10	10	9	9
H	2	4	2	2
J; Q	1	1	2	1
L	3	3	4	9
M	2	4	3	3
P	3	1	1	1
R	5	5	4	-
V	1	2	1	1
W	1	1	2	2
U	3	3	9	4
G	6	6	9	9

7 阀芯机能符号 R 处于控制位置 B→A

7 Spool symbol "R" in spool position B→A

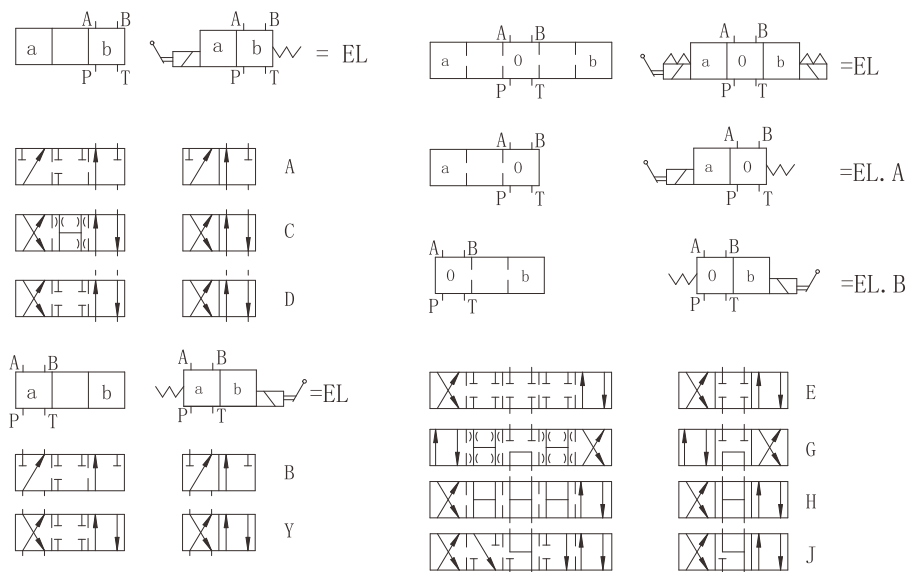
8 阀芯机能符号 G 和 T 在中心位置

8 Spool symbol "G" and "T" in central position

9 阀芯机能符号 H 和 T 在中心位置 P→T

9 Spool symbol "H" and "T" in central position P→T

机能符号 Spool symbols

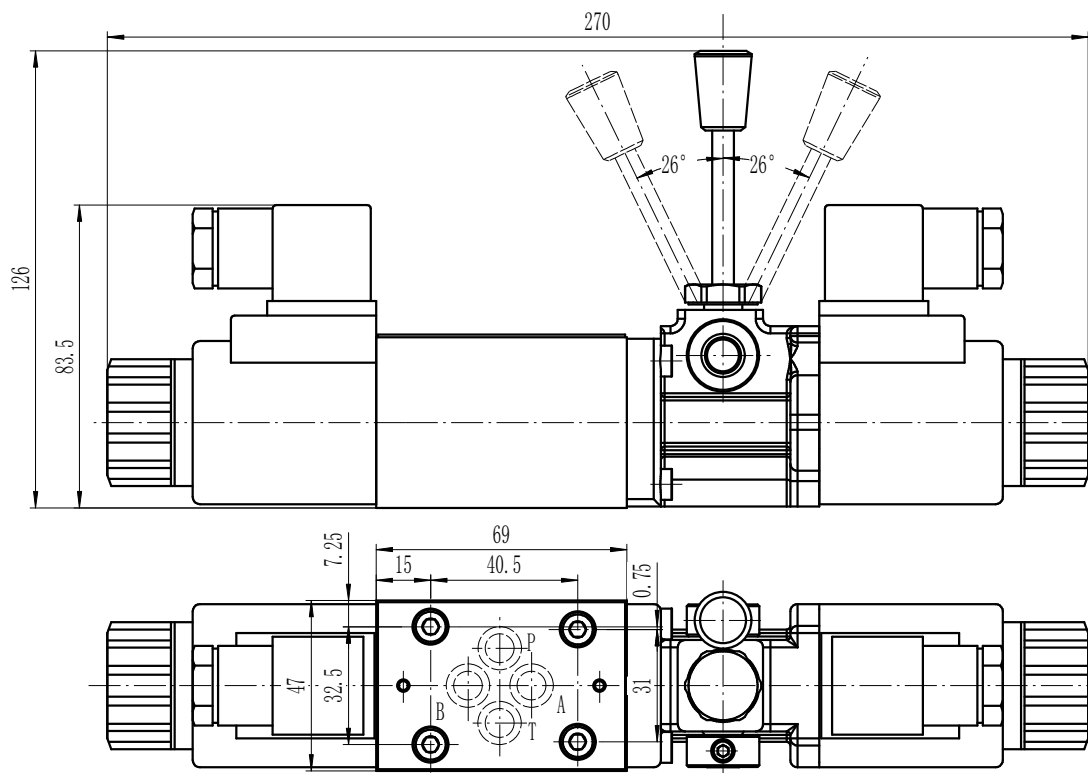


示例：阀芯E带阀芯位置“a”
订货型号...EA...

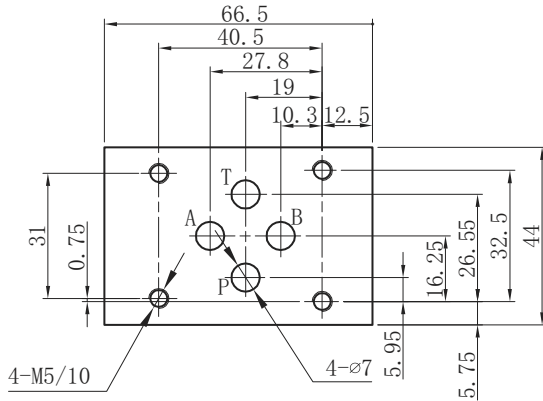
For example:
the spool symbol "E" with position "a"
Ordering code ...EA...

Catalogue 2022

DWG6-EL 外型尺寸 DWG6-EL Overall Dimensions



DWG6-EL 底板安装尺寸 DWG6-EL Subplate Installation Dimensions



Z1DS6,Z2DS6,Z2FDS6,ZPB6,ZPR6
安装尺寸相同

Installations are the same with
Z1DS6,Z2DS6,Z2FDS6,ZPB6,ZPR6

4	DWG	6	-EL	E	60	/	*	DC24	N	Z5L	/	*	*	*
<p>3= 三油口 4= 四油口 3=3-way 4=4-way</p>		<p>For further details 附加说明 无 = 丁晴橡胶 V= 氟橡胶 No code=NBR seals V=FPM seals</p>		<p>无 = 无插装节流器 P 口节流 B0.8= 节流孔径 0.8 B10= 节流孔径 1.0; B12= 节流孔径 1.2 No code=Without throttle insert P port with throttle insert B08= throttle \varnothing 0.8mm B10= throttle \varnothing 1.0mm B12= throttle \varnothing 1.2mm</p>		<p>Z5L= 带灯大方形插头 ER= 德意志插头 Z5L= Large quadrate plug with light ER=Deutsch Connector</p>		<p>N= 有故障检查按钮 N =With concealed manual override</p>						
<p>直径 6 Size 6</p>														
<p>带手动换向模块 With Emergency Control Lever</p>														
<p>机能符号 Spool type</p>														
<p>系列号 60=60螺纹连接电磁铁 Series 60=60 Solenoid coils with thread connection</p>														
<p>无=弹簧复位; No code=With spring return;</p>														
<p>电压 Voltage DC12;DC24 ;AC110;AC220</p>														