

4DWG6型电磁换向阀

4DWG6 SERIES SOLENOID OPERATED DIRECTIONAL CONTROL VALVES



DWG6 型方向控制阀是电磁铁操纵的换向阀，用以控制油液的开启、停止和换向。

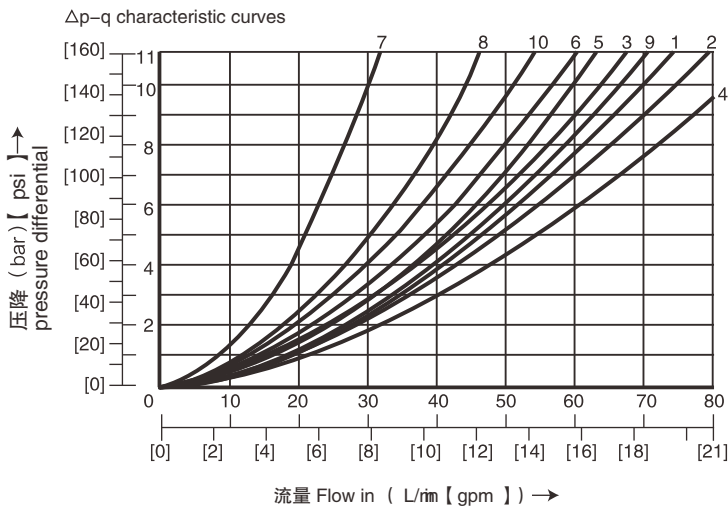
DWG6 series directional control valves are solenoid operated directional spool valves ,these valves are used to the start ,stop and direct flow.

▶ 技术参数 Technical data

通径 Size		6
最大流量 (L/min)Max.flow rate(L/min)		60
工作压力 (MPa)Operating pressure(MPa)		A、B、P 油口 31.5 / A、B、P oil port 31.5 T 油口 16 / T oil port 16
重量 (千克) Weight(KGS)	单头 valve with one solenoid	1.6
	双头 valve with two solenoids	2.2
阀体 (材料) 表面处理 Valve body (Material) Surface treatment		铸件 表面磷化处理 casting phosphating surface

▶ 特性曲线 (在使用 HLP46 测量, $\nu_{油} (\nu = 190 \text{ SUS}) = 40 \text{ }^\circ\text{C} \pm 5 \text{ }^\circ\text{C} [104 \text{ }^\circ\text{F} \pm 9 \text{ }^\circ\text{F}]$ 测得)

Characteristic curves (measured with HLP46 , $\nu_{oil} = 40 \text{ }^\circ\text{C} \pm 5 \text{ }^\circ\text{C} [104 \text{ }^\circ\text{F} \pm 9 \text{ }^\circ\text{F}]$)



机能符号 Spool symbol	流向 Flow direction			
	P - A	P - B	A - T	B - T
A; B	3	3	-	-
C	1	1	3	1
D; Y	5	5	3	3
E	3	3	1	1
F	1	3	1	1
T	10	10	9	9
H	2	4	2	2
J; Q	1	1	2	1
L	3	3	4	9
M	2	4	3	3
P	3	1	1	1
R	5	5	4	-
V	1	2	1	1
W	1	1	2	2
U	3	3	9	4
G	6	6	9	9

7 阀芯机能符号 R 处于控制位置 B → A

7 Spool symbol "R" in spool position B → A

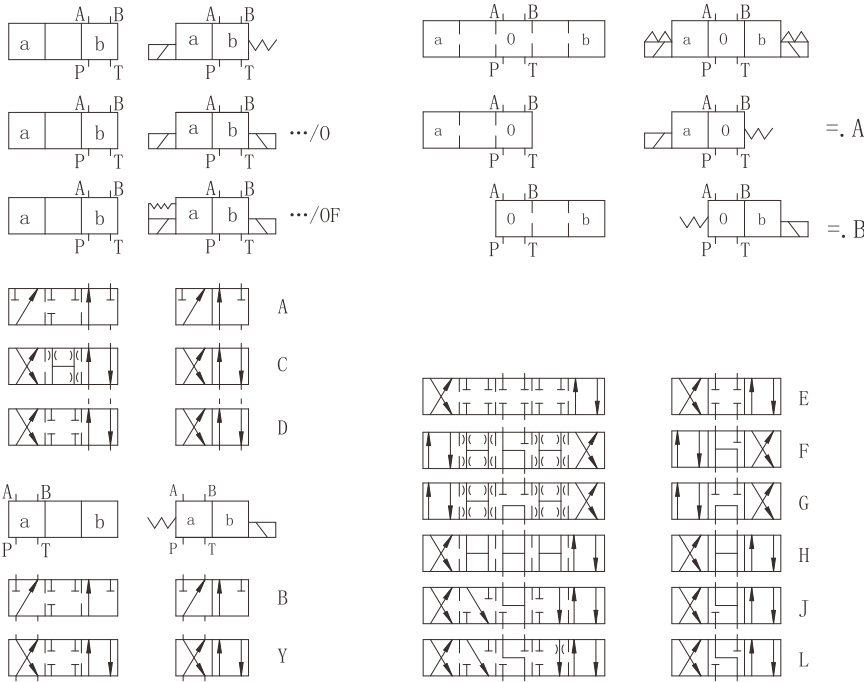
8 阀芯机能符号 G 和 T 在中心位置

8 Spool symbol "G" and "T" in central position

9 阀芯机能符号 H 和 T 在中心位置 P → T

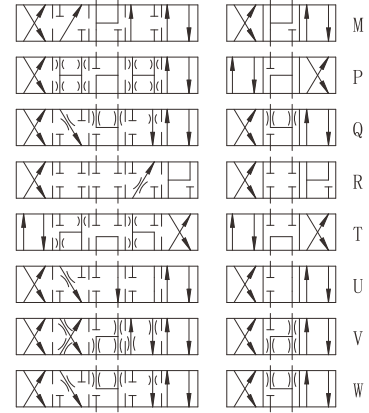
9 Spool symbol "H" and "T" in central position P → T

机能符号 Spool symbols

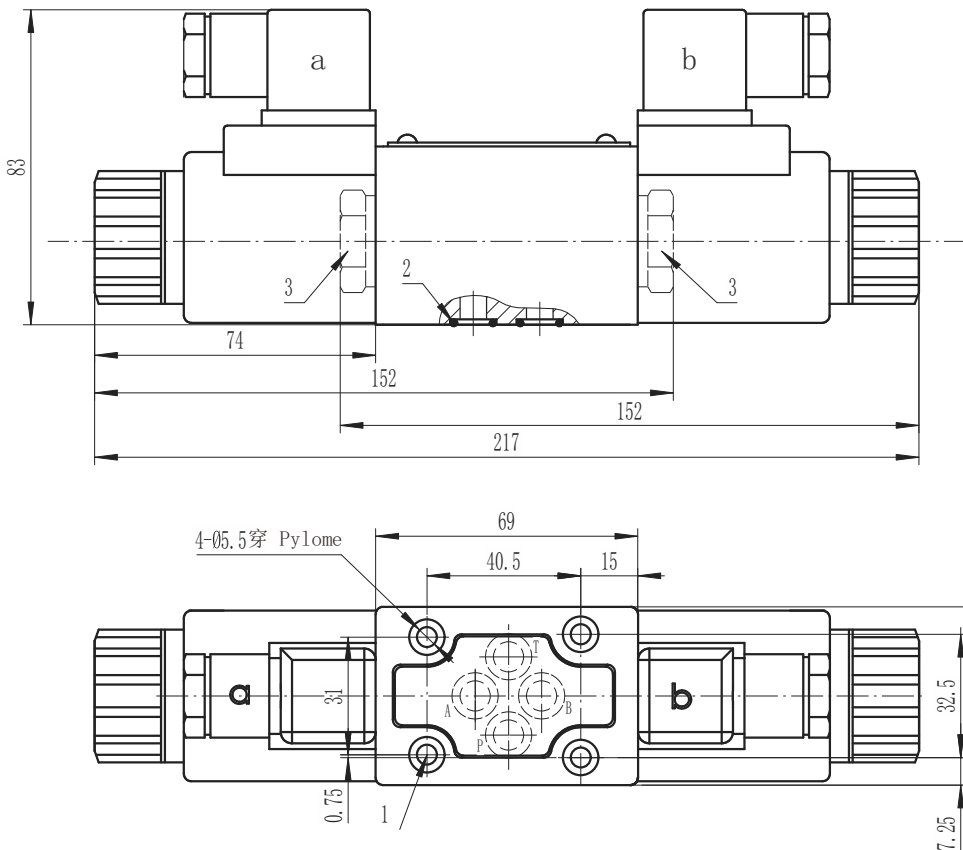


示例：阀芯E带阀芯位置“a”
订货型号...EA...

For example:
the spool symbol "E" with position "a"
Ordering code ...EA...



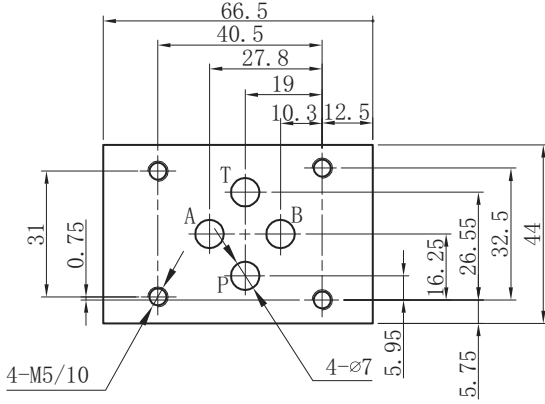
DWG6 外型尺寸 DWG6 Subplate Overall Dimensions



- 1、阀固定螺丝：
4个 M5X45GB/T70.1-12.9 级
拧紧扭矩 Ma=8.9Nm
- 2、O型圈 ϕ 12.3X1.9
- 3、用于1个电磁铁阀的堵头

- 1. Valve's set screw
4 of M5 \times 45 GB/T70.1-12.9
Tightening torque Ma=8.9Nm.
- 2. O-ring ϕ 12.3 \times 1.9
- 3. Plug screw for valves with one solenoid.

4DWG6 底板安装尺寸 DWG6 Subplate Installation Dimensions



Z1DS6,Z2DS6,Z2FDS6,ZPB6,ZPR6
安装尺寸相同

Installations are the same with
Z1DS6,Z2DS6,Z2FDS6,ZPB6,ZPR6

4	DWG	6	E	60	*	DC24	N	Z5L	*	*	*
---	-----	---	---	----	---	------	---	-----	---	---	---

3= 三油口
4= 四油口
3=3-way
4=4-way

通径 6 Size 6

机能符号 Spool type

系列号 60=60螺纹连接电磁铁
Series 60=60 Solenoid coils with
thread connection

无=弹簧复位;O=无复位弹簧;OF=带定位器
No code=With spring return;O=Without spring return
OF=Without spring return with detent

电压 Voltage
DC12;DC24 ;AC110;AC220

For further details 附加说明

无 = 丁晴橡胶 V= 氟橡胶
No code=NBR seals
V=FPM seals

无 = 无插装节流器
P 口节流 B0.8= 节流孔径 0.8
B10= 节流孔径 1.0; B12= 节流孔径 1.2
No code=Without throttle insert
P port with throttle insert
B08= throttle ϕ 0.8mm
B10= throttle ϕ 1.0mm
B12= throttle ϕ 1.2mm

Z5L= 带灯大方形插头
ER= 德意志插头
Z5L= Large quadrate plug with light
ER=Deutsch Connector

N= 有故障检查按钮
N =With concealed manual override