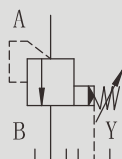


PB6K型插装式先导溢流阀

PB6K SERIES PLUG-IN PILOT CONTROLLED PRESSURE RELIEF VALVES

符号 SYMBOL

PB 6 K/...Y



PB6K 型溢流阀是插装式先导溢流阀，用于限制液压系统压力。

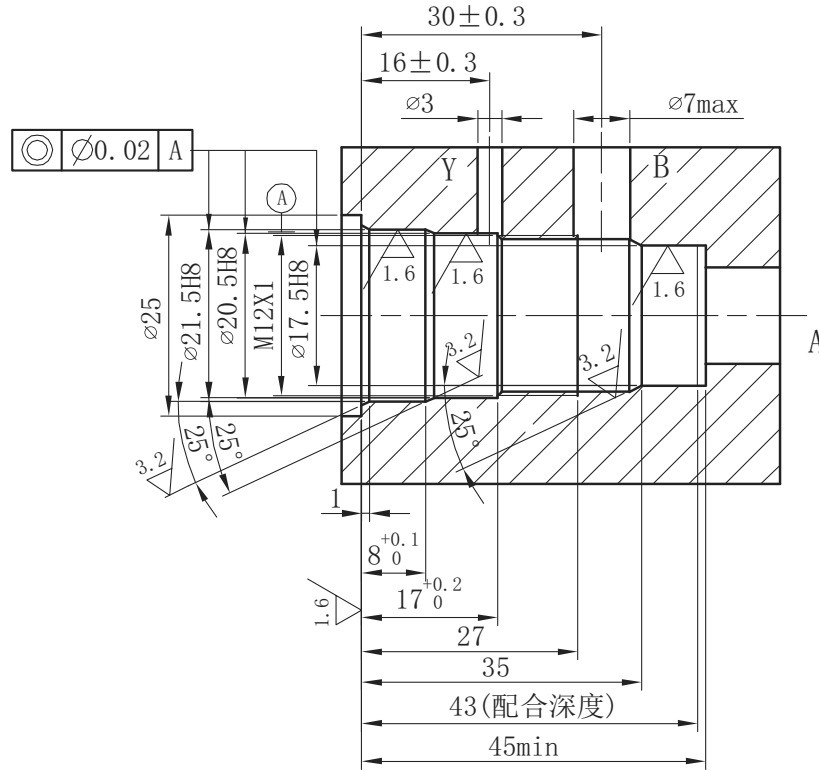
PB6K series are pilot operated relief valves used to limit pressure in a hydraulic system.

▶ 技术参数 Technical data

通径 Size	6
工作压力 (Mpa) Operating pressure(Mpa)	31.5
调节压力 (Mpa) Set pressure(Mpa)	至 5, 10, 20, 31.5/Up to 5, 10, 20, 31, 5
最大流量 (L/min) Max .flow rate(L/min)	60
介质温度 (°C) Fluid temperature(°C)	-20 ~ 70
过滤精度(m) Filtration accuracy(m)	25
重量 (千克) Weight(KGS)	0.22
阀体 (材料) 表面处理 Valve body (Material) Surface treatment	钢件 表面发黑处理 Steel Body Surface Black Oxide
油液清洁度 /Oil cleanliness	NAS1638 9 级和 ISO4406 20/18/15 级 NAS1638 class 9 and ISO4406 class 20/18/15

安装尺寸 Installation dimensions

PB6K.../...Y



PB	6	K	1	40	100	Y	*	*
----	---	---	---	----	-----	---	---	---

型号 Model

通径:6 Size:6

K = 插装式连接
K = Cartridge valve

1=手柄; 2 = 带保护调节螺栓
1=Rotary handle
2=Adjustable screw with protective cap

40=40系列适用于6, 10;
40=40series are suitable for 6,10;

For further details 附加说明

无 = 丁晴橡胶 V= 氟橡胶
No code = NBR seals
V=FPM seals

Y= 先导控制油内供外排
Y = Internally pilot, externally drained

压力等级 Pressure rating
50=5 MPa 100=10 MPa 200=20 MPa 315=31.5 Mpa