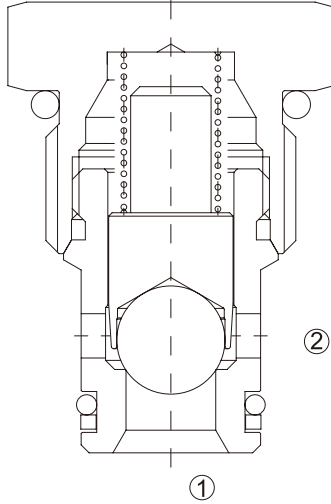


HCV-10-B

单向阀 钢球型

Direct-Acting, Ball-Type, Cartridge Check Valve



OPERATION

工作原理

Pressure at ① overcomes the spring-bias ball and allows free flow from ① to ②. Flow in the opposite direction, from ② to ①, is blocked by the ball.

当在①口的压力超过开启压力，①到②开启；反方向，②到①关闭。

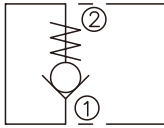
FEATURES

特性

- Hardened seat for long life
- Low leakage
- Ball for positive shut-off
- Industry common cavity
- Compact size
- 阀座经硬质处理，耐用
- 低泄漏
- 快速关闭
- 工业通用插孔
- 紧凑结构

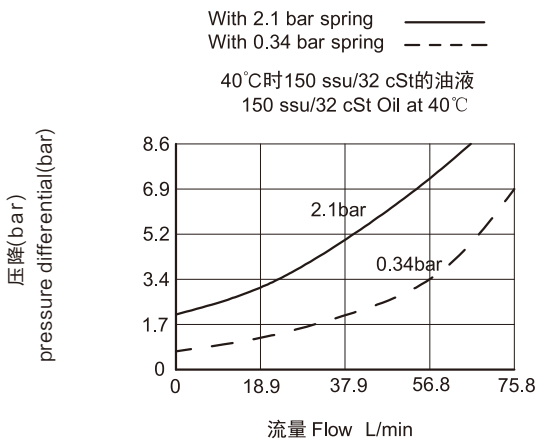
SYMBOL

机能符号



PRESSURE DROP VS.FLOW

性能图



SPECIFICATIONS

技术参数

- 最大工作压力(Max. Operating Pressure):** 240Bar
- 流量(Flow):** See PRESSURE DROP VS.FLOW graph.
- 内泄漏(Internal Leakage):** 3 drops/min max.at 240bar
- 开启压力(Crack Pressures):** 0.34=0.34 bar
- 1.0=1.0 bar
- 2.1=2.1 bar
- 4.8 =4.8 bar
- 6.9=6.9 bar

介质温度(Temperature): -30 °C to +120°C

介质(Fluids): Mineral-based fluids

For other fluid compatibility, consult factory.
矿物油.其它流体请咨询工厂。

插孔 Cavity: 10-2

阀块材料(Body Material): 6061-T6 aluminum alloy rated at 207bar, Steel rated at 350bar

6061-T6,允许使用最大压力207Bar, 钢材允许最大压力350bar

INSTALLATION DIMENSIONS 安装尺寸

Unit=Millimeters

