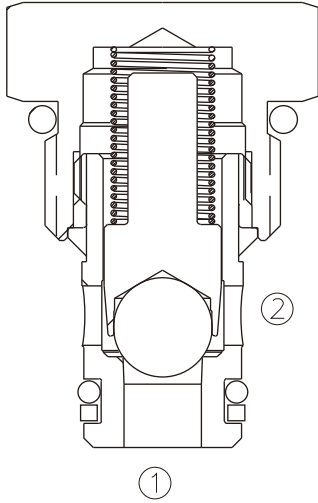


# HCV-08-B

## 单向阀 钢球型

Direct-Acting, Ball-Type, Cartridge Check Valve



### OPERATION

#### 工作原理

Pressure at ① overcomes the spring-bias ball and allows free flow from ① to ②. Flow in the opposite direction, from ② to ①, is blocked by the ball.

当在①口的压力超过开启压力，①到②开启；  
反方向，②到①关闭。

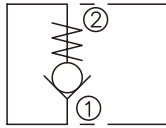
### FEATURES

#### 特性

- Hardened seat for long life
- Low leakage
- Ball for positive shut-off
- Industry common cavity
- Compact size
- 阀座经硬质处理，耐用
- 低泄漏
- 快速关闭
- 工业通用插孔
- 紧凑结构

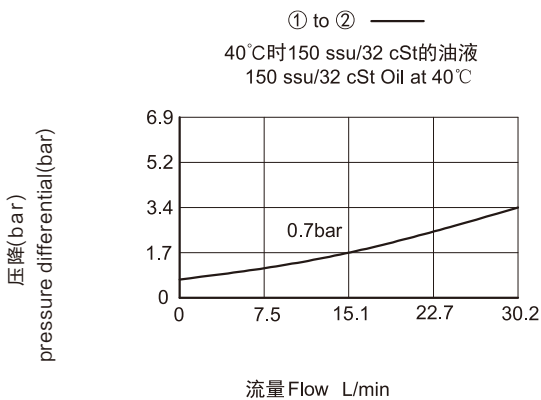
### SYMBOL

机能符号



### PRESSURE DROP VS.FLOW

#### 性能图



### SPECIFICATIONS

#### 技术参数

- 最大工作压力(Max. Operating Pressure):** 240Bar
- 流量(Flow):** See PRESSURE DROP VS.FLOW graph.
- 内泄漏(Internal Leakage):** 3 drops/min max.at 240bar
- 开启压力(Crack Pressures):** 0.3=0.3bar  
0.7=0.7bar  
2.1=2.1bar  
6.9=6.9bar

**介质温度(Temperature):** -30 °C to +120°C

**介质(Fluids):** Mineral-based fluids

For other fluid compatibility, consult factory.

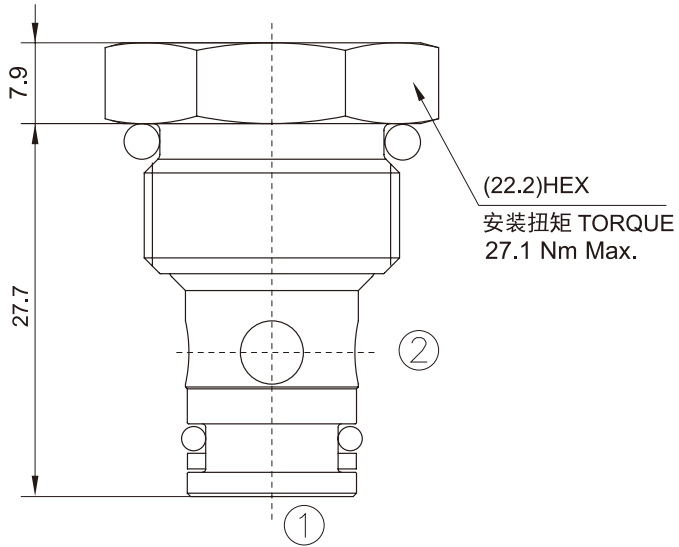
矿物油,其它流体请咨询工厂。

**插孔 Cavity:** 08-2

**阀块材料(Body Material):** 6061-T6 aluminum alloy rated at 207bar, Steel rated at 350bar

6061-T6,允许使用最大压力207Bar, 钢材允许最大压力350bar

# INSTALLATION DIMENSIONS 安装尺寸



Unit=Millimeters

