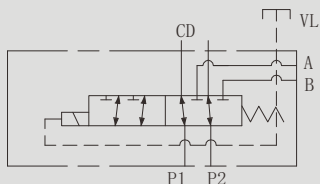


## MOP.06.6 多回路选择阀

## MOP.06.6 FLOW DIVERTERS

## 符号 SYMBOL



MOP.06.6管式连接的多回路选择阀，最多可以5个元件连接在一起，供给6个回路工作。这种阀可以以最小的压力损失控制系统的油路。

The stackable circuit selector valves, type MOP.06.6, allows one single drive of 6 users with 5 elements connected in series. As they are moved from high performances solenoids they don't need the external drainage .

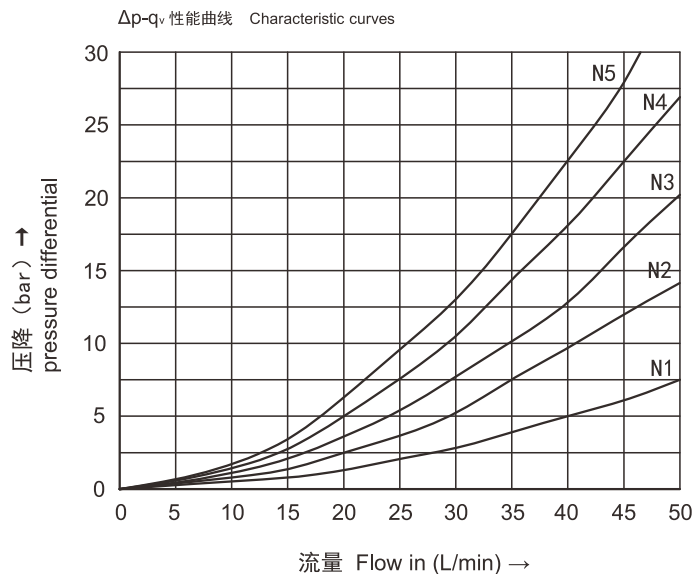
This valves can manage high hydraulic powers with a minimal pressure drop.

▶ 技术参数 Technical data

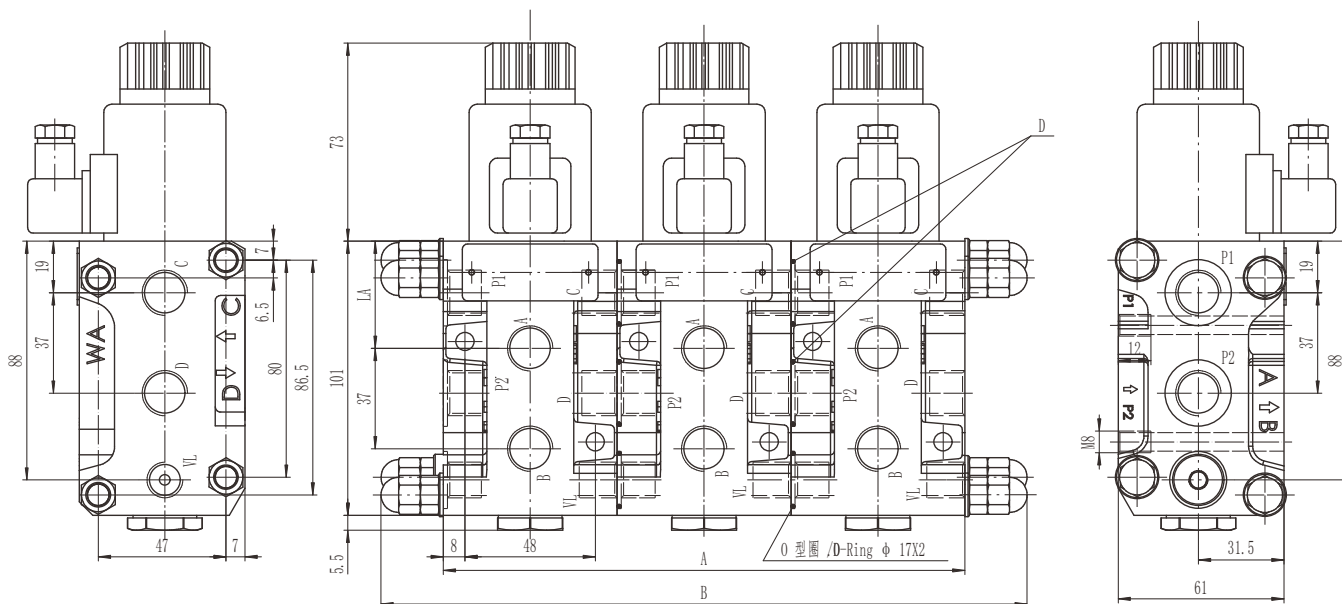
型号 Model	MOP.06.6
最大流量 ( L/min ) Max Flow rate ( L/min )	50
最大工作压力 (Mpa) Max operating pressure (MPa)	25
阀体 ( 材料 ) 表面处理 Valve body ( Material ) Surface treatment	( 铸件 ) 表面磷化处理 / ( casting ) phosphating surface
油液清洁度 Oil cleanliness	NAS1638 9 级和 ISO4406 20/18/15 级 NAS1638 class 9 and ISO4406 class 20/18/15

▶ 特性曲线 ( 在使用 HLP46 ,  $\vartheta_{\text{油}}=40\text{ }^{\circ}\text{C} \pm 5\text{ }^{\circ}\text{C}$  时测得 )

Characteristic curves ( measured with HLP46 ,  $\text{Voil}=40\text{ }^{\circ}\text{C} \pm 5\text{ }^{\circ}\text{C}$  )



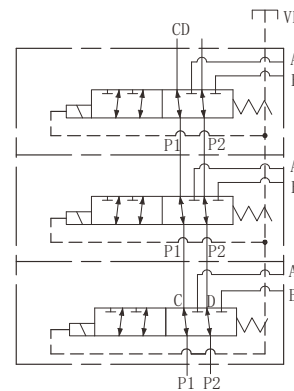
安装尺寸 Installation Dimensions



LA=39.5(G3/8,M18X1.5)  
38.5(SAE8)  
37.5(G1/2,M22X1.5)

D.O 型圈 / D.O-Ring:  
M18X1.5/G3/8=  $\phi$  21X2  
M22X1.5/G1/2=  $\phi$  23.5X2  
SAE8=  $\phi$  26X2

元件 elements	通路 way	A	B
个数 No. of		长度 (mm) Lengths (mm)	
1	6	64	-
2	8	128	174
3	10	192	238
4	12	256	302
5	14	320	366



MOP 06 6 \* E \* \*

多回路选择阀

Stackble circuit selector valve

6 通路 Size NG06

油口的个数 (单个元件)  
No. of way(single element)

螺纹连接 Threaded connection  
G 3/8 SAE 8

电压 Voltage  
DC12;DC24

叠加的元件的个数: 1/2/3/4/5  
QTY of elements:1/2/3/4/5

泄漏油外排  
Externally drainage